

REPORT - 3

October 31st, 2017

Basmati Acreage & Yield Estimation in Punjab, Haryana, Delhi, Uttarakhand,
Himachal Pradesh, Western Uttar Pradesh and Parts of Jammu & Kashmir

Basmati Export Development Foundation
APEDA, New Delhi



Basmati Survey - Report-3 (Season 2017)

This is the 3rd report for Basmati crop across 7 states totalling 81 districts. Detailed microscopic level has been collected and compiled in this report. The report begins with an overview of the entire scenario of Basmati crop for the current season and then goes on to provide details of crop health, harvest pace, mandi arrival, prices trend along with other details like acreage / production block/district/ state wise.

Geotrans Technologies Pvt. Ltd.

Contents

| | |
|---|----|
| Acknowledgement | 3 |
| Chapter 1..... | 4 |
| Executive Summary | 4 |
| State Wise Transplanted Area, Production..... | 6 |
| Haryana..... | 7 |
| Punjab | 8 |
| Uttar Pradesh..... | 9 |
| Uttarakhand..... | 10 |
| Jammu & Kashmir | 10 |
| Himachal Pradesh | 10 |
| State-Mandi wise arrival/prices..... | 11 |
| All India Exports of Basmati Rice from India from (Aug 2016-Sep 2017) | 14 |
| Chapter 2..... | 17 |
| Project Background | 17 |
| Chapter-3 | 21 |
| District Wise Rice & Basmati Details..... | 21 |
| Chapter-4 | 30 |
| Haryana..... | 30 |
| Punjab | 30 |
| Uttar Pradesh..... | 31 |
| Uttarakhand..... | 31 |
| Jammu & Kashmir | 32 |
| Himachal Pradesh | 32 |
| Chapter- 5 | 33 |
| Methodology..... | 46 |
| Way Forward | 46 |
| Data Source | 46 |

Acknowledgement

We are thankful to the Chairman, APEDA, Shri Devendra Kumar Singh Chairman, Mr. A. K. Gupta, Director, Basmati Export Development Foundation (BEDF) for assigning the study and being a force behind the study. We are grateful to Mr. Vijay Setia, President, AIREA and Hon'ble Exporter Members of Basmati Survey Technical Committee of AIREA and Mr. Rajen Sundresan Executive Director, AIREA.

The scientific team of Geotrans is also thankful to the Hon'ble members and representatives of All India Rice Exporters' Association for giving their valuable suggestions from time to time.

TEAM GEOTRANS

Geotrans Technologies Pvt. Ltd.

Executive Summary

Scope of the Report

The present report being the report for Kharif 2017 covers the results of field survey based acreage / production estimation reporting of Basmati varieties area transplanted in the different districts of Punjab, Haryana, Delhi, Uttar Pradesh, Uttarakhand, Himachal Pradesh and Jammu & Kashmir. This time we have focused on basmati crop fields & mandis across states for gathering the details on crop health; pest infestation; harvest pace; mandi arrivals; price trends and farmer expectation on crop selling. As we move further in the harvest season we will give more insights on the realized yields and the clearer picture will immerse on the production/ arrival/ prices of basmati crop. This report primarily covers the crop acreage / production estimates / initial information on prices / harvest pace etc to give glimpses on how basmati crop harvest pace has been happening along with quantity & quality of crop mandi arrivals.

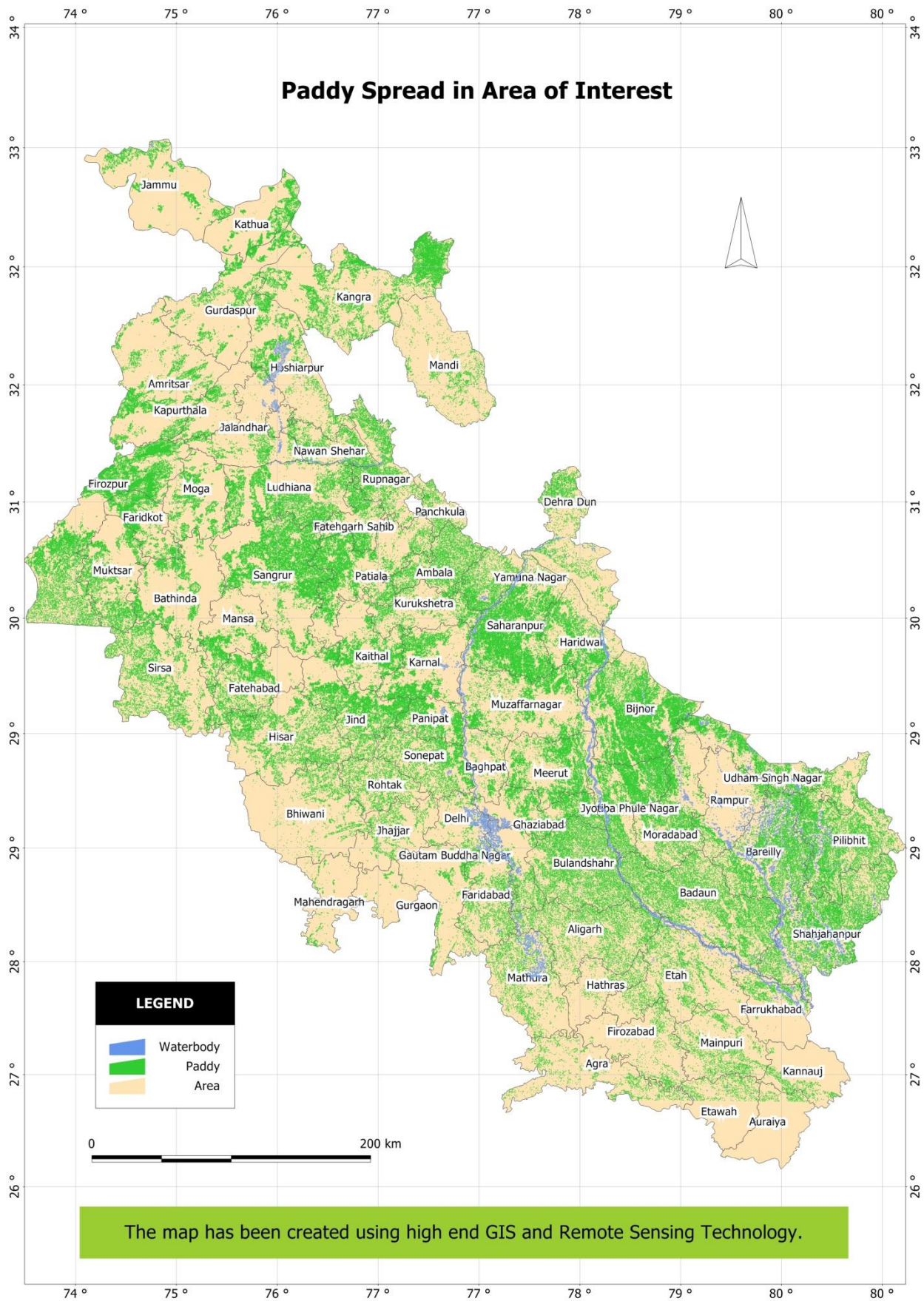
Study districts

The study has been conducted in 79 districts, which includes 22 districts of Punjab, 21 districts of Haryana, 27 districts of Uttar Pradesh, 4 districts of Uttarakhand, 2 districts of Himachal Pradesh and 3 districts of Jammu & Kashmir and findings were elaborated in in form of tables / text and pics

Rice Acreage

This year the total rice transplanted area in India has decreased by 1% i.e. from 38,238,000 ha to 37,910,000 ha in the kharif 2017-18 season. The total rice crop in the studied 7 states & 81 districts has been reduced to 2.28% in the kharif 2017-18 season. Although, the % area occupied by Basmati has reduced in major states of Haryana and Punjab by 9.4% and 8.8% respectively as observed during the field survey estimates, which is further substantiated in third report too from field visits & satellite images. While in U.P. the area under Basmati has increased 9,600 ha. Overall, the Basmati area has decreased by 7.9% in comparison to last year i. e 2016. Whereas, the area under other Long Grain Non-Basmati (Sharbati & Sugandha) rice has increased from 291,300 to 302,000 ha.

In Punjab, the rice transplanting has been 2,926,000 ha in 22 districts this year. Sangrur district has the largest area under rice (2,67,720 ha), followed by Ludhiana district (2,49,200 ha). The area under Basmati variety Pusa Basmati-1121 has reduced this year by 10.1% in comparison to last year. The area under Pusa Basmati-1509 has significantly increased from 35,200 ha. to 38,700 ha in comparison to last year as the farmers got shifted to PB 1509 from PB 1121. Farmers realized yields & higher return on PB 1509 along with shorter duration makes PB 1509 as preferred choice over PB 1121



In Haryana, the total rice acreage based on field survey has been estimated at 12,87,000 ha in 20 districts. Karnal district has the highest transplanted area under rice (1,59,700 ha), followed by Kaithal district (1,57,700ha). Overall Basmati area has reduced by 9.4% in comparison to last year.

In Uttar Pradesh, timely onset of monsoon, rice transplanting was started in time and continued in full sowing during July. A total of 13,42,000 ha. rice acreage based on field survey has been estimated as transplanted in the 27 districts of the state. Shahjahanpur district has the largest total rice area (1,97,051 ha), followed by Pilibhit (1,52,500 ha) and in districts like Muzaffarnagar, Bagpat, Meerut, many farmers have sown sugarcane replacing Basmati speculating higher sugarcane state advised prices from the state Govt and no sugarcane arrears from sugar mills.

In Uttarakhand, A total of 130,000 ha rice acreage has been estimated as transplanted in the 4 districts. Udham Singh Nagar district has the largest area under rice (100,300 ha). This year overall basmati crop has been reduced to 5% across state while in certain major districts basmati acreage has been reduced upto the level of 9%.

In Jammu & Kashmir, three districts have been taken up for the study. The total rice area is estimated to be 139,000 ha. in these districts. Jammu & Samba have an area of 97,000 ha. and Kathua only 42,000 ha. The state has received excess rainfall this year. Area under basmati & rice is almost intact as farmer have lesser choice and variety like Ranbir which pays well to farmers in recent past and has constant demand in market

In Himachal Pradesh, a total of 76,000 ha rice acreage based on field survey has been estimated as transplanted in 11 districts. Basmati is grown in Kangra and Mandi districts only. Kangra district has the highest area (60,000 ha). The farmers opted Permal varieties including PR-123 in the increased paddy area and the area under Pusa-Basmati 1509.

State Wise Transplanted Area, Production

Basmati & Non-Basmati Long Grain Rice Area during Kharif 2017

Total rice transplanting in the studied 7 states has been reduced by 2.28% from last year. Farmers shifted to crops like cotton & sugarcane in Haryana/ Punjab & Western part of Uttar Pradesh. The total Basmati (notified varieties) area in these targeted 7 states & 81 districts has decreased by 7.88%. The notified Basmati varieties majorly comprises of Basmati-370, Basmati- 386, Type-3 (Dehraduni), Taraori, Ranbir, Pusa-1509, Pusa Basmati-1, CSR-30 and Pusa Basmati-1121

This year about 1,32,900 ha area under basmati has been shifted either to non-basmati long grain rice or shifted to other major competitive crops like sugarcane & cotton

This year initial round of farmer interaction and various field visits suggests that this year about 55 - 57 lakh tons of basmati production is expected against 61.53 lakh tons production on last year. The exact figures of basmati production can be assessed once harvesting and crop cutting experiments will be taken in further reports

**State Wise Transplanted Area,
Basmati & Non-Basmati long grain Rice Area/ Production during Kharif 2017 (Area in 000 ha./ production in 000 tons)**

| State | Total Basmati | | Pusa Basmati 1121 | | Pusa 1509 | | PB -1 | | Sharbati | |
|------------------|---------------|------------|-------------------|------------|-----------|------------|-------|------------|----------|------------|
| | Area | Production | Area | Production | Area | Production | Area | Production | Area | Production |
| Haryana | 652 | 2539 | 444 | 1615 | 30 | 148 | 41 | 223 | 6 | 21 |
| Punjab | 563 | 2145 | 500 | 1842 | 40 | 193 | 23 | 110 | 6 | 22 |
| U. P | 257 | 776 | 145 | 412 | 56 | 209 | 43 | 134 | 174 | 529 |
| U.K | 15 | 40 | 4 | 9 | 3 | 10 | 2 | 8 | 15 | 50 |
| J & K | 62 | 132 | 8 | 25 | 0 | 1 | | | 10 | 36 |
| H.P | 7 | 30 | 2 | 7 | 5 | 22 | | | 0 | 0 |
| Delhi | | | | | | | | | | |
| Total | 1555 | 5662 | 1102 | 3911 | 133 | 584 | 110 | 475 | 211 | 658 |

This year initial round of farmer interaction and various mandi visits suggests that harvest has started on time, however harvest pace is little slower than last year. Punjab and Haryana have seen quick harvest pace as compared to UP/ UK , but this is in line with the market expectations.

State Wise harvest pace

Basmati & Non-Basmati Long Grain Rice Area during Kharif 2017 (Area in 000 ha./ production in 000 tons)

| % of harvested area in Basmati & Non-Basmati varieties (as on last week of Oct, 2017) | | | | | |
|--|---------|---------|---------------|-------------|---------|
| State/ Varieties | Punjab | Haryana | Uttar Pradesh | Uttarakhand | J&K |
| Pusa Basmati 1121 | 70%-75% | 65%-70% | 20%-25% | 10%-15% | |
| Pusa Basmati 1509 | 85%-90% | 80%-85% | 25-30% | 15%-20% | |
| Pusa Basmati 1 | 70%-75% | 60%-65% | 20-25% | 10%-15% | |
| Basmati-370/386 | | 55%-60% | | | |
| CSR 30 | | 45%-50% | | | |
| Pusa Basmati-1401 | | 55%-60% | | | |
| Sharbati | 65%-70% | 55%-60% | 25%-30% | 10%-15% | |
| Sugandha | | | 20%-25% | 10%-15% | |
| Ranbir | | | | | 50%-55% |

Haryana

In Haryana, the harvesting of Pusa Basmati- 1509 & Pusa Basmati-1 are being harvested. The production estimates of Pusa Basmati-1509, Pusa Basmati-1, Pusa Basmati-1121 and Sharbati are given in Table below

District Wise Transplanted Area,

**Basmati & Non-Basmati long grain Rice Area/ Production during Kharif 2017 in Haryana
(Area in 000 ha./ production in 000 tons)**

| District | Pusa Basmati 1121 | | Pusa 1509 | | PB -1 | | Sharbati | |
|---------------------------|-------------------|------------|-----------|------------|-------|------------|----------|------------|
| | Area | Production | Area | Production | Area | Production | Area | Production |
| Ambala | 6.2 | 17.3 | 0.1 | 0.6 | 0.2 | 1.1 | 0.1 | 0.4 |
| Bhiwani | 18.7 | 59.7 | 0.0 | | 0.0 | | 0.3 | 0.9 |
| Faridabad + Palwal | 22.1 | 64.6 | 0.2 | 0.9 | 3.2 | 14.0 | 0.3 | 1.1 |
| Gurgaon | 2.0 | 6.0 | 0.0 | | 0.2 | 0.7 | 0.3 | 0.9 |
| Fatehabad | 23.3 | 94.2 | 1.5 | 7.8 | 12.0 | 79.7 | 0.1 | 0.3 |
| Hisar | 36.0 | 141.3 | 0.5 | 2.9 | 0.8 | 4.1 | 0.3 | 0.9 |
| Jajjhar | 37.3 | 121.6 | 1.1 | 4.4 | 0.0 | | 0.3 | 0.9 |
| Jind | 55.3 | 257.3 | 2.2 | 9.4 | 7.4 | 36.0 | 0.3 | 0.9 |

| District | Pusa Basmati 1121 | | Pusa 1509 | | PB -1 | | Sharbati | |
|----------------------|-------------------|---------------|-------------|--------------|-------------|--------------|------------|-------------|
| | Area | Production | Area | Production | Area | Production | Area | Production |
| Kaithal | 34.3 | 127.8 | 3.4 | 17.3 | 0.1 | 0.5 | 0.3 | 0.9 |
| Karnal | 36.5 | 150.4 | 9.9 | 48.8 | 0.2 | 1.1 | 0.1 | 0.4 |
| Kurukshetra | 9.9 | 39.0 | 3.0 | 14.8 | 2.3 | 12.1 | 0.3 | 1.0 |
| Mewat | 6.6 | 22.6 | 0.0 | | 0.0 | | 0.3 | 0.9 |
| MahendraGarh | | | 0.0 | | 0.0 | | 0.3 | 0.9 |
| Panchkula | | | 0.0 | | 0.0 | | 0.3 | 0.9 |
| Panipat | 51.5 | 157.8 | 2.5 | 12.0 | 2.0 | 7.7 | 0.3 | 1.3 |
| Rewari | 1.1 | 3.9 | 0.0 | | 0.0 | | 0.3 | 0.9 |
| Rohtak | 30.7 | 105.4 | 0.1 | | 0.0 | | 1.1 | 3.4 |
| Sirsa | 10.1 | 49.4 | 3.4 | 19.8 | 6.1 | 30.6 | 0.5 | 2.0 |
| Sonepat | 61.0 | 194.3 | 1.4 | 5.7 | 0.0 | | 0.3 | 0.9 |
| Yamunanagar | 0.7 | 2.9 | 0.7 | 3.5 | 6.9 | 35.3 | 0.3 | 0.9 |
| TOTAL HARYANA | 443.5 | 1615.5 | 29.9 | 147.9 | 41.4 | 223.0 | 6.0 | 21.2 |

Crop Stage:

Pusa Basmati-1509, Pusa Basmati-1 & Sharbati harvesting is continued along with Pusa Basmati-1121 harvesting in across districts. Crop Health is good as of now and no major reporting of quality concerns in basmati arrival

Punjab

Crop Stage: 90% Pusa Basmati-1509 is almost done and being marketed @ Rs. 2600-2800 per quintal. No Disease / Pests have been reported but Neck Blast and BPH incidence are observed in few areas but below ETL level and the crop has been very good. The production estimates of Pusa Basmati-1509, Pusa Basmati-1, Pusa Basmati-1121 and Sharbati are given in Table below

District Wise Transplanted Area, Basmati & Non-Basmati long grain Rice Area/ Production during Kharif 2017 in Punjab (Area in 000 ha./ production in 000 tons)

| District | Pusa Basmati 1121 | | Pusa 1509 | | PB -1 | | Sharbati | |
|-----------------|-------------------|------------|-----------|------------|-------|------------|----------|------------|
| | Area | Production | Area | Production | Area | Production | Area | Production |
| Amritsar | 73 | 267 | 31 | 153 | 0 | 0 | 0.4 | 1.4 |
| Barnala | 2 | 7 | 0 | 0 | 0.50 | 2.4 | | 0.0 |
| Bhatinda | 10 | 32 | 0 | 0 | 0 | 0 | | 0.0 |
| Faridkot | 21 | 84 | 0 | 0 | 0 | 0 | | 0.0 |
| Fatehgarh Sahib | 8 | 30 | 0 | 0 | 2 | 9.2 | | 0.0 |
| Fazilka | 67 | 273 | 0 | 0 | 0 | 0 | | 0.0 |
| Firozpur | 48 | 174 | 0 | 0 | 0 | 0 | | 0.0 |
| Gurdaspur | 42 | 152 | 0 | 0 | 0 | 0 | 3.6 | 13.9 |
| Pathankot | 3 | 8 | 0 | 0 | 0 | 0 | 1.9 | 7.1 |
| Hoshiarpur | 7 | 25 | 0 | 0 | 0 | 0 | | 0.0 |
| Jalandhar | 10 | 36 | 1 | 0 | 0 | 0 | | 0.0 |
| Kapurthala | 8 | 27 | 0 | 0 | 0 | 0 | | 0.0 |
| Ludhiana | 17 | 64 | 2 | 11 | 3.2 | 14.3 | | 0.0 |
| Mansa | 1 | 3 | 0 | 0 | 0 | 0 | | 0.0 |
| Moga | 18 | 45 | 0 | 0 | 0.1 | 0.57 | | 0.0 |
| Mohali | 4 | 12 | 0 | 0 | 0 | 0 | | 0.0 |
| Muktsar | 42 | 150 | 0 | 0 | 8.3 | 39.9 | | 0.0 |

| District | Pusa Basmati 1121 | | Pusa 1509 | | PB -1 | | Sharbati | |
|--------------|-------------------|-------------|-----------|------------|-----------|--------------|------------|-------------|
| | Area | Production | Area | Production | Area | Production | Area | Production |
| Nawanshahar | 5 | 16 | 0 | 1 | 0 | 0 | | 0.0 |
| Patiala | 16 | 63 | 1 | 5 | 2.6 | 12.6 | | 0.0 |
| Rupnagar | 3 | 10 | 0 | 0 | 0 | 0 | | 0.0 |
| Sangrur | 26 | 97 | 0 | 0 | 6.4 | 31.1 | | 0.0 |
| Tarantaran | 72 | 266 | 3 | 18 | 0 | 0 | | 0.0 |
| Total | 500 | 1842 | 40 | 193 | 23 | 110.2 | 5.9 | 22.2 |

Uttar Pradesh

Pusa Basmati-1121 harvesting has just started. Almost 30-35% Pusa Basmati-1509 has been harvested. Harvesting has reached at full swing in the state in couple of weeks. BPH, Node blast and neck blast have been observed but not severely affecting the crop of Pusa Basmati-1 & 6 and Pusa Basmati-1121. The production estimates of Pusa Basmati-1509, Pusa Basmati-1, Pusa Basmati-1121 and Sharbati are given in Table below

**District Wise Transplanted Area,
Basmati & Non-Basmati long grain Rice Area/ Production during Kharif 2017 in U.P
(Area in 000 ha./ production in 000 tons)**

| District | Pusa Basmati 1121 | | Pusa 1509 | | PB -1 & 6 | | Sharbati | |
|----------------------|-------------------|--------------|-------------|--------------|-------------|--------------|--------------|--------------|
| | Area | Production | Area | Production | Area | Production | Area | Production |
| Agra | 0.3 | 0.8 | 0.5 | 1.8 | 0.1 | 0.2 | | |
| Aligarh | 16.9 | 46.3 | 4.3 | 18.3 | 4.8 | 13.4 | 2.5 | 8.5 |
| Auraiya | 1.0 | 2.6 | 0.2 | 0.5 | 0.0 | 0.2 | 1.8 | 5.0 |
| Baghpat | 1.9 | 5.5 | 0.5 | 2.1 | 1.2 | 3.5 | 0.2 | 0.8 |
| Bareilly | 1.2 | 3.2 | 0.7 | 2.3 | 0.5 | 1.3 | 46.4 | 134.5 |
| Bijnore | 1.5 | 3.5 | 2.3 | 7.9 | 3.1 | 9.1 | 18.1 | 56.3 |
| Budaun | 1.9 | 4.9 | 2.1 | 6.1 | 0.7 | 2.2 | 20.8 | 63.0 |
| Bulandshahr | 19.1 | 54.6 | 4.5 | 18.7 | 5.8 | 19.5 | 4.5 | 15.5 |
| Etah+Kasganj | 4.9 | 11.9 | 3.1 | 10.1 | 0.5 | 1.5 | 0.9 | 2.5 |
| Farukhabad | 1.7 | 4.6 | 0.9 | 2.5 | 0.1 | 0.2 | 0.1 | 0.4 |
| Firozabad | 2.3 | 6.0 | 1.3 | 4.9 | 0.2 | 0.7 | 0.1 | 0.3 |
| Etawah | 6.2 | 17.8 | 2.6 | 8.8 | 0.2 | 0.5 | 0.1 | 0.2 |
| Gautam Buddha Nagar | 17.7 | 52.9 | 0.8 | 3.3 | 1.8 | 6.0 | 1.4 | 4.8 |
| Ghaziabad+Hapur | 5.4 | 17.9 | 2.9 | 12.8 | 1.4 | 4.7 | 3.1 | 9.0 |
| Hathras | 3.9 | 11.3 | 2.4 | 8.1 | 0.8 | 2.6 | 0.7 | 2.1 |
| Mathura | 22.8 | 69.5 | 3.4 | 12.9 | 1.0 | 3.4 | 0.3 | 1.0 |
| Mainpuri | 15.5 | 41.7 | 2.5 | 7.8 | 0.2 | 0.7 | 0.2 | 0.5 |
| Meerut | 2.2 | 5.9 | 2.5 | 10.2 | 2.3 | 7.5 | 0.6 | 2.0 |
| Moradabad | 0.9 | 2.8 | 2.2 | 8.0 | 0.3 | 1.0 | 9.3 | 31.0 |
| J. P. Nagar | 1.2 | 3.0 | 2.0 | 7.1 | 1.0 | 2.9 | 7.2 | 23.4 |
| Kannauj | 0.6 | 1.6 | 1.4 | 4.3 | 0.2 | 0.4 | 0.1 | 0.4 |
| Muzaffarnagar+Shamli | 4.25 | 11.5 | 2.5 | 10.5 | 3.9 | 12.8 | 1.3 | 3.6 |
| Pilibhit | 0.83 | 2.5 | 3.4 | 13.2 | 0.2 | 0.5 | 5.4 | 16.6 |
| Rampur | 0.65 | 1.9 | 1.2 | 4.5 | 0.1 | 0.5 | 24.0 | 71.3 |
| Saharanpur | 6.94 | 19.5 | 3.3 | 12.6 | 11.9 | 37.1 | 7.5 | 22.2 |
| Shahjehanpur | 1.53 | 4.4 | 0.8 | 3.2 | 0.3 | 0.8 | 8.7 | 29.1 |
| Sambhal | 1.44 | 3.7 | 1.7 | 6.6 | 0.4 | 1.3 | 8.5 | 25.2 |
| Total | 145 | 411.9 | 56.0 | 209.1 | 42.8 | 134.4 | 173.6 | 529.1 |

Uttarakhand

Harvest activity has been just started and it is as per the market expectation. The production estimates of Pusa Basmati-1509, Pusa Basmati-1, Pusa Basmati-1121 and Sharbati are given in Table below

**District Wise Transplanted Area,
Basmati & Non-Basmati long grain Rice Area/ Production during Kharif 2017 in U.K**
(Area in 000 ha./ production in 000 tons)

| District | Pusa Basmati 1121 | | Pusa 1509 | | PB -1 | | Sharbati | |
|--------------|-------------------|-------------|------------|-------------|-------------|-------------|-------------|-------------|
| | Area | Production | Area | Production | Area | Production | Area | Production |
| Dehradun | 0.33 | 0.80 | 0.2 | 0.7 | | | 2.5 | 7.5 |
| Haridwar | 1.41 | 3.97 | 0.5 | 2.3 | 2.2 | 7.3 | 3.6 | 13.4 |
| Nainital | 0.28 | 0.74 | 0.3 | 0.9 | | | 1.4 | 4.7 |
| U S Nagar | 1.52 | 3.80 | 1.5 | 6.3 | 0.1 | 0.36 | 7.5 | 24.2 |
| Total | 3.54 | 9.31 | 2.5 | 10.2 | 2.27 | 7.70 | 15.0 | 49.7 |

Jammu & Kashmir

Harvest activity in Ranbir is half way complete. The production estimates of Pusa Basmati-1509, Pusa Basmati-1, Pusa Basmati-1121 and Sharbati are given in Table below

**District Wise Transplanted Area,
Basmati & Non-Basmati long grain Rice Area/ Production during Kharif 2017 in J & K**
(Area in 000 ha./ production in 000 tons)

| District | Pusa Basmati 1121 | | Pusa 1509 | | Sharbati | |
|--------------|-------------------|-------------|------------|------------|-------------|-------------|
| | Area | Production | Area | Production | Area | Production |
| Jammu | 1.4 | 4.4 | 0 | 0 | 9.1 | 32.3 |
| Kathua | 6.3 | 20.6 | 0.2 | 0.8 | 0.7 | 2.6 |
| Samba | 0.6 | 0.2 | 0.1 | 0.3 | 0.3 | 1.0 |
| Total | 8.2 | 25.1 | 0.3 | 1.1 | 10.1 | 35.9 |

Himachal Pradesh

The district-wise target for total rice in Himachal Pradesh during Kharif-2016 is given Table-8.

**District Wise Transplanted Area,
Basmati & Non-Basmati long grain Rice Area/ Production during Kharif 2017 in H.P**
(Area in 000 ha./ production in 000 tons)

| District | Pusa Basmati 1121 | | Pusa 1509 | |
|--------------|-------------------|-------------|------------|------------|
| | Area | Production | Area | Production |
| Kangra* | 1.92 | 7.22 | 1.0 | 4.5 |
| Mandi* | | | 4.1 | 4.4 |
| Total | 1.92 | 7.22 | 5.1 | 4.4 |

State-Mandi wise arrival/prices

Basmati & Non-Basmati Long Grain Rice Area during Kharif 2017

Basmati 1121 Arrival & Prices Haryana

| APMC | 01/09/2017-30/10/2017 | 30-Oct | 22-Oct | 16-Oct | 10-Oct |
|---------------|-----------------------|---------------------|--------|--------|--------|
| | Arrivals(Quintal) | Price (per Quintal) | | | |
| AMBALA | 99841 | 3250 | 2461 | 2461 | 2461 |
| BARWALA HISAR | 77485 | 3321 | | | |
| CHEEKA | 13289.76 | 2875 | 2700 | 2700 | 2700 |
| DHAND | 3805 | | | | |
| FATEHABAD | 43702.5 | | | | |
| GANAUR | 345529.3 | 3061 | 3251 | 3251 | 2951 |
| GHARAUNDA | 396277.25 | 2500 | 2500 | 2500 | 2500 |
| GOHANA | 1886672.19 | 3161 | 3351 | 3351 | 3351 |
| HANSI | 466610 | 2981 | 2931 | 2931 | 2931 |
| HODAL | 2042 | | | | |
| INDRI | 65252.5 | | | | |
| ISMAILABAD | 104280.58 | 3200 | | | |
| JAKHAL | 3379.13 | | | | |
| JIND | 828239.05 | 3225 | 3020 | 3020 | 3020 |
| JULLANA | 849832 | 3300 | 3291 | 3280 | 3295 |
| KALAYAT | 61000.5 | 2800 | 3050 | 3050 | 3050 |
| KARNAL | 253311.5 | 3160 | 3050 | 3050 | 3150 |
| LADWA | 74693 | 3105 | 2910 | 2910 | 2910 |
| MADLAUDA | 809646.25 | 3301 | 3156 | 3156 | 3156 |
| NARNAUND | 42765.13 | 3121 | 3025 | 3025 | 3025 |
| NARWANA | 381174.15 | 3015 | 3140 | 3140 | 3140 |
| NISSING | 293268.9 | 2400 | | | |
| PALWAL | 24641 | | | | |
| PANIPAT | 643262.81 | 3181 | 3200 | 3200 | 3200 |
| PEHOWA | 101439.4 | | | | |
| PILLUKHERA | 64118 | 3041 | 3340 | 3340 | 3340 |
| PUNDRI | 107525.38 | 3100 | 2575 | 2575 | 2575 |
| RANIA | 10584 | 2681 | | | |
| RATIA | 60205.89 | 2900 | 2786 | 2786 | 2786 |
| REWARI | 56911.5 | 2755 | 2831 | 2831 | 2831 |
| ROHTAK | 427880.95 | 3201 | | | |
| SAFIDON | 593444.79 | 3245 | 2963 | 3284 | 3284 |
| SAMALKHA | 864597.21 | 3071 | 3261 | 3261 | 3261 |
| SHAHBAD | 23134 | 2500 | | | |
| SIRSA | 11974 | 2700 | 2700 | 2700 | 2700 |
| SONEPAT | 457370.42 | 3101 | 3101 | 3101 | 3101 |
| TARAORI | 120571.75 | 3350 | 2741 | 2741 | 2741 |
| THANESAR | 31808.04 | 2325 | 2325 | 2325 | 2325 |
| TOHANA | 581907.48 | 2525 | 2525 | 2525 | 2525 |
| UCHANA | 31691 | 3005 | 2761 | 2761 | 2761 |

Basmati 1509 Arrival & Prices Haryana

| APMC | 01/09/2017-30/10/2017 | 30-Oct | 22-Oct | 16-Oct | 10-Oct |
|---------------|-----------------------|---------------------|--------|--------|--------|
| | Arrivals(Quintal) | Price (per Quintal) | | | |
| AMBALA | 4248.75 | 2611 | 2341 | 2341 | 2341 |
| ASANDH | 35639.55 | 2770 | 2675 | 2675 | 2675 |
| BARWALA HISAR | 14856.88 | 2691 | 2691 | 2691 | 2691 |
| CHEEKA | 90956.13 | 2800 | 2931 | 2931 | 2931 |
| DHAND | 19533.75 | 2641 | 2641 | 2641 | 2641 |
| ELLANABAD | 44338.5 | 2681 | 2626 | 2626 | 2626 |
| FATEHABAD | 39196 | 2539 | 2921 | 2921 | 2921 |
| GANAUR | 125287.75 | 2861 | 2771 | 2771 | 2771 |
| GHARAUNDA | 351204.15 | 2181 | 2641 | 2641 | 2641 |
| GOHANA | 205081.01 | 3251 | 2921 | 2921 | 2921 |
| HANSI | 60300 | 2773 | 2731 | 2700 | 2661 |
| HODAL | 2706 | | | | |
| INDRI | 179178 | 2035 | 2281 | 2281 | 2281 |
| ISMAILABAD | 25134.9 | 3001 | 2361 | 2361 | 2361 |
| JAKHAL | 6478 | 2800 | 2800 | 2800 | 2800 |
| JIND | 61144.33 | 2900 | 2905 | 2905 | 2905 |
| JULLANA | 44139 | 2731 | 2701 | 2851 | 2821 |
| KAITHAL | 80094.9 | 2630 | 2311 | 2311 | 2311 |
| KALAYAT | 24589.6 | 2621 | 2610 | 2610 | 2610 |
| KARNAL | 424214.6 | 3050 | 3150 | 2660 | 2600 |
| LADWA | 110835 | 2640 | 2675 | 2675 | 2675 |
| MADLAUDA | 68029.3 | 2975 | 3050 | 3050 | 3050 |
| NARNAUND | 5243 | 2650 | 2900 | 2800 | 2800 |
| NARWANA | 21315.25 | 2800 | 2701 | 2701 | 2701 |
| NISSING | 149838 | 2574 | 2574 | 2574 | 2574 |
| PALWAL | 28010 | | | | |
| PANIPAT | 184576 | 2851 | 3321 | 3321 | 2671 |
| PEHOWA | 47677 | 2265 | 2265 | 2265 | 2265 |
| PILLUKHERA | 51358.75 | 2811 | 2871 | 2871 | 2871 |
| PUNDRI | 85686.39 | 2845 | 2681 | 2681 | 2681 |
| RANIA | 67446.5 | 2765 | 2495 | 2461 | 2585 |
| RATIA | 12736.58 | 2351 | 2671 | 2671 | 2671 |
| REWARI | 1680 | 3151 | 2692 | 2692 | 2692 |
| ROHTAK | 27220 | 2701 | 2751 | 2751 | 2751 |
| SAFIDON | 118207.1 | 2527 | 2963 | 2963 | 2963 |
| SAMALKHA | 259052.39 | 2891 | 2575 | 2575 | 2575 |
| SHAHBAD | 16903.88 | | | | |
| SIRSA | 130112.1 | 2735 | 2700 | 2700 | 2700 |
| SONEPAT | 100055.82 | 2651 | 2811 | 2811 | 2811 |
| TARAORI | 230616.3 | 2400 | 2651 | 2651 | 2651 |
| THANESAR | 90714.28 | 2545 | 2545 | 2545 | 2545 |
| TOHANA | 247624.54 | 2761 | 2761 | 2761 | 2761 |
| UCHANA | 11373.98 | 2499 | 2840 | 2840 | 2840 |

Basmati 1509 Arrival & Prices U.P

| APMC | 01/09/2017-30/10/2017 | 30-Oct | 22-Oct | 16-Oct | 10-Oct |
|-----------------|-----------------------|---------------------|--------|--------|--------|
| | Arrivals(Quintal) | Price (per Quintal) | | | |
| ALIGARH | 560 | 2300 | 2300 | 2300 | 2300 |
| DADRI UP | 127 | 2650 | 2651 | 2651 | 2651 |
| ETAWAH | 35 | 2250 | 2250 | 2250 | 2250 |
| KHAIR | 12179 | 2721 | 2700 | 2700 | 2700 |
| MAINPURI | 33339 | 2300 | 2200 | 2200 | 2200 |
| MATHURA | 15 | 2501 | 2501 | 2501 | 2501 |
| MILAK | 24 | | | | |
| RAMPUR BILASPUR | 2595 | 2212 | 2425 | 2425 | 2425 |
| SAHARANPUR | 7040 | 2925 | 2720 | 2720 | 2720 |

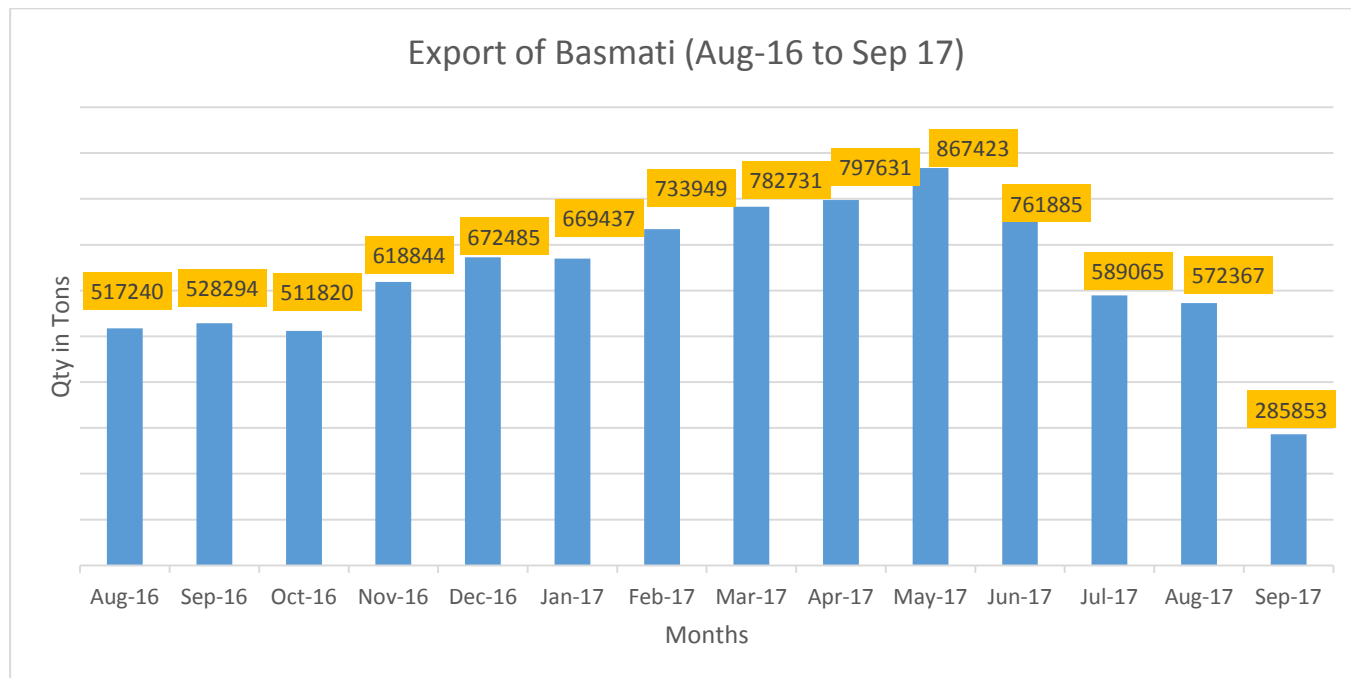
Basmati 1121 Arrival & Prices U.P

| APMC | 01/09/2017-30/10/2017 | 30-Oct | 22-Oct | 16-Oct | 10-Oct |
|-----------------|-----------------------|---------------------|--------|--------|--------|
| | Arrivals(Quintal) | Price (per Quintal) | | | |
| ETAWAH | 47 | 2661 | 2661 | 2661 | 2661 |
| KOSIKALAN | 84 | | | | |
| MATHURA | 331 | 2300 | 2300 | 2300 | 2300 |
| MILAK | 62.4 | | | | |
| RAMPUR BILASPUR | 2883.6 | | | | |
| SAHARANPUR | 3572 | 2800 | | | |

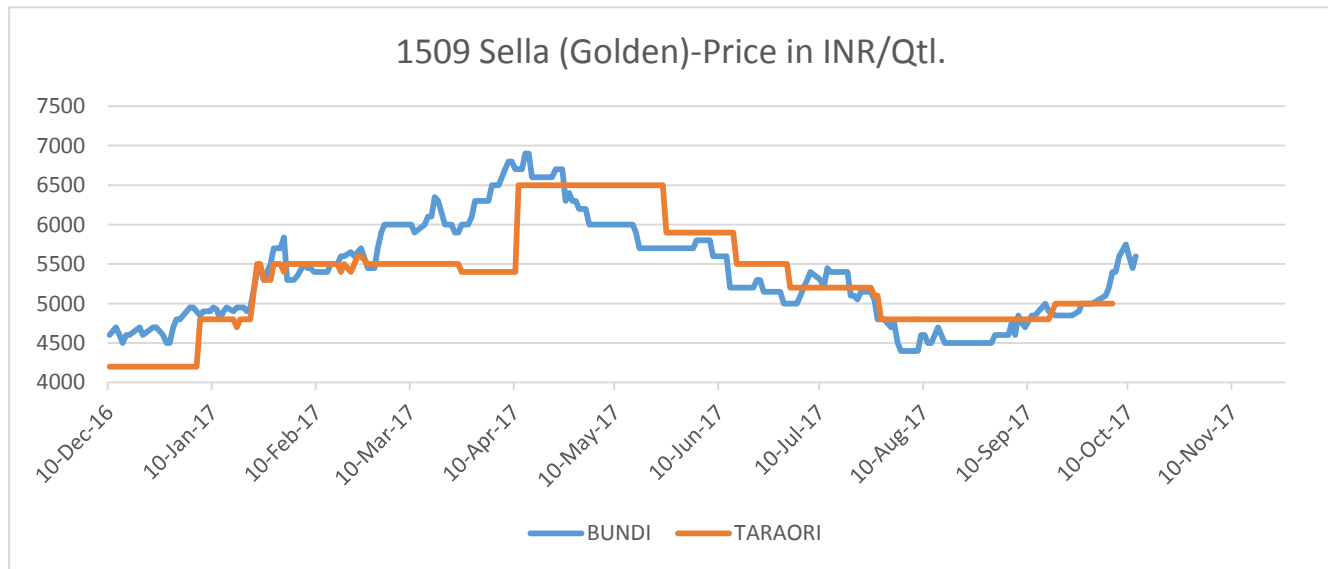
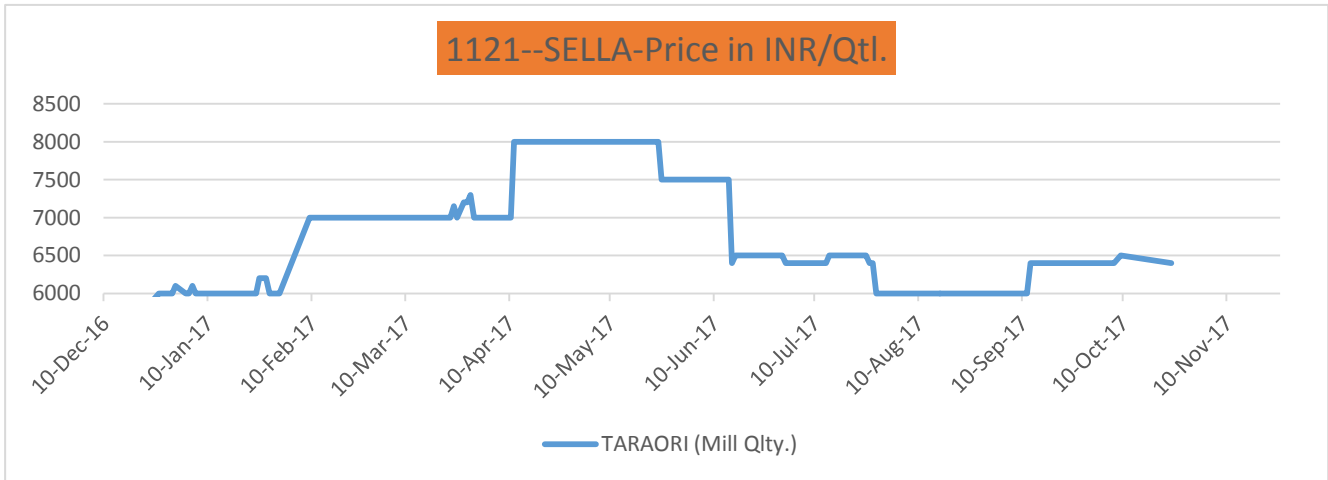
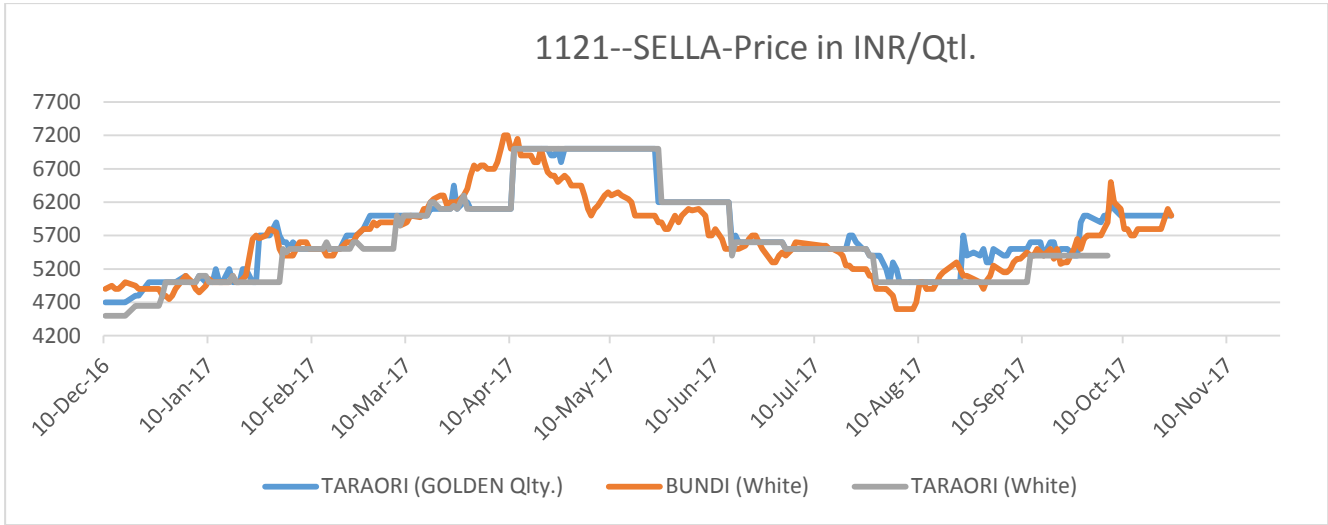
All India Exports of Basmati Rice from India from (Aug 2016-Sep 2017)

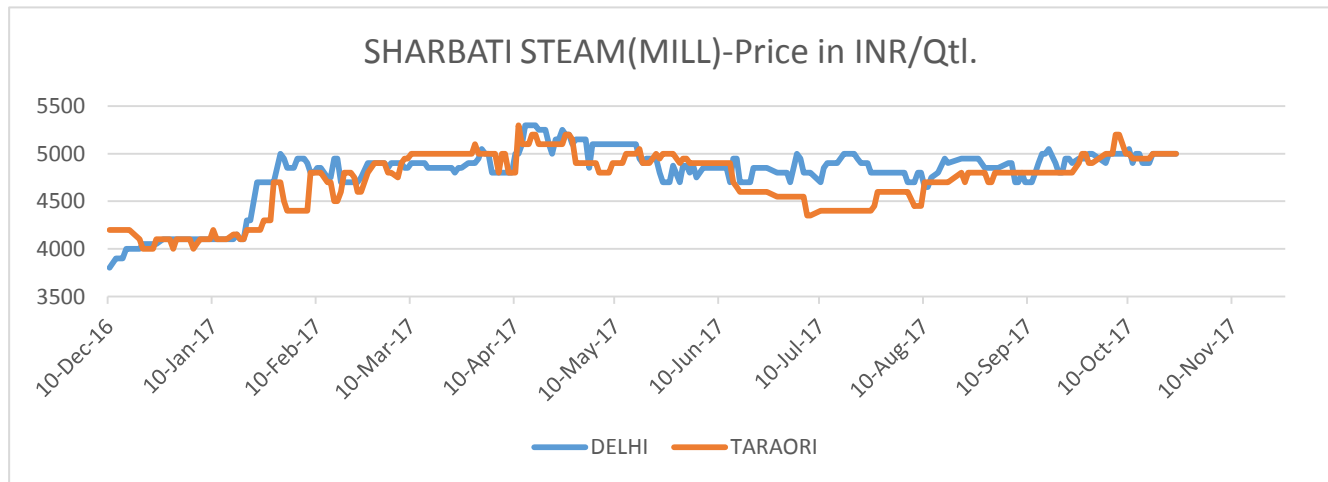
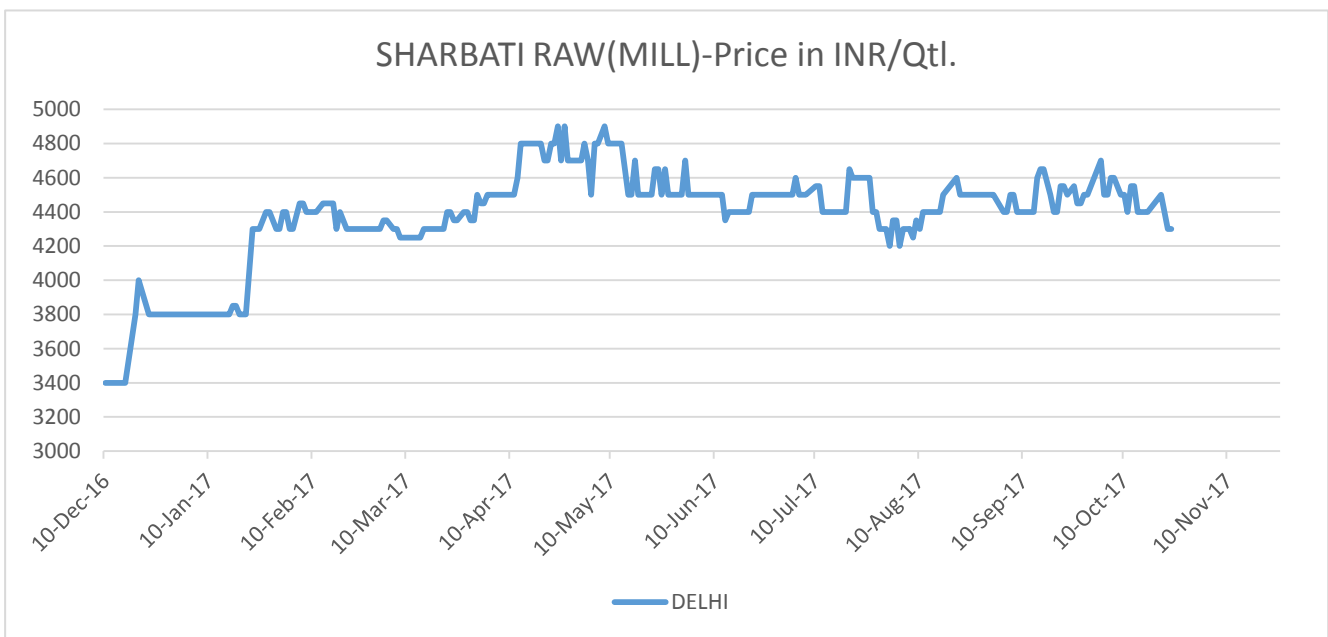
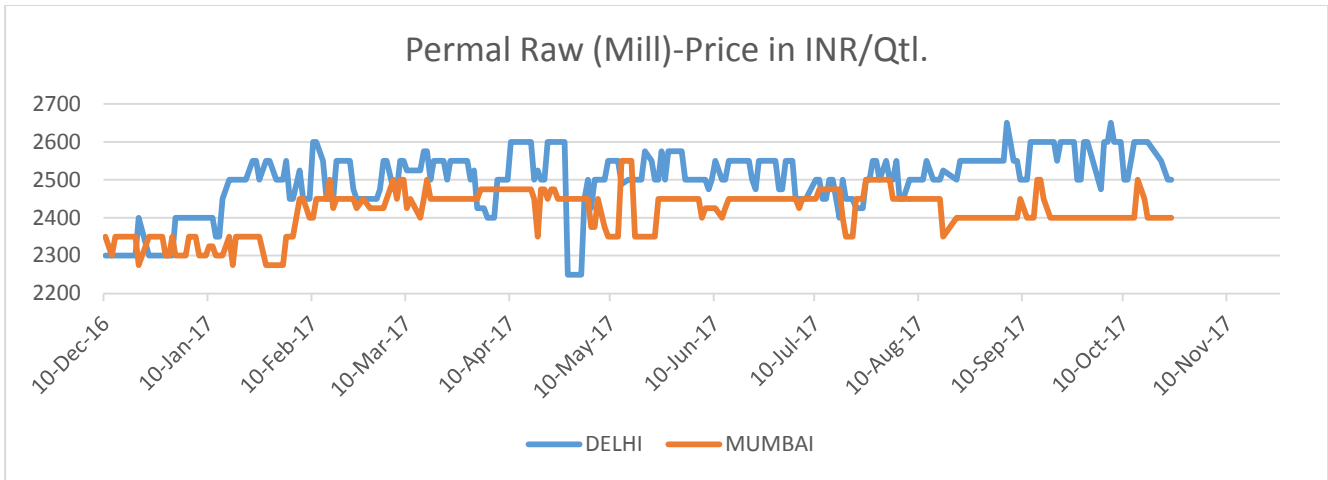
| Period Desc. | Fig In Tons |
|--------------|-------------|
| Aug-16 | 5,17,240 |
| Sep-16 | 5,28,294 |
| Oct-16 | 5,11,820 |
| Nov-16 | 6,18,844 |
| Dec-16 | 6,72,485 |
| Jan-17 | 6,69,437 |
| Feb-17 | 7,33,949 |
| Mar-17 | 7,82,731 |
| Apr-17 | 7,97,631 |
| May-17 | 8,67,423 |
| Jun-17 | 7,61,885 |
| Jul-17 | 5,89,065 |
| Aug-17 | 5,72,367 |
| Sep-17 | 2,85,853 |

Source: DGCIS



All India Rice price trends in major markets

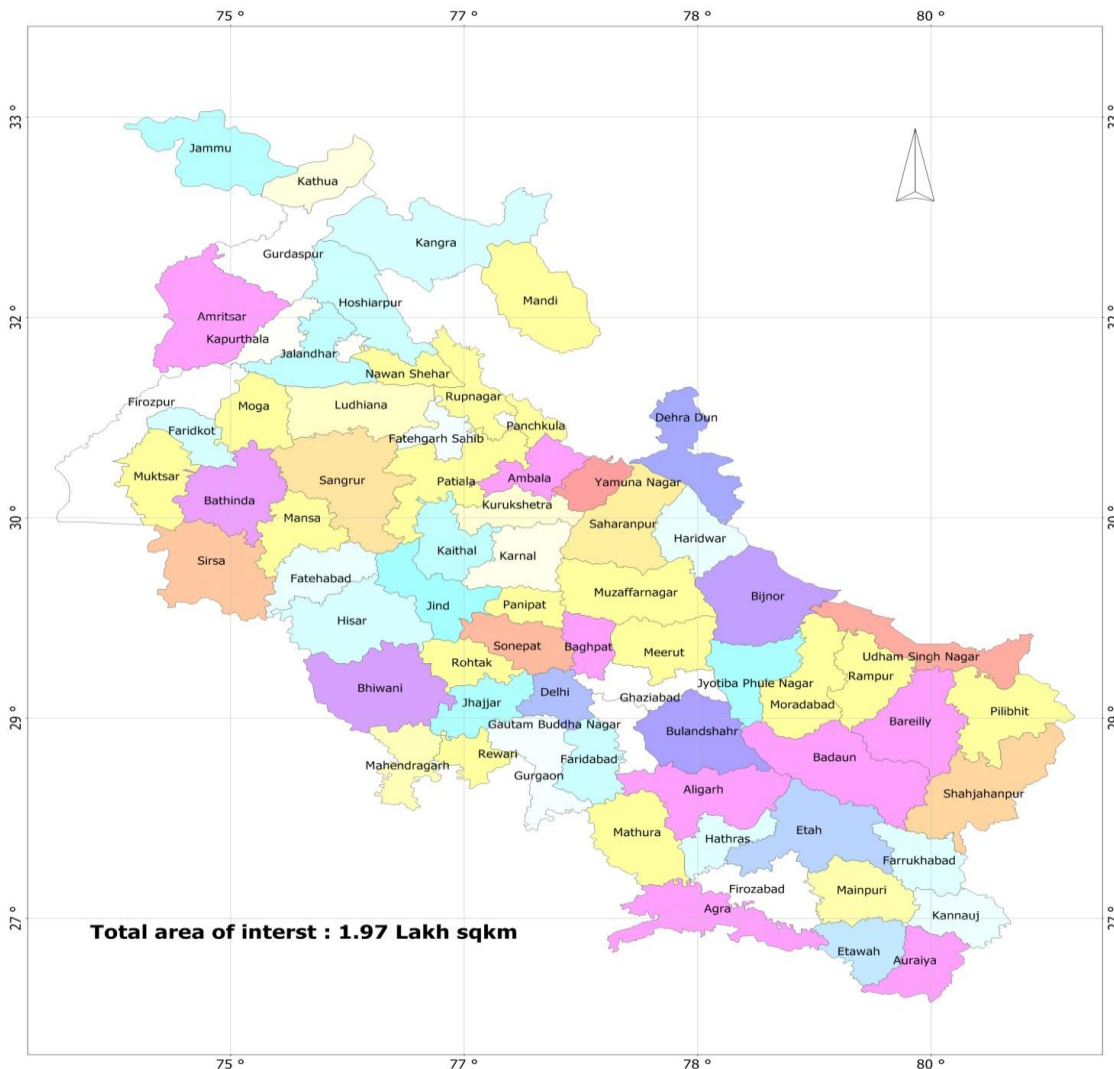




Chapter 2

Project Background

Timely information on the area and likely production of the crop before the harvest helps exporters and other decision makers involved in Basmati trade to take decisions about the quantum and time of export. Realizing this potential, the Basmati Export Development Foundation (BEDF), New Delhi contracted M/s Geotrans Technologies Pvt. Ltd to undertake field survey work for acreage estimation for all rice, for Basmati crop for selected other non-notified varieties), crop health monitoring and yield estimation and production for Basmati rice and non-notified varieties and questionnaire based sample survey of farmers, for 88 districts in the selected seven states i.e. Punjab, Haryana, Uttar Pradesh, Uttarakhand, Himachal Pradesh, and Jammu & Kashmir apart from Delhi. The field survey based approach has been being applied to collect the information at block level to improve the accuracy further to a desired level. The Basmati varieties for which information is required include Basmati-370, Basmati- 386, Type-3 (Dehraduni), Taraori, Ranbir), Pusa-1509, Pusa Basmati-1, CSR-30 and Pusa Basmati-1121 and non-notified, non- Basmati (Sharbati, and Permal).



Study Area Details

The study is confined to 79 districts, which includes 22 districts of Punjab (Amritsar, Barnala, Bathinda, Faridkot, Fatehgarh, Sahib, Firozpur, Fazilka, Gurdaspur, Pathankot, Hoshiarpur, Jalandhar, Kapurthala, Ludhiana, Mansa, Moga, Mohali, Muktsar, Nawanshahr, Patiala, Ropar, Sangrur and Tarantaran), 21 districts of Haryana (Ambala, Faridabad, Bhiwani, Fatehabad, Gurgaon, Hissar, Jhajjar, Jind, Kaithal, Karnal, Kurukshetra, MahendraGarh, Mewat, Palwal, Panchkula, Panipat, Rewari, Rohtak, Sirsa, Sonapat, Yamunanagar), 3 Districts of Jammu & Kashmir (Jammu, Samba and Kathua), 27 districts of Uttar Pradesh (Agra, Aligarh, Auraiya, Baghpat, Bareilly, Bijnore, Budaun, Bulandshahr, Etah, Kasganj, Etawah, Ferozabad, Gautam Buddha Nagar, Ghaziabad, Hapur, Hathras, J. P. Nagar, Kannauj, Mainpuri, Mathura, Meerut, Moradabad, Sambhal, Muzaffarnagar, Shamli, Pilibhit, Rampur, Saharanpur, Shahjehanpur), 4 districts of Uttarakhand, 2 district of Himachal Pradesh and one of Delhi.

Districts of Study Area

State Wise Transplanted Area, Basmati & Non-Basmati Long Grain Rice Area during Kharif 2017 (in 000ha)

| S. No | State | Total Basmati | Pusa-1121 | PB-1 | Pusa-1509 | Pusa-1401 | Basmati 370 | CSR-30 | Type-3 & Others | Non-Notified | |
|--------------|------------------|---------------|---------------|--------------|--------------|-------------|-------------|-------------|-----------------|--------------|-------------|
| | | | | | | | | | | Sharbati | Sugandha |
| 1 | Haryana | 652.0 | 444.0 | 42.0 | 30.0 | 44.0 | | 93.0 | | 6.0 | |
| 2 | Punjab | 561.0 | 500.0 | 23.0 | 39.0 | | | | | 5.9 | |
| 3 | Uttar Pradesh | 257.0 | 145.0 | 43.0 | 56.0 | | | | 13.0 | 173.6 | 91.7 |
| 4 | Uttarakhand | 15.0 | 4.0 | 2.0 | 3.0 | | | | 6.0 | 15.0 | 0.5 |
| 5 | Jammu & Kashmir | 62.0 | 8.0 | | | | 53.0 | | | 10.1 | |
| 6 | Himachal Pradesh | 7.0 | 2.0 | | 5.0 | | | | | 0.0 | |
| 7 | Delhi | | | | | | | | | | |
| Total | | 1553.0 | 1102.0 | 110.0 | 132.0 | 44.0 | 53.0 | 93.0 | 19.0 | 210.6 | 92.2 |

State Wise initial estimated production of Basmati & Non-Basmati long grain Rice during Kharif 2017 (production in 000 ton)

| S. No | State | Total Basmati | Pusa-1121 | PB-1 | Pusa-1509 | Pusa-1401 | Basmati 370 | CSR-30 | Type-3 & Others | Non-Notified | |
|--------------|------------------|---------------|---------------|--------------|--------------|--------------|--------------|--------------|-----------------|--------------|--------------|
| | | | | | | | | | | Sharbati | Sugandha |
| 1 | Haryana | 2539.0 | 1615.0 | 223.0 | 148.0 | 273.0 | | 279.0 | | 21.2 | |
| 2 | Punjab | 2139.0 | 1840.0 | 110.0 | 189.0 | | | | | 22.2 | |
| 3 | Uttar Pradesh | 776.0 | 412.0 | 134.0 | 209.0 | | | | 21.0 | 529.1 | 308.8 |
| 4 | Uttarakhand | 40.0 | 9.0 | 8.0 | 10.0 | | | | 12.0 | 49.7 | 1.9 |
| 5 | Jammu & Kashmir | 132.0 | 25.0 | | 1.0 | | 106.0 | | | 35.9 | |
| 6 | Himachal Pradesh | 30.0 | 7.0 | | 22.0 | | | | | 0.0 | |
| Total | | 5656.0 | 3909.0 | 475.0 | 580.0 | 273.0 | 106.0 | 279.0 | 33.0 | 658.2 | 310.7 |

State wise Variety wise

Basmati Acreages (000 ha.) & Production (000 tons) of basmati rice basis initial estimations

| S. No | State | Area (in 000 Ha.) | | | |
|--------------|------------------|---------------------|--------|---------------------------|--------|
| | | 2016 | 2017 | 2016 | 2017* |
| | | Basmati Area | | Basmati Production | |
| 1 | Haryana | 720.1 | 652.2 | 2796.6 | 2538.8 |
| 2 | Punjab | 615.3 | 562.97 | 2335.6 | 2139.3 |
| 3 | Uttar Pradesh | 266.2 | 256.5 | 816.5 | 776.5 |
| 4 | Uttarakhans | 15.6 | 14.8 | 41.8 | 39.5 |
| 5 | J & K | 62.3 | 61.5 | 133.8 | 132.2 |
| 6 | Himachal Pradesh | 7.0 | 7.0 | 29.7 | 29.5 |
| Total | | 1686.4 | 1553.5 | 6153.9 | 5655.8 |

State wise Acreages (000 ha.) & Production (000 tons) of Pusa-basmati 1121

| S. No | State | Area (in 000 Ha.) | | | |
|-------|------------------|---------------------|--------|---------------------------|--------|
| | | 2016 | 2017 | 2016 | 2017* |
| | | Basmati Area | | Basmati Production | |
| 1 | Haryana | 504.9 | 443.32 | 1842.1 | 1615.5 |
| 2 | Punjab | 555.8 | 500.06 | 2047.6 | 1840.3 |
| 3 | Uttar Pradesh | 156.3 | 144.9 | 451.7 | 411.9 |
| 4 | Uttarakhans | 4.2 | 3.5 | 11.3 | 9.3 |
| 5 | J & K | 8.4 | 8.2 | 25.7 | 25.1 |
| 6 | Himachal Pradesh | 2.0 | 1.9 | 7.6 | 7.2 |
| 7 | Delhi | | | | |
| | Total | 1231.5 | 1101.6 | 4386.0 | 3909.3 |

State wise Acreages (000 ha.) & Production (000 tons) of Pusa-basmati 1509

| S. No | State | Area (in 000 Ha.) | | | |
|-------|------------------|---------------------|-------|---------------------------|-------|
| | | 2016 | 2017 | 2016 | 2017* |
| | | Basmati Area | | Basmati Production | |
| 1 | Haryana | 26.2 | 30 | 130.1 | 147.9 |
| 2 | Punjab | 35.2 | 39.5 | 171.9 | 188.9 |
| 3 | Uttar Pradesh | 53.7 | 56.0 | 204.1 | 209.1 |
| 4 | Uttarakhans | 2.5 | 2.5 | 10.1 | 10.2 |
| 5 | J & K | 0.3 | 0.3 | 1.1 | 1.1 |
| 6 | Himachal Pradesh | 5.0 | 5.1 | 22.1 | 22.3 |
| 7 | Delhi | | | | |
| | Total | 122.8 | 132.4 | 539.4 | 579.5 |

State wise Acreages (000 ha.) & Production (000 tons) of Pusa-basmati 1

| S. No | State | Area (in 000 Ha.) | | | |
|-------|---------------|---------------------|-------|---------------------------|-------|
| | | 2016 | 2017 | 2016 | 2017* |
| | | Basmati Area | | Basmati Production | |
| 1 | Haryana | 44.3 | 41.4 | 239.6 | 223.0 |
| 2 | Punjab | 24.3 | 23.05 | 116.1 | 110.1 |
| 3 | Uttar Pradesh | 43.3 | 42.8 | 139.1 | 134.4 |
| 4 | Uttarakhans | 2.3 | 2.3 | 8.0 | 7.7 |
| | Total | 114.2 | 109.7 | 502.7 | 475.2 |

State wise Acreages (000 ha.) & Production (000 tons) of Long Grain Non-Basmati(Sharbati)

| S. No | State | 2016 | | 2017 | | 2016 | | 2017* | |
|-------|---------------|---------------|---------------|---------------------|---------------|------|--|-------|--|
| | | Sharbati Area | | Sharbati Production | | | | | |
| 1 | Haryana | 5.75 | 6.03 | 20.47 | 21.25 | | | | |
| 2 | Punjab | 5.75 | 5.90 | 21.82 | 22.16 | | | | |
| 3 | Uttar Pradesh | 163.92 | 173.56 | 509.75 | 529.13 | | | | |
| 4 | Uttarakhans | 14.57 | 14.97 | 49.20 | 49.73 | | | | |
| 5 | J & K | 9.95 | 10.15 | 35.55 | 35.90 | | | | |
| | Total | 199.94 | 210.60 | 636.79 | 658.18 | | | | |

State wise Acreages (000 ha.) & Production (000 tons) of Long Grain Non-Basmati(Sugandha)

| S. No | State | Area (in 000 Ha.) | | | |
|-------|---------------|-------------------|-------------|--------------------|--------------|
| | | 2016 | 2017 | 2016 | 2017* |
| | | Basmati Area | | Basmati Production | |
| 1 | Uttar Pradesh | 90.9 | 91.7 | 310.4 | 308.8 |
| 2 | Uttarakhand | 0.5 | 0.5 | 2.0 | 1.9 |
| | Total | 91.4 | 92.2 | 312.4 | 310.7 |

Chapter-3

District Wise Rice & Basmati Details

Haryana

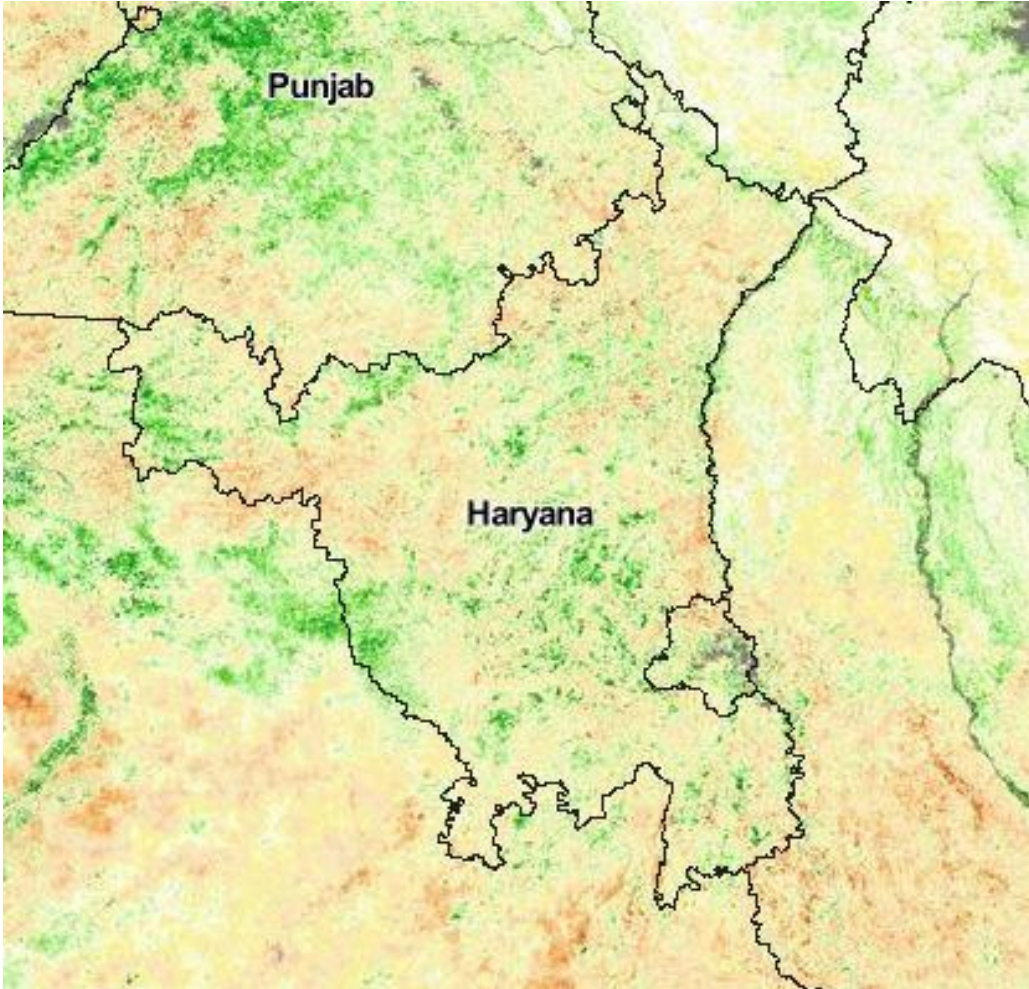
District-wise acreage(000ha.) under total rice and Basmati rice in Haryana during Kharif 2017

| Sl. No. | District | Pusa Basmati-1121 | CSR30 | Pusa Basmati-1509 | Pusa Basmati 1 | Punjab Basmati-3 | Pusa 1401 | Sharbati |
|---------|-------------|-------------------|---------|-------------------|----------------|------------------|-----------|----------|
| 1 | Kaithal | 34875.0 | 23094.0 | 3404.0 | 93.0 | | | 275.6 |
| 2 | Karnal | 36395.0 | 28370.0 | 9884.0 | 235.0 | | | 137.8 |
| 3 | Kurukshetra | 9990.0 | 13730.0 | 3045.0 | 2344.0 | | | 301.6 |
| 4 | Rohtak | 30727.0 | 58.0 | 60.0 | | | | 1050.0 |
| 5 | Faridabad | 7090.0 | | | 276.0 | | | 276.0 |
| 6 | Palwal | 14945.0 | | 225.0 | 2913.0 | | | 265.0 |
| 7 | Fatehabad | 23350.0 | 990.0 | 1519.0 | 11932.0 | | 6853.0 | 72.1 |
| 8 | Sirsa | 10089.5 | 312.0 | 3437.0 | 6109.0 | | 37481.0 | 504.7 |
| 9 | Jhajjar | 37375.0 | 258.0 | 1030.0 | | | | 275.6 |
| 10 | Bhiwani | 17785.0 | | | | | | 275.6 |
| 11 | Yamunana | 738.0 | 399.0 | 680.0 | 6895.0 | | | 275.6 |
| 12 | Panipat | 51317.0 | 7420.0 | 2490.0 | 2137.0 | | | 307.4 |
| 13 | Jind | 55289.0 | 5798.0 | 2137.0 | 7165.0 | | | 275.6 |
| 14 | Ambala | 6711.0 | 8823.0 | 137.0 | 235.0 | | | 84.0 |
| 15 | Sonepat | 61018.0 | 2810.0 | 1412.0 | | | | 275.6 |
| 16 | Hisar | 36047.0 | 1010.0 | 548.0 | 984.0 | | | 275.6 |
| 17 | Mewat | 6441.0 | | | | | | 275.6 |
| 18 | Rewari | 1100.0 | | | | | | 275.6 |
| 19 | Gurgaon | 2045.0 | | | 150.0 | | | 275.6 |
| 20 | Panchkula | | | | | | | 275.6 |
| | Total | 443327.5 | 93072.0 | 30008.0 | 41468.0 | 0.0 | 44334.0 | 6030.5 |

% change in acreage(000ha.) of Basmati & Non-Basmati varieties of rice in 2017 over 2016 in Haryana

| S.no | Variety | Acreage 2016 | Acreage 2017 | % Change |
|------|-------------------------------|--------------|--------------|----------|
| 1 | Basmati | | | |
| | Pusa Basmati-1121 | 504.88 | 443.5 | -12.2% |
| | Pusa Basmati-1 | 44.3 | 41.46 | -6% |
| | Pusa Basmati-1401 | 46.42 | 44.33 | -5.0% |
| | Pusa Basmati-1509 | 26.18 | 300 | 15.0% |
| | CSR-30 | 97.95 | 93.07 | -5.0% |
| 2 | Non-Basmati Long Grain | | | |
| | Sharbati | 5.75 | 6.0301 | 4.9% |

Haryana Satellite imagery and Photographs



Punjab

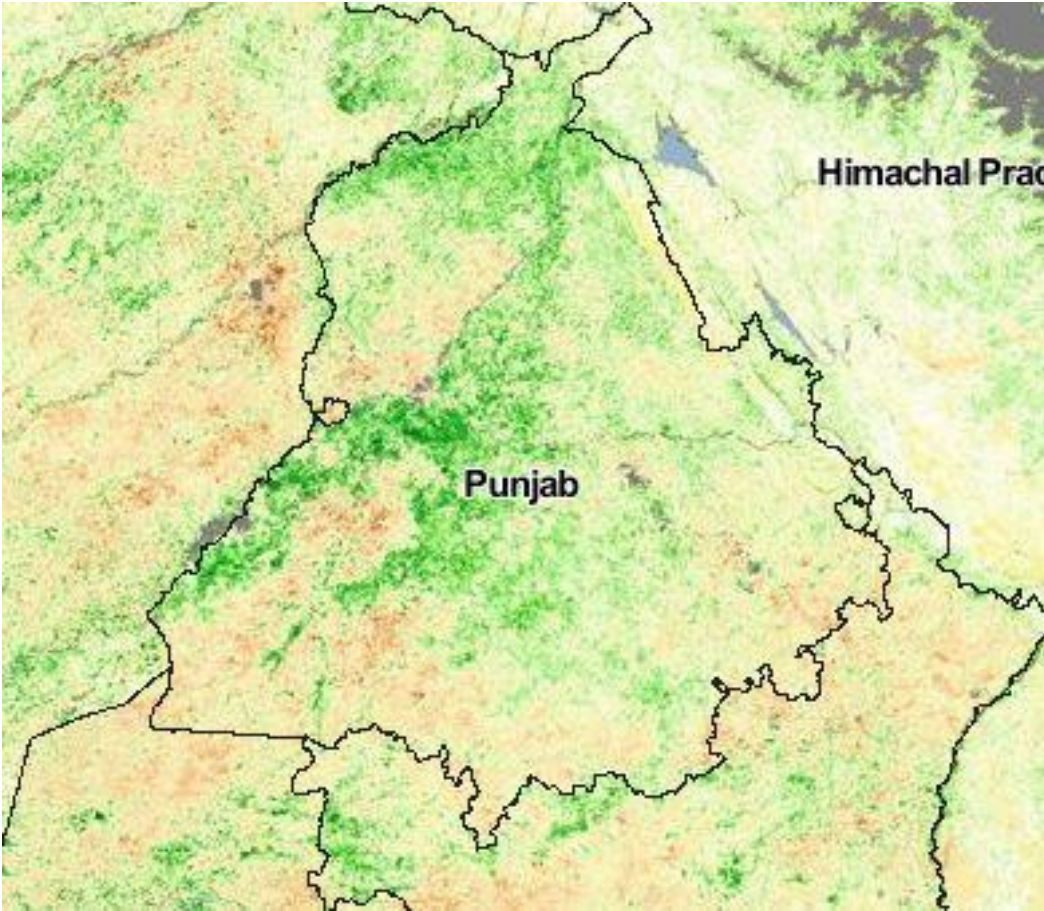
District-wise acreage(000ha.) under total rice and Basmati rice in Punjab during Kharif 2017

| Sl. No | District | Total Basmati | Pusa-1121 | Pusa-1509 | CSR-30 | Basmati-386/ CSR 30 | PB-1 | Sharbati |
|--------|-----------------|---------------|-----------|-----------|--------|---------------------|-------|----------|
| 1 | AMRITSAR | 104115.5 | 72662 | 31102 | | 351.5 | | 367.2 |
| 2 | BARNALA | 2381 | 1806 | 0 | | | 575 | |
| 3 | BATHINDA | 9599 | 9599 | 0 | | | | |
| 4 | FARIDKOT | 20520 | 20520 | | | | | |
| 5 | FATEHGARH SAHIB | 9463 | 7558 | | | | 1905 | |
| 6 | FAZILKA | 66811 | 66811 | | | | | |
| 7 | FEROZEPUR | 48339 | 48339 | | | | | |
| 8 | GURDASPUR | 42028 | 41878 | 150 | | | | 3594.7 |
| 9 | HOSHIARPUR | 6610 | 6610 | | | | | |
| 10 | JALANDHAR | 10480 | 9645 | 835 | | | | |
| 11 | KAPURTHALA | 7731 | 7731 | | | | | |
| 12 | LUDHIANA | 23077 | 17517 | 2265 | | | 3295 | |
| 13 | MANSA | 862 | 862 | | | | | |
| 14 | MOGA | 18319 | 18159 | | | | 160 | |
| 15 | MOHALI | 3900 | 3900 | | | | | |
| 16 | MUKATSAR | 50785 | 42500 | | | | 8285 | |
| 17 | NAWANSHAHR | 4947 | 4717 | 230 | | | | |
| 18 | PATHANKOT | 2839 | 2769 | 70 | | | | 1938 |
| 19 | PATIALA | 20213 | 16215 | 1285 | | | 2713 | |
| 20 | RUPNAGAR | 2878 | 2868 | 10 | | | | |
| 21 | SANGRUR | 31439 | 25314 | | | | 6125 | |
| 22 | TARN TARAN | 75640 | 72080 | 3560 | | | | |
| | Total | 562976.5 | 500060 | 39507 | 0 | 351.5 | 23058 | 5899.9 |

% change in acreage(000ha.) of Basmati & Non-Basmati varieties of rice in 2017 over 2016 in Punjab

| S.no | Variety | Acreage 2016 | Acreage 2017 | % Change |
|------|-------------------------------|--------------|--------------|----------|
| 1 | Basmati | | | |
| | Pusa Basmati-1121 | 555.78 | 500 | -10.1% |
| | Pusa Basmati-1 | 24.28 | 23.05 | -5.1% |
| | Pusa Basmati-1509 | 35.2 | 39.50 | 9.9% |
| | Bas-386 | 0.37 | 0.35 | -5.0% |
| | Non-Basmati Long Grain | | | |
| 2 | Sharbati | 5.75 | 5.89 | 2.6% |

Punjab Satellite imagery and Photographs



Uttar Pradesh

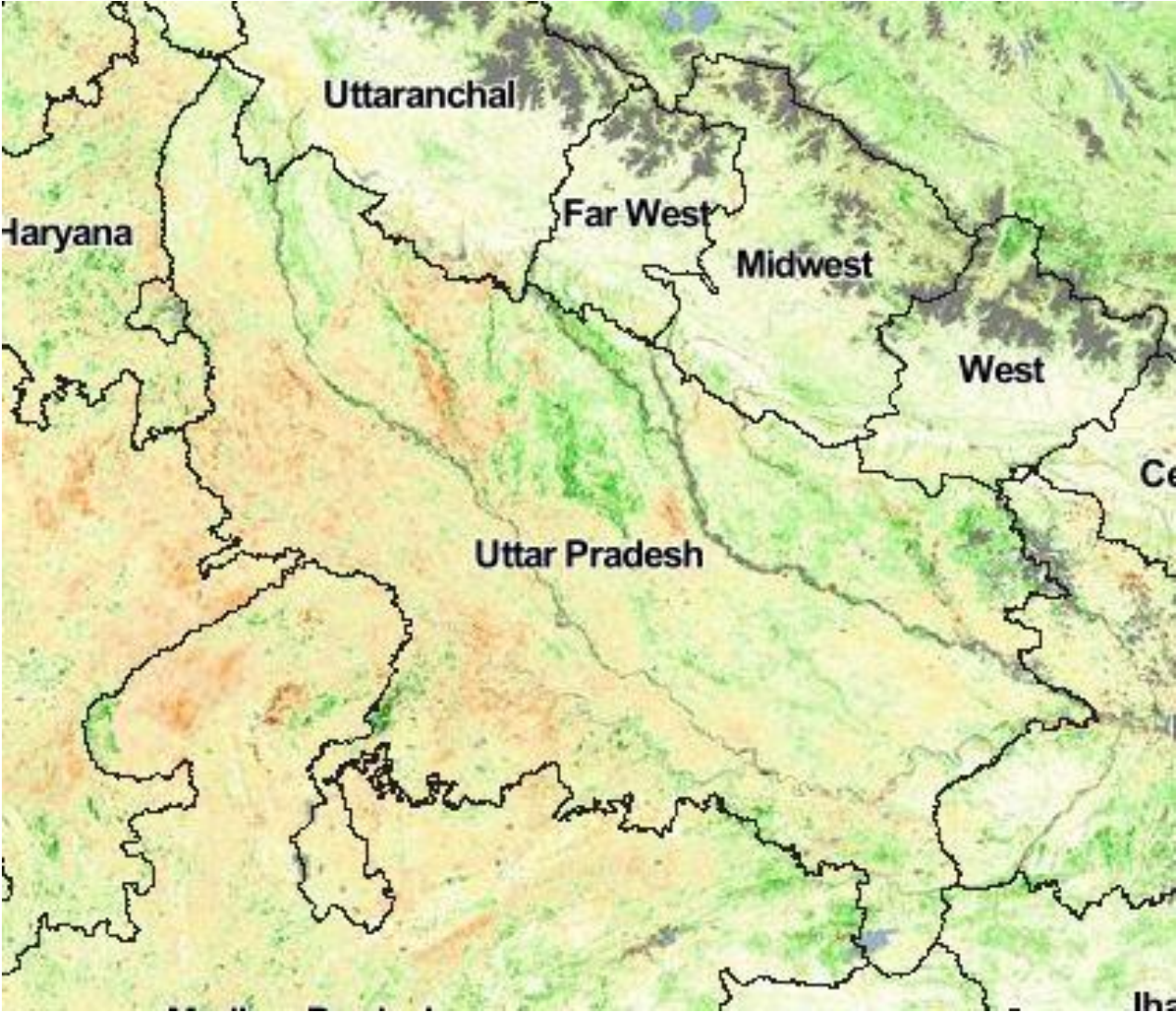
District-wise acreage(000ha.) under total rice and Basmati rice in U.P during Kharif 2017

| District | Type-3 & Others | Pusa Basmati-1121 | Pusa Basmati-1509 | Pusa Basmati-1 & 6 | Sharbati | Sugandha |
|----------------------|-----------------|-------------------|-------------------|--------------------|--------------|-------------|
| Agra | | 0.3 | 0.5 | 0.1 | | 2.2 |
| Aligarh | | 16.9 | 4.3 | 4.8 | 2.5 | 9.1 |
| Auraiya | 0.7 | 1.0 | 0.2 | 0.0 | 1.8 | 0.2 |
| Baghpat | 0.0 | 1.9 | 0.5 | 1.2 | 0.2 | 0.9 |
| Bareilly | 0.7 | 1.2 | 0.7 | 0.5 | 46.4 | 0.5 |
| Bijnore | 0.0 | 1.5 | 2.3 | 3.1 | 18.1 | 1.3 |
| Budaun | 9.4 | 1.9 | 2.1 | 0.7 | 20.8 | 2.0 |
| Bulandshahr | 0.0 | 19.1 | 4.5 | 5.8 | 4.5 | 14.8 |
| Etah+Kasganj | 0.0 | 4.9 | 3.1 | 0.5 | 0.9 | 7.4 |
| Farukhabad | 0.0 | 1.7 | 0.9 | 0.1 | 0.1 | 2.4 |
| Firozabad | 0.0 | 2.3 | 1.3 | 0.2 | 0.1 | 5.3 |
| Etawah | 0.0 | 6.2 | 2.6 | 0.2 | 0.1 | 4.6 |
| Gautam Buddha Nagar | 0.0 | 17.7 | 0.8 | 1.8 | 1.4 | 0.9 |
| Ghaziabad+Hapur | 0.0 | 5.4 | 2.9 | 1.4 | 3.1 | 5.0 |
| Hathras | 0.0 | 3.9 | 2.4 | 0.8 | 0.7 | 5.9 |
| Mathura | 0.0 | 22.8 | 3.4 | 1.0 | 0.3 | 3.4 |
| Mainpuri | 0.0 | 15.5 | 2.5 | 0.2 | 0.2 | 6.0 |
| Meerut | 0.0 | 2.2 | 2.5 | 2.3 | 0.6 | 3.2 |
| Moradabad | 0.0 | 0.9 | 2.2 | 0.3 | 9.3 | 2.4 |
| J. P. Nagar | 0.0 | 1.2 | 2.0 | 1.0 | 7.2 | 2.8 |
| Kannauj | 0.0 | 0.6 | 1.4 | 0.2 | 0.1 | 1.4 |
| Muzaffarnagar+Shamli | 0.1 | 4.3 | 2.5 | 3.9 | 1.3 | 2.0 |
| Pilibhit | 0.0 | 0.8 | 3.4 | 0.2 | 5.4 | 0.4 |
| Rampur | 0.0 | 0.7 | 1.2 | 0.1 | 24.0 | 0.2 |
| Saharanpur | 0.2 | 6.9 | 3.3 | 11.9 | 7.5 | 2.9 |
| Shahjehanpur | 1.7 | 1.5 | 0.8 | 0.3 | 8.7 | 0.4 |
| Sambhal | 0.0 | 1.4 | 1.7 | 0.4 | 8.5 | 4.4 |
| Total | 12.8 | 144.9 | 56.0 | 42.8 | 173.6 | 91.7 |

% change in acreage(000ha.) of Basmati & Non-Basmati varieties of rice in 2017 over 2016 in U.P

| S.no | Variety | Acreage 2016 | Acreage 2017 | % Change |
|----------|-------------------------------|--------------|--------------|----------|
| 1 | Basmati | | | |
| | Pusa Basmati-1121 | 156.26 | 144.9083 | -7.3% |
| | Pusa Basmati-1 & 6 | 43.29 | 42.8375 | -1.0% |
| | Pusa Basmati-1509 | 53.65 | 55.9503 | 4.3% |
| | Type 3 & Others | 12.97 | 12.8394 | -1.0% |
| | Non-Basmati Long Grain | | | |
| 2 | Sharbati | 163.92 | 173.5609 | 5.6% |
| | Sugandha | 90.86 | 91.71955 | 0.9% |

Uttar Pradesh imagery and Photographs



Uttarakhand

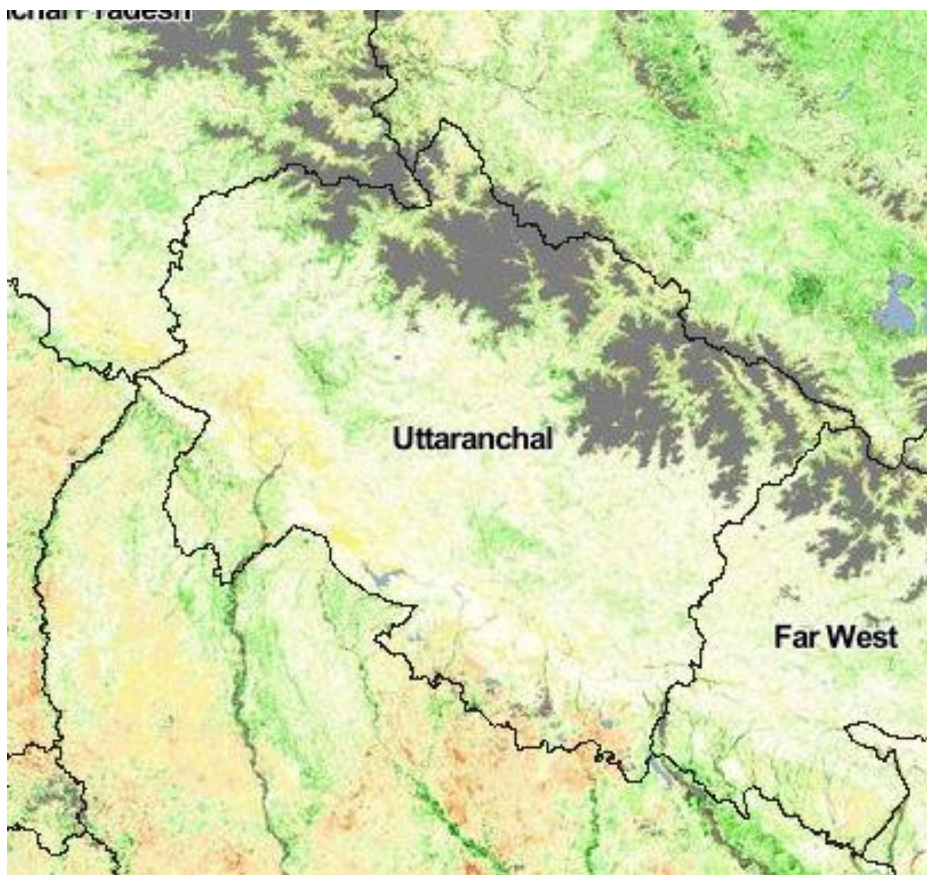
District-wise acreage(000ha.) under total rice and Basmati rice in U.K during Kharif 2017

| District | Type-3 & Others | Pusa Basmati-1121 | Pusa Basmati-1509 | Pusa Basmati-1 | Sharbati | Sugandha |
|--------------|-----------------|-------------------|-------------------|----------------|----------|----------|
| Dehradun | 2.5 | 0.3 | 0.2 | | 2.475 | 0.06 |
| Haridwar | 2.4 | 1.4 | 0.5 | 2.156 | 3.590 | 0.26 |
| Nainital | 0.9 | 0.3 | 0.3 | | 1.414 | |
| U S Nagar | 0.8 | 1.5 | 1.5 | 0.1176 | 7.487 | 0.17 |
| Total | 6.4 | 3.5 | 2.5 | 2.2736 | 14.965 | 0.49 |

% change in acreage(000ha.) of Basmati & Non-Basmati varieties of rice in 2017 over 2016 in U.K

| S.no | Variety | Acreage 2016 | Acreage 2017 | % Change |
|----------|-------------------------------|--------------|--------------|----------|
| 1 | Basmati | | | |
| | Pusa Basmati-1121 | 4.2 | 3.538 | -15.8% |
| | Pusa Basmati-1 | 2.32 | 2.2736 | -2.0% |
| | Pusa Basmati-1509 | 2.5 | 2.5325 | 1.3% |
| | Type 3 & Others | 6.6 | 6.444 | -2.4% |
| 2 | Non-Basmati Long Grain | | | |
| | Sharbati | 14.57 | 14.965 | 2.7% |
| | Sugandha | 0.49 | 0.4932 | 0.7% |

Uttarakhand imagery



Jammu & Kashmir

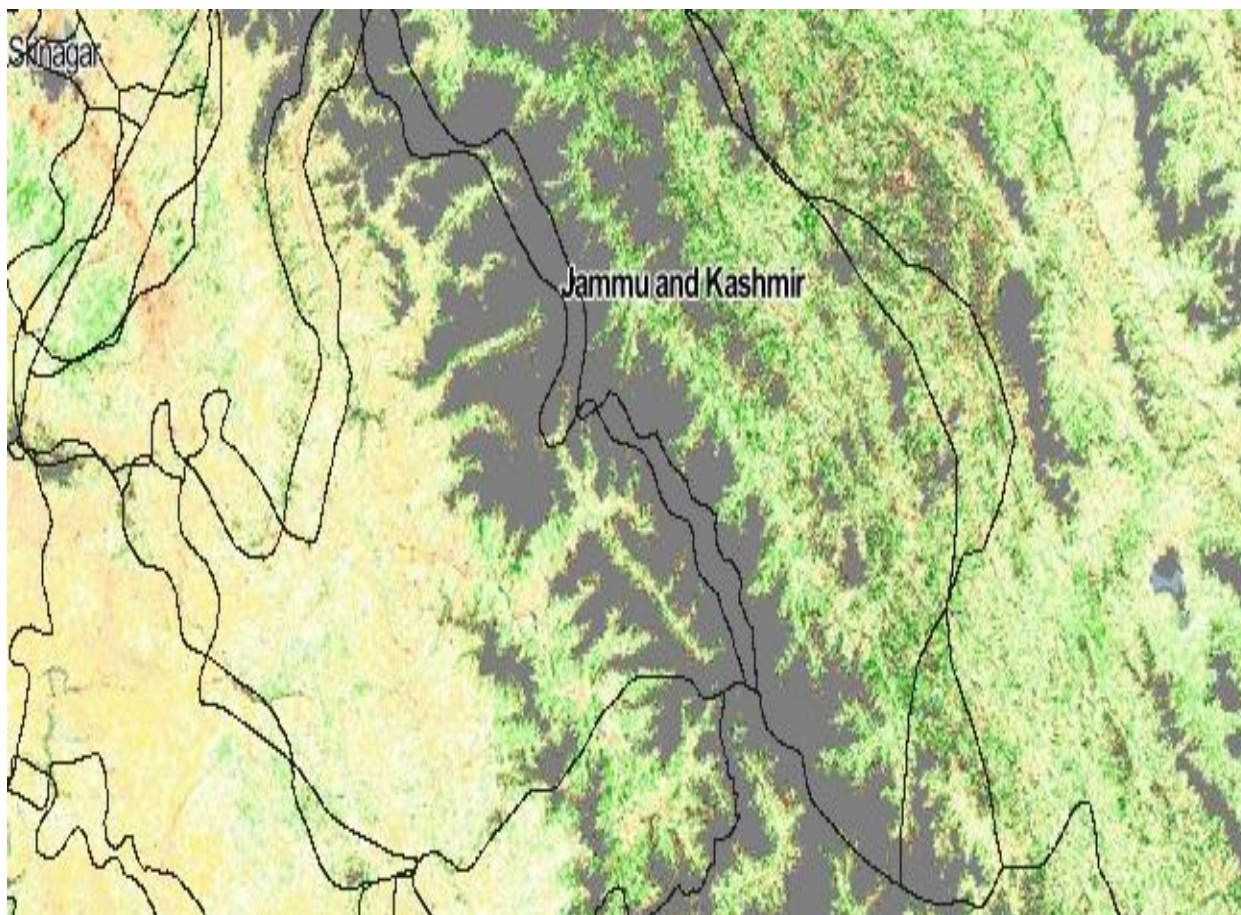
District-wise acreage(000ha.) under total rice and Basmati rice in J.K during Kharif 2017

| District | Pusa Basmati- 1121 | Pusa Basmati 1509 | Basmati 370/ Ranbir | Sharbati |
|--------------|--------------------|-------------------|---------------------|-------------|
| Jammu | 1.4 | 0.0 | 47.2 | 9.1 |
| Kathua | 6.3 | 0.2 | 3.8 | 0.7 |
| Samba | 0.6 | 0.1 | 2.1 | 0.3 |
| Total | 8.2 | 0.3 | 53.1 | 10.1 |

% change in acreage(000ha.) of Basmati & Non-Basmati varieties of rice in 2017 over 2016 in J.K

| S.no | Variety | Acreage 2016 | Acreage 2017 | % Change |
|----------|-------------------------------|--------------|--------------|----------|
| 1 | Basmati | | | |
| | Pusa Basmati-1121 | 8.4 | 8.212 | -2.2% |
| | Pusa Basmati 1509 | 0.25 | 0.255 | 2.0% |
| | Basmati 370/ Ranbir | 53.6 | 53.064 | -1.0% |
| 2 | Non-Basmati Long Grain | | | |
| | Sharbati | 9.95 | 10.149 | 2.0% |

Jammu & Kashmir imagery



Himachal Pradesh

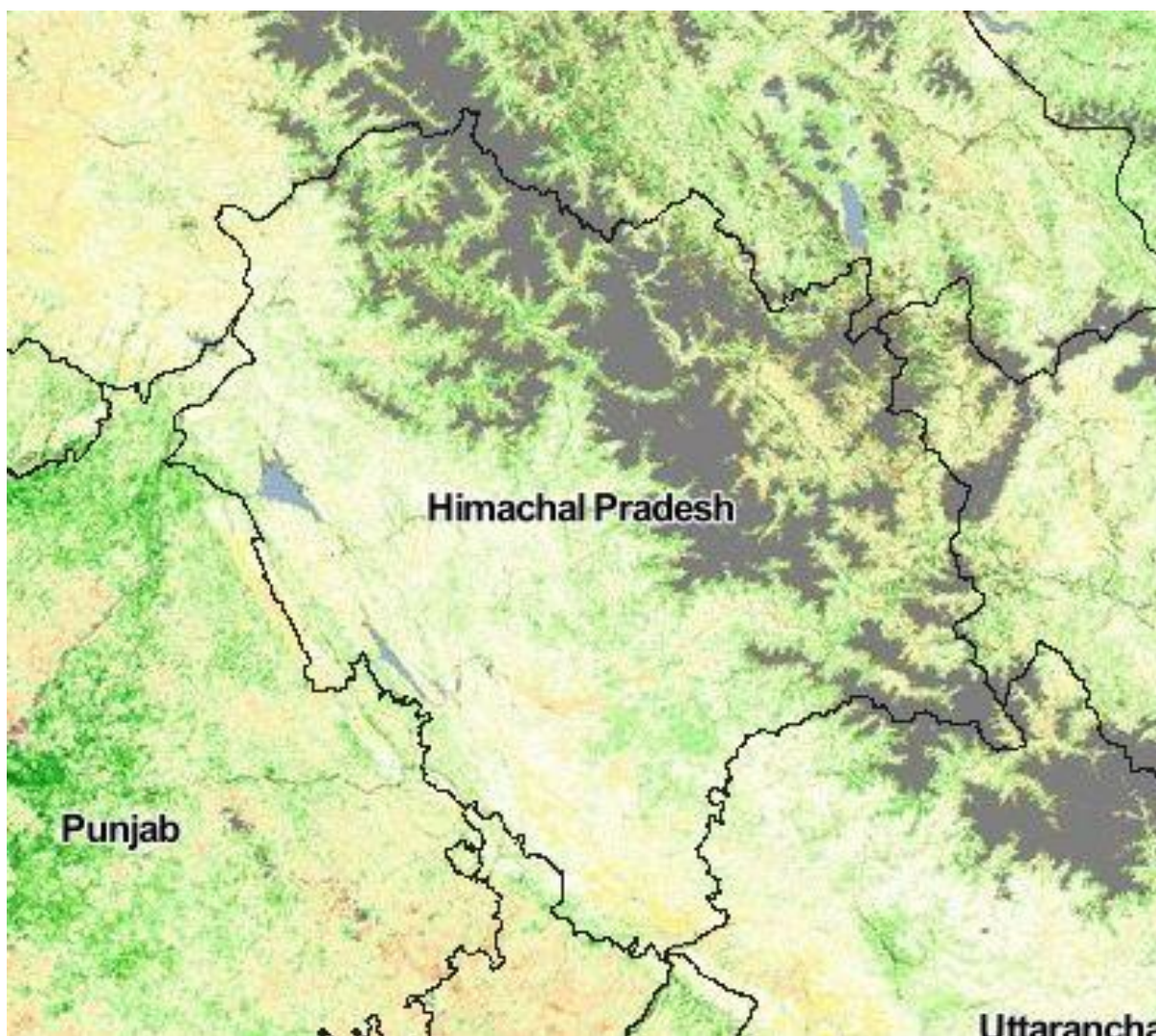
District-wise acreage(000ha.) under total rice and Basmati rice in H.P during Kharif 2017

| District | Pusa Basmati 1121 | Pusa Basmati 1509 |
|----------|-------------------|-------------------|
| Kangra* | 1.9 | 1.0 |
| Mandi* | | 4.1 |
| Total | 1.9 | 5.1 |

% change in acreage(000ha.) of Basmati & Non-Basmati varieties of rice in 2017 over 2016 in H.P

| S.no | Variety | Acreage 2016 | Acreage 2017 | % Change |
|------|-------------------|----------------|--------------|----------|
| 1 | | <i>Basmati</i> | | |
| | Pusa Basmati 1121 | 2 | 1.92 | -4.0% |
| | Pusa Basmati 1509 | 5 | 5.1 | 2.0% |

Himachal Pradesh imagery



Chapter-4

District wise Production Details of Basmati & Long Grain Non- Notified Non-Basmati (Prdn in 000 tons)

Haryana

| District | Total Basmati | Pusa Basmati 1121 | Pusa 1509 | CSR-30 | PB -1 | PB 1401 | Sharbati |
|----------------------|---------------|-------------------|--------------|--------------|--------------|--------------|-------------|
| Ambala | 38.9 | 17.3 | 0.6 | 19.9 | 1.1 | | 0.4 |
| Bhiwani | 59.7 | 59.7 | | | | | 0.9 |
| Faridabad + Palwal | 79.5 | 64.6 | 0.9 | | 14.0 | | 1.1 |
| Fatehabad | 6.7 | 6.0 | | | 0.7 | | 0.9 |
| Gurgaon | 232.2 | 94.2 | 7.8 | 2.9 | 79.7 | 47.6 | 0.3 |
| Hisar | 151.1 | 141.3 | 2.9 | 2.8 | 4.1 | | 0.9 |
| Jajjhar | 126.6 | 121.6 | 4.4 | 0.6 | | | 0.9 |
| Jind | 319.6 | 257.3 | 9.4 | 16.9 | 36.0 | | 0.9 |
| Kaithal | 213.7 | 127.8 | 17.3 | 68.1 | 0.5 | | 0.9 |
| Karnal | 285.1 | 150.4 | 48.8 | 84.9 | 1.1 | | 0.4 |
| Kurukshetra | 108.6 | 39.0 | 14.8 | 42.8 | 12.1 | | 1.0 |
| Mewat | 22.6 | 22.6 | | | | | 0.9 |
| MahendraGarh | 0.0 | | | | | | 0.9 |
| Panchkula | 0.0 | | | | | | 0.9 |
| Panipat | 206.4 | 157.8 | 12.0 | 28.9 | 7.7 | | 1.3 |
| Rewari | 3.9 | 3.9 | | | | | 0.9 |
| Rohtak | 105.6 | 105.4 | | 0.1 | | | 3.4 |
| Sirsa | 325.6 | 49.4 | 19.8 | 0.8 | 30.6 | 224.9 | 2.0 |
| Sonepat | 209.2 | 194.3 | 5.7 | 9.1 | | | 0.9 |
| Yamunanagar | 43.0 | 2.9 | 3.5 | 1.2 | 35.3 | | 0.9 |
| TOTAL HARYANA | 2537.9 | 1615.5 | 147.9 | 279.0 | 223.0 | 272.5 | 21.2 |

Punjab

| District | Total Basmati | Pusa Basmati 1121 | Pusa 1509 | Bas-386 | PB -1 |
|-----------------|---------------|-------------------|-----------|---------|-------|
| Amritsar | 420.1 | 266.8 | 152.5 | 0.9 | 0.0 |
| Barnala | 9.5 | 7.1 | 0.0 | | 2.4 |
| Bhatinda | 32.2 | 32.2 | 0.0 | | 0.0 |
| Faridkot | 83.6 | 83.6 | 0.0 | | 0.0 |
| Fatehgarh Sahib | 39.3 | 30.1 | 0.0 | | 9.2 |
| Fazilka | 273.2 | 273.2 | 0.0 | | 0.0 |
| Firozepur | 173.6 | 173.6 | 0.0 | | 0.0 |
| Gurdaspur | 152.5 | 152.1 | 0.4 | | 0.0 |
| Pathankot | 7.6 | 7.6 | 0.0 | | 0.0 |
| Hoshiarpur | 24.8 | 24.8 | 0.0 | | 0.0 |
| Jalandhar | 36.7 | 36.3 | 0.4 | | 0.0 |
| Kapurthala | 27.2 | 27.2 | 0.0 | | 0.0 |
| Ludhiana | 89.8 | 64.4 | 11.1 | | 14.3 |
| Mansa | 3.2 | 3.2 | 0.0 | | 0.0 |
| Moga | 45.4 | 44.8 | 0.0 | | 0.6 |
| Mohali | 11.9 | 11.9 | 0.0 | | 0.0 |
| Muktsar | 190.2 | 150.4 | 0.0 | | 39.9 |
| Nawanshahar | 17.5 | 16.5 | 1.1 | | 0.0 |
| Patiala | 81.5 | 63.4 | 5.5 | | 12.6 |

| District | Total Basmati | Pusa Basmati 1121 | Pusa 1509 | Bas-386 | PB -1 |
|--------------|---------------|-------------------|--------------|------------|--------------|
| Rupnagar | 9.6 | 9.6 | 0.0 | | 0.0 |
| Sangrur | 127.9 | 96.8 | 0.0 | | 31.1 |
| Tarantaran | 284.3 | 266.2 | 18.0 | | 0.0 |
| Total | 2141.8 | 1840.3 | 188.9 | 0.9 | 110.1 |

Uttar Pradesh

| District | Total Basmati | Pusa Basmati-1121 | Pusa Basmati-1509 | Pusa Basmati-1 & 6 | Type-3 & Others | Sharbati | Sugandha |
|----------------------|---------------|-------------------|-------------------|--------------------|-----------------|--------------|--------------|
| Agra | 2.9 | 0.8 | 1.8 | 0.2 | | | 6.4 |
| Aligarh | 78.0 | 46.3 | 18.3 | 13.4 | | 8.5 | 28.0 |
| Auraiya | 4.4 | 2.6 | 0.5 | 0.2 | 1.2 | 5.0 | 0.6 |
| Baghpat | 11.1 | 5.5 | 2.1 | 3.5 | 0.0 | 0.8 | 2.3 |
| Bareilly | 8.2 | 3.2 | 2.3 | 1.3 | 1.4 | 134.5 | 1.6 |
| Bijnore | 20.5 | 3.5 | 7.9 | 9.1 | | 56.3 | 4.8 |
| Budaun | 27.9 | 4.9 | 6.1 | 2.2 | 14.8 | 63.0 | 6.8 |
| Bulandshahr | 92.7 | 54.6 | 18.7 | 19.5 | | 15.5 | 52.3 |
| Etah+Kasganj | 23.6 | 11.9 | 10.1 | 1.5 | | 2.5 | 23.5 |
| Farukhabad | 7.3 | 4.6 | 2.5 | 0.2 | | 0.4 | 6.9 |
| Firozabad | 11.6 | 6.0 | 4.9 | 0.7 | | 0.3 | 17.2 |
| Etawah | 27.1 | 17.8 | 8.8 | 0.5 | | 0.2 | 13.5 |
| Gautam Buddha Nagar | 62.2 | 52.9 | 3.3 | 6.0 | 0.0 | 4.8 | 2.9 |
| Ghaziabad+Hapur | 35.4 | 17.9 | 12.8 | 4.7 | | 9.0 | 18.5 |
| Hathras | 21.9 | 11.3 | 8.1 | 2.6 | | 2.1 | 19.3 |
| Mathura | 85.8 | 69.5 | 12.9 | 3.4 | | 1.0 | 13.6 |
| Mainpuri | 50.2 | 41.7 | 7.8 | 0.7 | | 0.5 | 19.8 |
| Meerut | 23.7 | 5.9 | 10.2 | 7.5 | 0.1 | 2.0 | 12.1 |
| Moradabad | 11.8 | 2.8 | 8.0 | 1.0 | | 31.0 | 7.9 |
| J. P. Nagar | 13.0 | 3.0 | 7.1 | 2.9 | | 23.4 | 8.9 |
| Kannauj | 6.3 | 1.6 | 4.3 | 0.4 | | 0.4 | 4.3 |
| Muzaffarnagar+Shamli | 35.0 | 11.5 | 10.5 | 12.8 | 0.2 | 3.6 | 8.0 |
| Pilibhit | 16.2 | 2.5 | 13.2 | 0.5 | | 16.6 | 1.4 |
| Rampur | 6.9 | 1.9 | 4.5 | 0.5 | | 71.3 | 0.8 |
| Saharanpur | 69.7 | 19.5 | 12.6 | 37.1 | 0.5 | 22.2 | 10.5 |
| Shahjehanpur | 11.4 | 4.4 | 3.2 | 0.8 | 2.9 | 29.1 | 1.4 |
| Sambhal | 11.6 | 3.7 | 6.6 | 1.3 | 0.0 | 25.2 | 15.4 |
| Total | 776.5 | 411.9 | 209.1 | 134.4 | 21.1 | 529.1 | 308.8 |

Uttarakhand

| District | Total Basmati | Pusa Basmati-1121 | Pusa Basmati-1509 | Pusa Basmati-1 | Type-3 & Others | Sharbati | Sugandha |
|--------------|---------------|-------------------|-------------------|-----------------|-----------------|---------------|-------------|
| Dehradun | 6.2 | 0.8 | 0.7 | | 4.7 | 7.461 | 0.24 |
| Haridwar | 18.1 | 4.0 | 2.3 | 7.33628 | 4.5 | 13.396 | 1.06 |
| Nainital | 3.4 | 0.7 | 0.9 | | 1.7 | 4.676 | |
| U S Nagar | 11.8 | 3.8 | 6.3 | 0.364952 | 1.4 | 24.201 | 0.63 |
| Total | 39.5 | 9.3 | 10.2 | 7.701232 | 12.3 | 49.735 | 1.93 |

Jammu & Kashmir

| District | Pusa Basmati- 1121 | Pusa Basmati 1509 | Basmati 370/ Ranbir | Sharbati |
|--------------|--------------------|-------------------|---------------------|----------|
| Jammu | 4.4 | 0.0 | 94.5 | 32.3 |
| Kathua | 20.6 | 0.8 | 7.6 | 2.6 |
| Samba | 0.2 | 0.3 | 3.8 | 1.0 |
| Total | 25.1 | 1.1 | 105.9 | 35.9 |

Himachal Pradesh

| District | Pusa Basmati 1121 | Pusa Basmati 1509 |
|--------------|-------------------|-------------------|
| Kangra* | 7.2 | 4.5 |
| Mandi* | | 17.8 |
| Total | 7.2 | 22.3 |

Chapter- 5

Block wise and Variety wise acreage under total rice and Basmati + Scented varieties in Haryana (2017)

| Sl. No. | District | Block | Pusa Basmati-1121 | CSR30 | Pusa Basmati-1509 | Pusa Basmati - 1 | Punjab Basmati-3 | Taraori (HBC-19) | Pusa 1401 | Shar bati |
|----------|--------------------|------------------|-------------------|--------------|-------------------|------------------|------------------|------------------|--------------|--------------|
| 1 | Kaithal | | 34875 | 23094 | 3404 | 93 | | | | 276 |
| | | Pundri | 3650 | 14242 | 812 | 24 | | | | 0 |
| | | Seevan | 725 | 312 | 512 | 15 | | | | 0 |
| | | Gulha | 5450 | 650 | 483 | 8 | | | | 0 |
| | | Rajond | 5580 | 1035 | 775 | 22 | | | | 0 |
| | | Kaithal | 8630 | 4760 | 410 | 12 | | | | 0 |
| | | Kalayath | 10840 | 2095 | 412 | 12 | | | | 0 |
| 2 | Karnal | | 36395 | 28370 | 9884 | 235 | | | | 138 |
| | | Nissang | 6980 | 6615 | 1312 | 35 | | | | 0 |
| | | Assandh | 10840 | 2305 | 815 | 22 | | | | 0 |
| | | Nilokheri | 2245 | 12195 | 1750 | 38 | | | | 0 |
| | | Gharunda | 5025 | 1150 | 3180 | 75 | | | | 138 |
| | | Indri | 5225 | 3720 | | | | | | 0 |
| | | Karnal | 6080 | 2385 | 2827 | 65 | | | | 0 |
| 3 | Kurukshetra | | 9990 | 13730 | 3045 | 2344 | | | | 302 |
| | | KRK | 5150 | 2756 | 1260 | 65 | | | | 0 |
| | | Babain | 125 | 127 | 340 | 285 | | | | 16 |
| | | Ladwa | 590 | | 765 | 1832 | | | | 0 |
| | | Pehowa | 2875 | 8525 | 680 | | | | | 286 |
| | | Sahabad | 1250 | 2322 | | 162 | | | | 0 |
| 4 | Rohtak | | 30727 | 58 | 60 | | | | | 1050 |
| | | Rohtak | 10180 | | | | | | | 0 |
| | | Lakhanmajra | 3257 | 28 | 60 | | | | | 0 |
| | | Sampla | 3725 | | | | | | | 0 |
| | | Meham | 9340 | 8 | | | | | | 1050 |
| | | Kalanaur | 4225 | 22 | | | | | | 0 |
| 5 | Faridabad | | 7090 | | | 276 | | | | 276 |
| | | Faridabad | 1560 | | | 140 | | | | |
| | | Ballabgarh | 5530 | | | 136 | | | | |
| 6 | Palwal | | 14945 | | 225 | 2913 | | | | 265 |
| | | Palwal | 8325 | | 225 | 1278 | | | | 0 |
| | | Hodal | 1610 | | | 178 | | | | 0 |
| | | Hathin | 2245 | | | 375 | | | | 159 |
| | | Hassanpur | 2765 | | | 1082 | | | | 106 |
| 7 | Fatehabad | Hassanpur | 23350 | 990 | 1519 | 11932 | | | 6853 | 72.1 |
| | | Tohana | 3960 | 45 | 625 | 876 | 0 | 0 | 345 | 72 |
| | | Fatehabad | 9385 | 150 | 25 | 4568 | 0 | 0 | 948 | 0 |
| | | Bhuna | 2455 | 148 | 222 | 735 | 0 | 0 | 50 | 0 |
| | | Ratia | 5340 | 612 | 105 | 5465 | 0 | 0 | 3875 | 0 |
| | | Jakhal | 1125 | 35 | 527 | 240 | 0 | 0 | 1170 | 0 |
| | | Bhattukalan | 1085 | | 15 | 48 | 0 | 0 | 465 | 0 |
| 8 | Sirsa | | 10089.5 | 312 | 3437 | 6109 | | | 37481 | 504.7 |
| | | Ellanbad | 1910 | | 1125 | 1275 | | | 11025 | 0 |
| | | Sirsa | 7310 | | 1175 | 2654 | | | 10235 | 505 |
| | | Rania | 390 | 312 | 1085 | 1648 | | | 12774 | 0 |
| | | Baragua | | | | | | | | 0 |
| | | Dabwali | | | | | | | | 0 |
| | | Odhan | | | | | | | | 0 |

| Sl. No. | District | Block | Pusa Basmati-1121 | CSR30 | Pusa Basmati-1509 | Pusa Basmati - 1 | Punjab Basmati-3 | Taraori (HBC-19) | Pusa 1401 | Sharbati |
|-----------|--------------------|---------------|-------------------|-------------|-------------------|------------------|------------------|------------------|-----------|----------------|
| | | Natusari | 480 | | 52 | 532 | | | 3447 | 0 |
| 9 | Jhajjar | | 37375 | 258 | 1030 | | | | | 275.625 |
| | | Jajhhar | 9115 | 140 | 585 | | | | | 0 |
| | | Beri | 15815 | | | | | | | 0 |
| | | Sahlwas | 525 | | | | | | | 0 |
| | | Matnhill | 4875 | | | | | | | 0 |
| | | B/Garh | 7045 | 118 | 445 | | | | | 0 |
| 10 | Bhiwani | | 17785 | | | | | | | 275.625 |
| | | Bhiwani | 4554 | | | | | | | |
| | | Bhiwani Khera | 4321 | | | | | | | |
| | | Dadri | 4525 | | | | | | | |
| | | Dadri II | 4385 | | | | | | | |
| 11 | Yamunanagar | | 738 | 399 | 680 | 6895 | | | | 275.625 |
| | | Radore | 255 | 245 | 395 | 4632 | | | | 0 |
| | | Mustfabad | | 94 | | 225 | | | | 0 |
| | | Jagadhari | | 60 | | 1986 | | | | 0 |
| | | Bilaspur | 58 | | | | | | | 0 |
| | | Chachhroli | 425 | | 285 | 52 | | | | 0 |
| | | Sadhora | | | | | | | | 0 |
| 12 | Panipat | | 51317 | 7420 | 2490 | 2137 | | | | 307.4 |
| | | Panipat | 7330 | 1615 | 625 | | | | | 0 |
| | | Israna | 11222 | 2020 | 295 | | | | | 193 |
| | | Matloda | 12160 | 1995 | 775 | 2137 | | | | 115 |
| | | Samalkha | 9480 | 1312 | 795 | | | | | 0 |
| | | Bapoli | 11125 | 478 | | | | | | 0 |
| 13 | Jind | | 55289 | 5798 | 2137 | 7165 | | | | 275.625 |
| | | Narwana | 5940 | 886 | 340 | 3515 | | | | 0 |
| | | Jind | 8545 | 815 | 325 | 336 | | | | 0 |
| | | Julana | 7612 | 555 | | | | | | 0 |
| | | safidon | 12745 | | 442 | 814 | | | | 0 |
| | | Pilukhera | 8500 | 1762 | | 350 | | | | 0 |
| | | Alewa | 7285 | 815 | 1030 | 2150 | | | | 0 |
| | | Uchana | 4662 | 965 | | | | | | 0 |
| 14 | Ambala | | 6711 | 8823 | 137 | 235 | | | | 84 |
| | | Naraingarh | | | | 135 | | | | 53 |
| | | Ambala-I | 5150 | 8530 | 85 | | | | | 0 |
| | | Ambala-II | 652 | 75 | | | | | | 0 |
| | | Baraar | 606 | 218 | 10 | 90 | | | | 32 |
| | | Saha | 326 | | 42 | | | | | 0 |
| | | Sahzadpur | | | | 9 | | | | 0 |
| 15 | Sonepat | | 61018 | 2810 | 1412 | | | | | 275.625 |
| | | Gohana | 8140 | 450 | 130 | | | | | 0 |
| | | Mundana | 11127 | 75 | | | | | | 0 |
| | | Kharkhoda | 4889 | 170 | 310 | | | | | 0 |
| | | Sonipat | 13717 | 1240 | 155 | | | | | 0 |
| | | Kathura | 4505 | | 142 | | | | | 0 |
| | | GANOUR | 12895 | 875 | 675 | | | | | 0 |
| | | Rai | 5745 | | | | | | | 0 |

| Sl. No. | District | Block | Pusa Basmati-1121 | CSR30 | Pusa Basmati-1509 | Pusa Basmati - 1 | Punjab Basmati-3 | Taraori (HBC-19) | Pusa 1401 | Sharbati |
|---------|--------------|---------|-------------------|-------|-------------------|------------------|------------------|------------------|-----------|----------|
| 16 | Hisar | Rai | 36047 | 1010 | 548 | 984 | | | | 275.625 |
| | | Hisar 1 | 1825 | | | | | | | 0 |
| | | Bas | 10545 | 928 | 358 | 248 | | | | 0 |
| | | Hansi | 11866 | | | | | | | 0 |
| | | Narnaud | 9152 | | 65 | 68 | | | | 0 |
| | | Agroha | 90 | | | | | | | 0 |
| | | Uklana | 1642 | 82 | 125 | 450 | | | | 0 |
| | | Barwala | 927 | | | 218 | | | | 0 |
| 17 | Mewat | | 6441 | | | | | | | 275.625 |
| | | Nuh | 2025 | | | | | | | |
| | | Punana | 1995 | | | | | | | |
| | | Nagina | 2421 | | | | | | | |
| 18 | Rewari | | 1100 | | | | | | | 275.625 |
| 19 | Gurgaon | | 2045 | | | 150 | | | | 275.625 |
| 20 | Panchkula | | | | | | | | | 276 |
| | Total | | 443328 | 93072 | 30008 | 41468 | 0 | 0 | 44334 | 6030 |

Block wise and Variety wise acreage under total rice and Basmati + Scented varieties in Punjab (2017)

| Sl. No. | District | Block | Total Basmati | Pusa-1121 | Pusa-1509 | Basmati-386/ CSR 30 | PB-1 | Sharbati |
|---------|-----------------|----------------|---------------|-----------|-----------|---------------------|------|----------|
| 1 | AMRITSAR | | 104116 | 72662 | 31102 | 352 | | 367.2 |
| | | Ajnala | 24890 | 10612 | 1852 | | | |
| | | Chogawan | 20735 | 8127 | 1822 | | | |
| | | Harsha Chhina | 15594 | 14287 | 3117 | | | |
| | | Jandiala Guru | 2388 | 3756 | 6846 | | | |
| | | Majitha | 8443 | 14427 | 8360 | | | |
| | | Rayya | 2875 | 3137 | 1730 | | | |
| | | Tarsikka | 4849 | 986 | 1150 | | | |
| | | Verka | 11976 | 11207 | 3050 | | | |
| | | Attari | 12366 | 6123 | 3175 | | | |
| 2 | BARNALA | | 2381 | 1806 | 0 | | 575 | |
| | | Barnala | 1066 | 466 | | | 25 | |
| | | Sehna | 770 | 648 | | | | |
| | | Mehal Kalan | 545 | 692 | | | 550 | |
| 3 | BATHINDA | | 9599 | 9599 | 0 | | | |
| | | Rampura Phul | 2109 | 1567 | 0 | | | |
| | | Nathana | 2449 | 3112 | 0 | | | |
| | | Bathinda | 1632 | 1767 | 0 | | | |
| | | Maur | 1131 | 1341 | 0 | | | |
| | | Sangat | 893 | 603 | 0 | | | |
| | | Talwandi | 510 | 471 | 0 | | | |
| | | Sabo | 493 | 222 | 0 | | | |
| | | Bhagta Bhai Ka | 383 | 516 | 0 | | | |
| 4 | FARIDKOT | | 20520 | 20520 | | | | |
| | | Faridkot | 9540 | 9562 | | | | |
| | | Kotkapura | 10980 | 10958 | | | | |
| 5 | FATEHGARH SAHIB | | 9463 | 7558 | | | 1905 | |

| Sl. No | District | Block | Total Basmati | Pusa-1121 | Pusa-1509 | Basmati-386/ CSR 30 | PB-1 | Sharbat i |
|-----------|-------------------|--------------------|---------------|--------------|------------|---------------------|------|---------------|
| | | Khera | 1802 | 1355 | | | 25 | |
| | | Bassi pathana | 1048 | 1537 | | | 30 | |
| | | Khamano | 1622 | 423 | | | 25 | |
| | | Sirhind | 2321 | 2075 | | | 1825 | |
| | | Amlah / Gobindgarh | 2670 | 2168 | | | | |
| 6 | FAZILKA | | 66811 | 66811 | | | | |
| | | Fazilka | 34645 | 28922 | | | | |
| | | Abohar | 5434 | 1413 | | | | |
| | | Jalalabad | 24091 | 35764 | | | | |
| | | Khuyian Sarvar | 2641 | 712 | | | | |
| 7 | FEROZEPUR | | 48339 | 48339 | | | | |
| | | Ferozepur | 6509 | 5885 | | | | |
| | | Ghall Khurd | 3706 | 7244 | | | | |
| | | Guru Har Sahai | 25448 | 19855 | | | | |
| | | Makhu | 3155 | 3675 | | | | |
| | | Mamdot | 6272 | 7958 | | | | |
| | | Zira | 3250 | 3722 | | | | |
| 8 | GURDASPUR | | 42028 | 41878 | 150 | | | 3594.7 |
| | | Gurdaspur | 3482 | 5391 | | | | |
| | | Dhariwal | 4035 | 4365 | | | | |
| | | Khanuwan | 2814 | 4112 | 150 | | | |
| | | Kalanaur | 4378 | 4205 | | | | |
| | | Dinanagar | 3663 | 3135 | | | | |
| | | Batala | 3320 | 3110 | | | | |
| | | Sh Hargobindpur | 3758 | 2948 | | | | |
| | | Fatehgarh Churian | 3281 | 3752 | | | | |
| | | Quadian | 4111 | 3075 | | | | |
| | | Dera Baba Nanak | 4893 | 3795 | | | | |
| | | Dorangla | 4292 | 3990 | | | | |
| 9 | HOSHIARPUR | | 6610 | 6610 | | | | |
| | | Hoshiarpur-I | 425 | | | | | |
| | | Hoshiarpur-II | 298 | | | | | |
| | | Bhunga | 416 | | | | | |
| | | Tanda | 1555 | 1887 | | | | |
| | | Dasuya | 199 | 1728 | | | | |
| | | Mukerian | 1836 | 1938 | | | | |
| | | Hajipur | 181 | 812 | | | | |
| | | Talwara | 271 | | | | | |
| | | Mahilpur | 534 | | | | | |
| | | Garhshankar | 895 | 245 | | | | |
| 10 | JALANDHAR | | 10480 | 9645 | 835 | | | |
| | | Jalandhar East | 859 | 1552 | | | | |
| | | Jalandhar West | 654 | 1274 | | | | |
| | | Adampur | 1279 | 775 | 60 | | | |
| | | Bhogpur | 1260 | 1015 | 250 | | | |
| | | Philour | 1992 | 835 | | | | |
| | | Rurka Kalan | 508 | 728 | | | | |
| | | Noor Mahal | 752 | 1135 | | | | |
| | | Nakodar | 1133 | 1255 | 50 | | | |
| | | Shahkot | 850 | 550 | 25 | | | |
| | | Lohian | 1192 | 526 | 450 | | | |
| 11 | KAPURTHALA | | 7731 | 7731 | | | | |
| | | Kapurthala | 987 | 1365 | | | | |
| | | Sultanpur Lodhi | 444 | 1618 | | | | |
| | | Phagwara | 1503 | 2248 | | | | |

| Sl. No | District | Block | Total Basmati | Pusa-1121 | Pusa-1509 | Basmati-386/ CSR 30 | PB-1 | Sharbat i |
|-----------|--------------------|------------------|---------------|--------------|-------------|---------------------|-------------|-------------|
| | | Dhilwan | 2263 | 1612 | | | | |
| | | Nadala | 2535 | 888 | | | | |
| 12 | LUDHIANA | | 23077 | 17517 | 2265 | | 3295 | |
| | | Ludhiana-I | 1614 | 1120 | | | | |
| | | Ludhiana-II | 1794 | 1087 | | | | |
| | | Machiwara | 1853 | 1066 | 550 | | 175 | |
| | | Samrala | 1698 | 548 | 1550 | | 160 | |
| | | Khanna | 1554 | 2705 | 35 | | 75 | |
| | | Doraha | 2212 | 811 | | | | |
| | | Dehlon | 3228 | 778 | | | | |
| | | Pakhowal | 1961 | 1365 | | | 1025 | |
| | | Sudhar | 1638 | 1260 | 58 | | 1175 | |
| | | Jagraon | 2284 | 1375 | 50 | | | |
| | | Sidhwan Bet | 1841 | 4060 | | | 685 | |
| | | Rai Kot | 1399 | 1342 | 25 | | | |
| 13 | MANSA | | 862 | 862 | | | | |
| | | Mansa | 181 | 175 | | | | |
| | | Bhikhi | 181 | 320 | | | | |
| | | Bhudhalada | 284 | 305 | | | | |
| | | Jhunir | 198 | 30 | | | | |
| | | sardulgarh | 17 | 32 | | | | |
| 14 | MOGA | | 18319 | 18159 | | | 160 | |
| | | Moga-I | 2519 | 4852 | | | | |
| | | Moga-II | 1002 | 1625 | | | | |
| | | Bagha Purana | 2316 | 6620 | | | 35 | |
| | | Nihal Singh wala | 7905 | 2580 | | | 125 | |
| | | Kot Ise khan | 4577 | 2482 | | | | |
| 15 | MOHALI | | 3900 | 3900 | | | | |
| | | Kharar | 1633 | 1125 | | | | |
| | | Majri | 1814 | 1265 | | | | |
| | | Derabassi | 453 | 1510 | | | | |
| 16 | MUKATSAR | | 50785 | 42500 | | | 8285 | |
| | | Muktsar | 10302 | 13345 | | | 125 | |
| | | Malout | 14333 | 10421 | | | 60 | |
| | | Giddarbaha | 10617 | 10405 | | | 2250 | |
| | | Lambi | 15534 | 8329 | | | 5850 | |
| 17 | NAWANSHAH R | | 4947 | 4717 | 230 | | | |
| | | Nawanshahr | 646 | 1225 | 100 | | | |
| | | Banga | 1472 | 1185 | 105 | | | |
| | | Aur | 2051 | 531 | 25 | | | |
| | | Balachaur | 551 | 1160 | | | | |
| | | Saroya | 228 | 616 | | | | |
| 18 | PATHANKOT | | 2839 | 2769 | 70 | | | 1938 |
| | | Pathankot | 971 | 715 | 35 | | | |
| | | N.J. Singh | 849 | 1307 | | | | |
| | | Bamial | 377 | 355 | | | | |
| | | Dhar | 0 | | | | | |
| | | Kalan | | | 35 | | | |
| | | Sujanpur | 311 | 392 | | | | |
| 19 | PATIALA | | 20213 | 16215 | 1285 | | 2713 | |
| | | Patiala | 2250 | 2120 | 25 | | | |
| | | Nabha | 3923 | 2583 | 25 | | 70 | |
| | | Saman | 1424 | 1340 | 65 | | 1368 | |
| | | Patran | 3098 | 1077 | 450 | | 1250 | |
| | | Bhunerheri | 124 | 3375 | | | | |

| Sl. No | District | Block | Total Basmati | Pusa-1121 | Pusa-1509 | Basmati-386/ CSR 30 | PB-1 | Sharbati |
|-----------|-------------------|------------------|---------------|---------------|--------------|---------------------|--------------|-------------|
| | | Sanour | 3459 | 2640 | 245 | | | |
| | | Rajpura | 3109 | 1295 | 475 | | | |
| | | Ghanour | 2826 | 1785 | | | 25 | |
| 20 | RUPNAGAR | | 2878 | 2868 | 10 | | | |
| | | Rupnagar | 475 | 1475 | | | | |
| | | Chamkaur Sahib | 1291 | 450 | | | | |
| | | Nurpur Bedi | 188 | 248 | | | | |
| | | Morinda | 762 | 580 | 10 | | | |
| | | Anandpur Sahib | 161 | 115 | | | | |
| 21 | SANGRUR | | 31439 | 25314 | | | 6125 | |
| | | Sangrur | 2341 | 3092 | | | | |
| | | Bhawanigarh | 2299 | 2745 | | | | |
| | | Ahmedgarh | 1014 | 2725 | | | | |
| | | Malerkotla | 847 | 2515 | | | | |
| | | Dhuri | 1777 | 1980 | | | | |
| | | Sherpur | 1965 | 2725 | | | 225 | |
| | | Sunam | 1819 | 3440 | | | | |
| | | Lehragaga | 9720 | 2950 | | | 4750 | |
| | | Andana | 9657 | 3142 | | | 1150 | |
| 22 | TARN TARAN | | 75640 | 72080 | 3560 | | | |
| | | TarnTaran | 9737 | 9512 | 175 | | | |
| | | Chohla Sahib | 3783 | 11835 | | | | |
| | | Naushera Pannuan | 13511 | 10715 | 1125 | | | |
| | | Gandiwind | 8123 | 7745 | 1210 | | | |
| | | Khadaur Sahib | 4482 | 5326 | 1050 | | | |
| | | Patti | 12030 | 8845 | | | | |
| | | Valtoha | 11973 | 8912 | | | | |
| | | Bhikhiwind | 12001 | 9190 | | | | |
| | Total | | 562977 | 500060 | 39507 | 352 | 23058 | 5900 |

Block wise and Variety wise acreage under total rice and Basmati + Scented varieties in U.P (2017)

| S. No. | District | Block | Total Rice | Pusa-1121 | Pusa Basmati-1 | Type -3 | H B C-19 | Basmati-370 | Pusa-1509 | CSR-30 | Sugandha 2,3&5 | Sharbati | Sugandha |
|----------|----------------|----------|----------------|-----------|----------------|---------|----------|-------------|-----------|--------|----------------|----------|----------|
| 1 | Aligarh | | 58300.0 | 16907.8 | 4806.8 | | | | 4336.8 | | | 2475.2 | 9059.7 |
| | | Dhanipur | 6200.4 | 3017.5 | 339.8 | | | | 265.5 | | | 224.1 | 197.1 |
| | | Lodha | 3744.8 | 1105.9 | 226.6 | | | | 223.9 | | | 203.2 | 358.7 |
| | | Jawan | 7551.0 | 2516.8 | 418.6 | | | | 369.6 | | | 317.9 | 864.0 |
| | | Akrabad | 6227.7 | 2617.0 | 305.4 | | | | 338.4 | | | 218.9 | 217.3 |
| | | Atroli | 4815.7 | 923.9 | 201.9 | | | | 359.2 | | | 218.9 | 1389.5 |
| | | Bijoli | 4208.6 | 896.6 | 128.1 | | | | 468.6 | | | 119.9 | 1086.4 |
| | | Gangiri | 4065.4 | 687.2 | 113.3 | | | | 359.2 | | | 177.2 | 1056.0 |
| | | Khair | 4836.2 | 1137.8 | 1516.9 | | | | 218.7 | | | 135.5 | 318.3 |
| | | Chandous | 3540.2 | 896.6 | 477.7 | | | | 328.0 | | | 93.8 | 656.9 |
| | | Tappal | 4577.0 | 1451.8 | 704.3 | | | | 442.5 | | | 99.0 | 490.1 |
| | | Iglas | 4283.7 | 723.6 | 93.6 | | | | 536.2 | | | 411.7 | 1298.6 |
| | | Gonda | 4249.5 | 933.0 | 280.7 | | | | 426.9 | | | 255.3 | 1126.8 |
| 2 | Hathras | | 13561.0 | 3873.2 | 792.0 | | | | 2412.8 | | | 695.5 | 5898.4 |
| | | Hasain | 3948.6 | 1054.7 | 237.6 | | | | 562.8 | | | 204.9 | 1559.4 |

| S. No. | District | Block | Total Rice | Pusa-1121 | Pusa Basmati-1 | Type -3 | H B C-19 | Basmati-370 | Pusa-1509 | CSR-30 | Sugandha 2,3&5 | Sharbati | Sugandha |
|----------|----------------------|--------------|----------------|-----------|----------------|---------|----------|-------------|-----------|--------|----------------|----------|----------|
| | | Sikandrarao | 4505.0 | 1552.0 | 242.6 | | | | 469.0 | | | 275.0 | 2004.9 |
| | | Sapau | 2904.8 | 695.4 | 153.5 | | | | 646.2 | | | 80.9 | 1265.8 |
| | | Mursan | 548.7 | 198.0 | 59.4 | | | | 151.1 | | | 43.1 | 146.8 |
| | | Hathras | 648.5 | 152.0 | 44.6 | | | | 198.0 | | | 21.6 | 420.2 |
| | | Sasani | 663.9 | 170.4 | 39.6 | | | | 182.4 | | | 32.3 | 389.9 |
| | | Sadabad | 341.5 | 50.7 | 14.9 | | | | 203.2 | | | 37.7 | 111.4 |
| 3 | Etah +Kasganj | | 33150.0 | 4878.6 | 485.1 | | | | 3135.1 | | | 882.0 | 7413.4 |
| | | Sheetalpur | 3646.5 | 540.5 | 55.0 | | | | 379.9 | | | 89.8 | 717.3 |
| | | Sakeet | 6287.6 | 911.8 | 80.0 | | | | 374.5 | | | 68.7 | 974.9 |
| | | Nindholikar | 2554.2 | 427.7 | 35.0 | | | | 155.2 | | | 42.3 | 207.1 |
| | | Marehara | 1592.3 | 361.9 | 10.0 | | | | 198.0 | | | 42.3 | 394.0 |
| | | Aliganj | 554.3 | 65.8 | 20.0 | | | | 128.4 | | | 21.1 | 106.1 |
| | | Jaithra | 277.2 | 37.6 | 15.0 | | | | 58.9 | | | 15.8 | 60.6 |
| | | Jalesar | 2407.5 | 361.9 | 35.0 | | | | 294.3 | | | 37.0 | 767.8 |
| | | Awagarh | 2374.8 | 488.8 | 40.0 | | | | 208.7 | | | 37.0 | 656.7 |
| | | Soron | 1673.8 | 202.1 | 15.0 | | | | 155.2 | | | 42.3 | 495.0 |
| | | Kasganj | 1624.9 | 253.8 | 15.0 | | | | 187.3 | | | 31.7 | 343.5 |
| | | Tilpura | 2662.9 | 371.3 | 55.0 | | | | 230.1 | | | 89.8 | 540.5 |
| | | Ganjdudwar | 1831.4 | 103.4 | 20.0 | | | | 208.7 | | | 68.7 | 500.1 |
| | | Patiyali | 2548.7 | 427.7 | 60.0 | | | | 224.7 | | | 163.7 | 666.8 |
| | | Amapur | 1690.1 | 216.2 | 20.0 | | | | 208.7 | | | 100.3 | 666.8 |
| | | Sawat | 1423.8 | 108.1 | 10.0 | | | | 123.1 | | | 31.7 | 316.2 |
| 4 | G.B. Nagar | | 26829.0 | 1772.4 | 1762.2 | | | | 782.8 | 8.8 | | 1375.5 | 852.6 |
| | | Bisrakh | 3550.6 | 2392.9 | 341.7 | | | | 56.7 | | | 152.3 | 24.6 |
| | | Dadri | 6330.2 | 3422.5 | 251.6 | | | | 437.8 | 8.8 | | 719.3 | 537.2 |
| | | Dankour | 7298.1 | 5035.0 | 549.8 | | | | 97.9 | | | 246.8 | 197.1 |
| | | Jebar | 9650.1 | 6877.9 | 619.1 | | | | 190.6 | | | 257.3 | 93.6 |
| 5 | Baghpat | | 4921.5 | 1895.7 | 1178.1 | | | | 535.5 | 21.9 | | 235.4 | 850.0 |
| | | Chhaproli | 702.4 | 263.2 | 134.2 | | | | 68.3 | 21.9 | | 23.3 | 155.0 |
| | | Barot | 682.7 | 281.0 | 124.3 | | | | 89.3 | | | 47.7 | 110.0 |
| | | Bagpat | 859.5 | 352.4 | 183.9 | | | | 84.0 | | | 37.1 | 165.0 |
| | | Kirana | 967.6 | 307.8 | 298.3 | | | | 110.3 | | | 42.4 | 185.0 |
| | | Khekhda | 972.5 | 419.3 | 253.5 | | | | 99.8 | | | 47.7 | 110.0 |
| | | Binoli | 736.8 | 272.1 | 183.9 | | | | 84.0 | | | 37.1 | 125.0 |
| 6 | Bulandshahr | | 51975.0 | 19080.8 | 5760.0 | | | | 4473.2 | 17.5 | | 4483.8 | 14776.3 |
| | | Sikandrabad | 5711.8 | 2976.2 | 867.8 | | | | 291.8 | | | 249.4 | 793.1 |
| | | Gulavati | 3191.4 | 1090.2 | 786.9 | | | | 228.2 | | | 408.6 | 419.3 |
| | | Lakhawati | 4564.3 | 2074.6 | 984.7 | | | | 281.2 | 13.1 | | 228.2 | 570.8 |
| | | Bulandshahar | 3539.8 | 1817.0 | 283.3 | | | | 222.9 | 4.4 | | 260.0 | 671.9 |
| | | Shikarpur | 3611.5 | 1320.2 | 188.9 | | | | 217.6 | | | 222.9 | 1470.1 |
| | | B.B. Nagar | 1388.3 | 220.8 | 76.4 | | | | 206.9 | | | 37.1 | 793.1 |
| | | Sayana | 1485.6 | 262.2 | 89.9 | | | | 222.9 | | | 164.5 | 702.2 |
| | | Jahangirabad | 2607.5 | 501.4 | 287.8 | | | | 307.8 | | | 100.8 | 1298.3 |
| | | Khurja | 4108.4 | 1812.4 | 548.6 | | | | 313.1 | | | 334.3 | 823.4 |
| | | Arnia | 3196.6 | 1205.2 | 238.3 | | | | 286.5 | | | 652.7 | 646.6 |
| | | Pahasu | 5245.7 | 1968.8 | 472.1 | | | | 482.9 | | | 541.2 | 1470.1 |
| | | Unchagaon | 1342.1 | 340.4 | 76.4 | | | | 148.6 | | | 100.8 | 621.4 |

| S. No. | District | Block | Total Rice | Pusa-1121 | Pusa Basmati-1 | Type -3 | H B C-19 | Basmati-370 | Pusa-1509 | CSR-30 | Sugandha 2,3&5 | Sharbati | Sugandha |
|--------|------------------------|---------------|----------------|---------------|----------------|---------------|----------|-------------|---------------|-------------|----------------|---------------|---------------|
| | | Danpur | 3596.1 | 1246.6 | 211.3 | | | | 435.1 | | | 408.6 | 1050.8 |
| | | Dibai | 3048.0 | 906.2 | 143.9 | | | | 254.7 | | | 334.3 | 1227.6 |
| | | Anoopshahar | 4041.8 | 943.0 | 278.8 | | | | 429.8 | | | 334.3 | 1874.2 |
| | | Agota | 1296.0 | 395.6 | 224.8 | | | | 143.3 | | | 106.1 | 343.5 |
| 7 | Gaziabad + Hapur | | 26966.0 | 5431.2 | 1400.0 | | | | 2860.0 | | | 3092.3 | 4999.5 |
| | | Rajapura | 3324.4 | 1391.5 | 205.0 | | | | 46.9 | | | 315.7 | 197.0 |
| | | Loni | 1291.2 | 451.4 | 90.0 | | | | 67.7 | | | 80.3 | 146.5 |
| | | Muradnagar | 2396.8 | 888.9 | 145.0 | | | | 114.6 | | | 165.9 | 217.2 |
| | | Bhojpur | 2092.6 | 316.5 | 70.0 | | | | 151.1 | | | 155.2 | 702.0 |
| | | Hapur | 5253.7 | 926.1 | 95.0 | | | | 1172.1 | | | 48.2 | 1267.6 |
| | | Dholana | 4830.7 | 861.0 | 215.0 | | | | 234.4 | | | 1524.8 | 449.5 |
| | | Garh | 4979.1 | 367.7 | 535.0 | | | | 432.4 | | | 700.9 | 1136.3 |
| | | Simbhawali | 2797.5 | 228.0 | 45.0 | | | | 640.8 | | | 101.7 | 883.8 |
| 8 | Meerut | | 16280.0 | 2244.0 | 2332.4 | | | | 2522.8 | 17.5 | | 625.4 | 3192.6 |
| | | Hastinapur | 1937.2 | 66.1 | 497.8 | | | | 90.1 | 4.4 | | 270.3 | 46.0 |
| | | Jani | 1084.1 | 246.9 | 191.1 | | | | 153.7 | 0.0 | | 10.6 | 214.5 |
| | | Mavana | 1776.8 | 330.6 | 164.6 | | | | 291.5 | | | 68.9 | 454.6 |
| | | Paricshitgarh | 2161.7 | 127.9 | 299.9 | | | | 259.7 | 13.1 | | 121.9 | 628.3 |
| | | Meerut | 724.8 | 154.3 | 76.4 | | | | 100.7 | | | 10.6 | 168.6 |
| | | Kharkhonda | 1257.2 | 158.7 | 44.1 | | | | 392.2 | | | 26.5 | 352.5 |
| | | Machhara | 1404.8 | 136.7 | 83.3 | | | | 376.3 | | | 26.5 | 475.1 |
| | | Rohta | 1007.1 | 189.6 | 191.1 | | | | 206.7 | | | 37.1 | 137.9 |
| | | Sardana | 1276.5 | 123.4 | 272.4 | | | | 116.6 | | | 15.9 | 76.6 |
| | | Rajpura | 1122.5 | 171.9 | 63.7 | | | | 227.9 | | | 10.6 | 393.3 |
| | | Dorala | 1225.2 | 260.1 | 240.1 | | | | 132.5 | | | 10.6 | 97.1 |
| | | Saroorpur | 1302.1 | 277.7 | 207.8 | | | | 174.9 | | | 15.9 | 148.1 |
| 9 | Muzzfarnagar + Shamili | | 29785.0 | 4250.4 | 3900.4 | | | | 2541.0 | 56.9 | | 1263.6 | 1989.7 |
| | | M. Nagar | 2169.6 | 197.8 | 201.2 | | | | 299.9 | | | 21.6 | 191.9 |
| | | Bagra | 1705.3 | 179.4 | 260.0 | | | | 184.1 | | | 70.2 | 146.5 |
| | | Sardhawan | 2401.7 | 299.0 | 460.2 | | | | 226.2 | 8.8 | | 75.6 | 60.6 |
| | | Purkaji | 3598.1 | 427.8 | 513.2 | | | | 131.5 | 48.2 | | 437.4 | 75.8 |
| | | Jansath | 1803.5 | 197.8 | 363.1 | | | | 178.9 | | | 75.6 | 166.7 |
| | | Khatoli | 2544.6 | 299.0 | 289.5 | | | | 205.2 | | | 48.6 | 217.2 |
| | | Borda | 1526.7 | 225.4 | 122.7 | | | | 131.5 | | | 48.6 | 96.0 |
| | | Shahpur | 2008.9 | 391.0 | 202.1 | | | | 115.7 | | | 37.8 | 156.6 |
| | | Udana | 1776.7 | 262.2 | 217.8 | | | | 152.6 | | | 21.6 | 126.3 |
| | | Kandla | 1758.9 | 197.8 | 230.6 | | | | 210.4 | | | 59.4 | 186.9 |
| | | Shamli | 1982.1 | 418.6 | 279.7 | | | | 184.1 | | | 43.2 | 96.0 |
| | | Udon | 2044.6 | 418.6 | 230.6 | | | | 121.0 | | | 64.8 | 176.8 |
| | | Kerana | 1830.3 | 170.2 | 309.1 | | | | 205.2 | | | 167.4 | 146.5 |
| | | Thanabhawan | 2633.9 | 565.8 | 220.8 | | | | 194.7 | | | 91.8 | 146.5 |
| 10 | Saharanpur | | 50504.0 | 6942.0 | 11889.9 | 1692.9 | | | 3254.2 | 21.9 | | 7455.0 | 2878.5 |
| | | Baliakheri | 5283.8 | 692.4 | 1569.8 | 148.3 | | | 254.8 | 8.8 | | 824.3 | 156.6 |
| | | Punwarka | 5932.1 | 638.8 | 1495.5 | 123.6 | | | 223.0 | 13.1 | | 834.8 | 3528.5 |
| | | Nakur | 6016.4 | 853.2 | 1857.0 | 123.6 | | | 329.1 | | | 750.8 | 6211.5 |
| | | Sarsawan | 5278.0 | 889.0 | 2084.8 | 0.0 | | | 254.8 | | | 887.3 | 2176.4 |
| | | Gangoh | 5751.0 | 750.5 | 1931.3 | 185.4 | | | 127.4 | | | 540.8 | 1021.4 |

| S. No. | District | Block | Total Rice | Pusa-1121 | Pusa Basmati-1 | Type -3 | H B C-19 | Basmati-370 | Pusa-1509 | CSR-30 | Sugandha 2,3&5 | Sharbati | Sugandha |
|-----------|-------------------|------------------|-----------------|---------------|----------------|---------|----------|-------------|---------------|--------|----------------|----------------|---------------|
| | | Rampur Maniharan | 5549.1 | 701.3 | 1005.3 | 370.7 | | | 329.1 | | | 1060.5 | 6672.9 |
| | | Nanota | 6172.1 | 670.1 | 906.2 | 370.7 | | | 615.8 | | | 687.8 | 3217.1 |
| | | Devband | 2272.7 | 402.0 | 168.4 | 0.0 | | | 366.3 | | | 57.8 | 4191.5 |
| | | Nagal | 3455.2 | 625.4 | 564.5 | 247.1 | | | 366.3 | | | 624.8 | 2358.3 |
| | | Sadholikalan | 2324.6 | 348.4 | 133.7 | 0.0 | | | 196.4 | | | 645.8 | 1650.9 |
| | | Muzzafarabad | 2468.8 | 370.8 | 173.3 | 123.6 | | | 191.1 | | | 540.8 | 2730.9 |
| 11 | Moradabad | | 66504.0 | 931.2 | 297.0 | | | | 2204.8 | | | 9298.8 | 2375.1 |
| | | Billari | 3436.6 | 158.7 | 63.9 | | | | 468.0 | | | 1313.0 | 573.5 |
| | | Moradabad | 4760.8 | 187.6 | 39.3 | | | | 400.4 | | | 1340.0 | 390.8 |
| | | Chhajlet | 3042.6 | 149.1 | 39.3 | | | | 369.2 | | | 189.1 | 289.3 |
| | | Mudapanday | 7923.8 | 62.5 | 31.5 | | | | 145.6 | | | 1350.8 | 197.9 |
| | | Kundarki | 8159.1 | 187.6 | 44.3 | | | | 265.2 | | | 1566.9 | 664.8 |
| | | Thakurdwar | 15300.4 | 94.3 | 44.3 | | | | 223.6 | | | 1096.8 | 147.2 |
| | | Bhagatpur Tandan | 12017.0 | 52.9 | 19.7 | | | | 156.0 | | | 1096.8 | 45.7 |
| | | Dillari | 11863.8 | 38.5 | 14.8 | | | | 176.8 | | | 1345.4 | 66.0 |
| 12 | Bijnore | | 43714.5 | 1474.2 | 3118.5 | | | | 2268.0 | | | 18072.3 | 1340.0 |
| | | Mohamadpur | 3001.0 | 68.5 | 207.8 | | | | 215.3 | | | 1193.8 | 120.0 |
| | | Devmal Haldore | 3208.2 | 100.4 | 242.5 | | | | 110.3 | | | 1514.9 | 110.0 |
| | | Nurpur | 3508.3 | 105.0 | 272.2 | | | | 120.8 | | | 1729.1 | 110.0 |
| | | Jalilpur | 4308.6 | 59.3 | 282.1 | | | | 204.8 | | | 1771.9 | 125.0 |
| | | Dhampur | 2679.5 | 100.4 | 183.1 | | | | 147.0 | | | 1204.5 | 105.0 |
| | | Chuhara | 2922.4 | 77.6 | 196.0 | | | | 120.8 | | | 1557.8 | 75.0 |
| | | Mehtore | 2829.5 | 82.2 | 193.0 | | | | 110.3 | | | 1482.8 | 105.0 |
| | | Afjalgarh | 4265.7 | 141.5 | 351.3 | | | | 535.5 | | | 1761.2 | 85.0 |
| | | Kotwali | 6830.8 | 260.2 | 572.0 | | | | 357.0 | | | 1697.0 | 205.0 |
| | | Najibabad | 7223.8 | 314.9 | 579.0 | | | | 225.8 | | | 2719.4 | 105.0 |
| | | Keeratpur | 2936.7 | 164.3 | 39.6 | | | | 120.8 | | | 1440.0 | 195.0 |
| 13 | Rampur | | 112404.0 | 652.8 | 138.6 | | | | 1203.6 | | | 23971.5 | 191.9 |
| | | Subar | 20199.2 | 91.9 | 34.7 | | | | 158.1 | | | 4332.2 | 40.4 |
| | | Vilaspur | 20098.7 | 140.2 | 39.6 | | | | 219.3 | | | 3313.5 | 30.3 |
| | | Shayatnagar | 17765.1 | 53.2 | 9.9 | | | | 198.9 | | | 2326.3 | 25.3 |
| | | Chabraoa | 16034.2 | 82.2 | 14.9 | | | | 219.3 | | | 3628.5 | 40.4 |
| | | Shahabad | 17312.9 | 149.9 | 14.9 | | | | 188.7 | | | 4468.7 | 40.4 |
| | | Milakh | 20993.8 | 135.4 | 24.8 | | | | 219.3 | | | 5902.3 | 15.2 |
| 14 | J.P. Nagar | | 15974.0 | 1152.0 | 960.3 | | | | 1998.2 | | | 7233.2 | 2757.3 |
| | | Amroha | 2728.4 | 183.2 | 108.9 | | | | 365.7 | | | 626.0 | 439.4 |
| | | Joya | 2518.9 | 159.1 | 64.4 | | | | 561.4 | | | 1086.1 | 570.7 |
| | | Dhanora | 2869.6 | 245.8 | 311.9 | | | | 360.5 | | | 1203.8 | 459.6 |
| | | Gajrola | 2924.2 | 269.9 | 138.6 | | | | 273.0 | | | 1342.9 | 580.8 |
| | | Hasanpur | 2313.9 | 106.0 | 183.2 | | | | 221.5 | | | 1278.7 | 444.4 |
| | | Gangeshwani | 2619.1 | 188.0 | 153.5 | | | | 216.3 | | | 1696.0 | 262.6 |
| 15 | Pilibhit | | 152500.0 | 827.2 | 158.4 | | | | 3429.9 | | | 5406.0 | 377.4 |
| | | Nurori | 15849.4 | 115.1 | 13.2 | | | | 237.3 | | | 578.8 | 43.5 |

| S. No. | District | Block | Total Rice | Pusa-1121 | Pusa Basmati-1 | Type -3 | H B C-19 | Basm ati-370 | Pusa-1509 | CSR-30 | Sugan dha 2,3&5 | Sharb ati | Sugan dha |
|-----------|-----------------|-------------------|-----------------|---------------|----------------|---------|----------|--------------|---------------|---------------|-----------------|----------------|---------------|
| | | Lalorikhera | 8834.4 | 107.9 | 33.0 | | | | 204.9 | | | 782.3 | 21.8 |
| | | Amaria | 22348.8 | 115.1 | 13.2 | | | | 399.1 | | | 305.3 | 58.1 |
| | | Badkhera | 12205.6 | 79.1 | 39.6 | | | | 420.6 | | | 540.6 | 58.1 |
| | | Beejalpur | 13633.3 | 57.5 | 33.0 | | | | 399.1 | | | 833.2 | 79.8 |
| | | Bilsanda | 18298.4 | 129.5 | 13.2 | | | | 593.2 | | | 941.3 | 58.1 |
| | | Puranpur | 61330.2 | 223.0 | 13.2 | | | | 1175.7 | | | 1424.6 | 58.1 |
| 16 | Agra | | 3956.5 | 319.2 | 72.0 | | | | 483.0 | | | 0.0 | 2181.6 |
| | | Achhnera | 2314.8 | 123.4 | 31.5 | | | | 228.2 | | | 0.0 | 1331.2 |
| | | Atmadpur | 311.9 | 46.8 | 18.0 | | | | 47.8 | | | 0.0 | 156.9 |
| | | Fetehpur Sikri | 1329.8 | 149.0 | 22.5 | | | | 207.0 | | | 0.0 | 693.5 |
| 17 | Bareilly | | 150084.0 | 1244.5 | 465.3 | | | | 665.6 | 595.7 | | 46375.0 | 494.9 |
| | | Khyora | 5186.4 | 85.8 | 29.6 | | | | 10.4 | 8.8 | | 1669.5 | 45.5 |
| | | Bitlichainpur | 11742.3 | 57.2 | 29.6 | | | | 57.4 | 21.9 | | 2082.9 | 40.4 |
| | | Bhojipur | 9082.4 | 42.9 | 9.9 | | | | 46.9 | 35.0 | | 2920.3 | 35.4 |
| | | Fatehganj | 5913.2 | 23.8 | 14.8 | | | | 88.7 | 48.2 | | 768.5 | 25.3 |
| | | Meerganj | 6501.5 | 81.1 | 14.8 | | | | 46.9 | 8.8 | | 2098.8 | 25.3 |
| | | Fareedpur | 11327.0 | 57.2 | 54.2 | | | | 67.8 | 21.9 | | 2268.4 | 35.4 |
| | | Bhutha | 12315.8 | 76.3 | 44.4 | | | | 57.4 | 48.2 | | 2453.9 | 40.4 |
| | | Nababganj | 13799.1 | 71.5 | 34.5 | | | | 62.6 | 74.5 | | 4372.5 | 25.3 |
| | | Bhairpura | 9675.7 | 166.9 | 34.5 | | | | 57.4 | 35.0 | | 4086.3 | 25.3 |
| | | Bahedi | 13957.3 | 66.8 | 39.4 | | | | 26.1 | 35.0 | | 4218.8 | 30.3 |
| | | Damekhoda | 10634.8 | 90.6 | 41.4 | | | | 36.5 | 65.7 | | 3662.3 | 45.5 |
| | | SeeshGarh | 9438.3 | 109.7 | 54.2 | | | | 26.1 | 48.2 | | 4086.3 | 40.4 |
| | | Alampur | 12711.4 | 147.8 | 24.6 | | | | 20.9 | 74.5 | | 4467.9 | 10.1 |
| | | Jafrabad | 9141.7 | 104.9 | 14.8 | | | | 57.4 | 39.4 | | 4192.3 | 35.4 |
| | | Majhagwa | 8657.2 | 62.0 | 24.6 | | | | 3.1 | 30.7 | | 3026.3 | 35.4 |
| 18 | Badaun | | 47800.0 | 1919.0 | 742.5 | | | | 2069.6 | 8301.9 | | 20753.7 | 1969.5 |
| | | Badaun | 2077.0 | 61.9 | 39.6 | | | | 36.1 | 48.2 | | 935.7 | 65.7 |
| | | Asabpur | 1868.2 | 185.7 | 9.9 | | | | 56.8 | 83.2 | | 1040.3 | 111.1 |
| | | Islamnagar Bisoli | 2139.1 | 61.9 | 39.6 | | | | 191.0 | 131.4 | | 1301.7 | 75.8 |
| | | Bajirganj | 1721.5 | 52.4 | 24.8 | | | | 113.5 | 188.3 | | 893.9 | 55.6 |
| | | Dangawan | 1602.9 | 47.6 | 24.8 | | | | 87.7 | 162.1 | | 1029.8 | 75.8 |
| | | Sahswan | 3335.7 | 61.9 | 24.8 | | | | 160.0 | 275.9 | | 1615.3 | 156.6 |
| | | Auiyapur | 2771.3 | 42.9 | 24.8 | | | | 113.5 | 188.3 | | 1552.6 | 65.7 |
| | | Salarpur | 3623.5 | 147.6 | 29.7 | | | | 263.2 | 834.0 | | 1301.7 | 247.5 |
| | | Jagat | 3211.5 | 90.5 | 34.7 | | | | 160.0 | 337.3 | | 1610.1 | 156.6 |
| | | Ujhiani | 2872.9 | 176.2 | 54.5 | | | | 180.6 | 275.9 | | 1343.5 | 146.5 |
| | | Kodarchock | 3109.9 | 176.2 | 44.6 | | | | 144.5 | 661.4 | | 1301.7 | 141.4 |
| | | Samred | 5655.4 | 323.8 | 108.9 | | | | 113.5 | 1940.3 | | 1730.3 | 217.2 |
| | | Dataganj | 5367.6 | 147.6 | 89.1 | | | | 263.2 | 1738.9 | | 1678.1 | 272.7 |
| | | Mayaoo | 5107.9 | 176.2 | 54.5 | | | | 87.7 | 862.9 | | 2075.4 | 85.9 |
| | | Usava | 3335.7 | 166.7 | 138.6 | | | | 98.1 | 573.8 | | 1343.5 | 96.0 |
| 19 | Kannauj | | 12322.0 | 630.5 | 158.4 | | | | 1407.6 | | | 136.5 | 1424.1 |
| | | Chhibramau | 1933.6 | 53.4 | 12.7 | | | | 87.0 | | | 10.5 | 116.6 |
| | | Talgram | 1532.1 | 87.3 | 12.7 | | | | 153.6 | | | 31.5 | 248.3 |
| | | Sorikh | 2143.1 | 38.8 | 57.0 | | | | 220.1 | | | 15.8 | 446.0 |
| | | Haseran | 2256.6 | 189.2 | 19.0 | | | | 363.4 | | | 10.5 | 288.9 |
| | | Jalalabad | 336.1 | 72.8 | 6.3 | | | | 56.3 | | | 15.8 | 40.5 |

| S. No. | District | Block | Total Rice | Pusa-1121 | Pusa Basmati-1 | Type -3 | H B C-19 | Basm ati-370 | Pusa-1509 | CSR-30 | Sugan dha 2,3&5 | Sharb ati | Sugan dha |
|-----------|--------------------|--------------|----------------|----------------|----------------|---------|----------|--------------|---------------|--------|-----------------|--------------|---------------|
| | | Kakor | 1728.5 | 63.1 | 25.3 | | | | 179.1 | | | 31.5 | 187.5 |
| | | Umardha | 2029.7 | 82.5 | 12.7 | | | | 250.8 | | | 10.5 | 55.7 |
| | | Jugrajpur | 362.3 | 43.7 | 12.7 | | | | 97.3 | | | 10.5 | 40.5 |
| 20 | Firozabad | | 12524.0 | 2260.1 | 237.6 | | | | 1305.6 | | | 124.2 | 5322.7 |
| | | Tundla | 219.6 | 43.7 | 10.1 | | | | 87.0 | | | 10.4 | 70.7 |
| | | Narkhi | 358.3 | 43.7 | 10.1 | | | | 66.6 | | | 10.4 | 141.4 |
| | | Shikohabad | 2045.6 | 345.1 | 15.2 | | | | 189.4 | | | 20.7 | 1065.6 |
| | | Madanpur | 2045.6 | 306.2 | 15.2 | | | | 112.6 | | | 25.9 | 1136.3 |
| | | Araon | 1348.3 | 179.8 | 50.6 | | | | 291.8 | | | 15.5 | 661.6 |
| | | Jasrana | 4719.1 | 1093.6 | 70.8 | | | | 363.5 | | | 25.9 | 1429.2 |
| | | Hathbant | 150.2 | 19.4 | 5.1 | | | | 46.1 | | | 15.5 | 45.5 |
| | | Eka | 1637.3 | 228.4 | 60.7 | | | | 148.5 | | | 0.0 | 772.7 |
| 21 | Mathura | | 35717.0 | 22831.9 | 1049.4 | | | | 3433.5 | | | 275.6 | 3423.9 |
| | | Mathura | 3988.4 | 3044.6 | 39.6 | | | | 330.8 | | | 42.9 | 156.8 |
| | | Govardhan | 4471.9 | 3172.0 | 212.9 | | | | 225.8 | | | 12.2 | 187.1 |
| | | Nand Gaon | 4979.5 | 3172.0 | 94.1 | | | | 472.5 | | | 24.5 | 101.1 |
| | | Chhata | 7870.5 | 4742.0 | 306.9 | | | | 787.5 | | | 12.2 | 242.8 |
| | | Chomuha | 3824.1 | 2716.9 | 123.8 | | | | 456.8 | | | 6.1 | 202.3 |
| | | Farah | 1469.7 | 468.7 | 24.8 | | | | 299.3 | | | 49.0 | 576.6 |
| | | Baldev | 981.4 | 350.4 | 34.7 | | | | 141.8 | | | 49.0 | 343.9 |
| | | Raya | 1049.1 | 277.6 | 39.6 | | | | 204.8 | | | 18.4 | 531.0 |
| | | Manth | 3007.0 | 1597.4 | 84.2 | | | | 367.5 | | | 12.2 | 763.7 |
| | | Navjhil | 4075.5 | 3290.3 | 89.1 | | | | 147.0 | | | 49.0 | 318.6 |
| 22 | Mainpuri | | 48042.0 | 15475.2 | 202.0 | | | | 2464.8 | | | 156.0 | 5970.0 |
| | | Kurawali | 2372.9 | 686.4 | 5.1 | | | | 203.2 | | | 5.2 | 415.3 |
| | | Ghiroor | 6899.2 | 1872.0 | 15.2 | | | | 364.8 | | | 20.8 | 985.8 |
| | | Sultanganj | 3344.5 | 1396.8 | 40.4 | | | | 401.2 | | | 31.2 | 640.5 |
| | | Bebar | 3036.2 | 763.2 | 20.2 | | | | 255.3 | | | 36.4 | 525.4 |
| | | Kishani | 8179.1 | 1454.4 | 40.4 | | | | 469.0 | | | 20.8 | 955.8 |
| | | Mainpuri | 11168.5 | 3988.8 | 60.6 | | | | 359.6 | | | 10.4 | 1256.1 |
| | | Jageer | 11350.7 | 4656.0 | 10.1 | | | | 255.3 | | | 20.8 | 765.6 |
| | | Karahal | 1690.9 | 657.6 | 10.1 | | | | 156.3 | | | 10.4 | 425.4 |
| | | Barnahal | | | | | | | | | | | |
| 23 | Etawah | | 40602.0 | 6203.4 | 158.4 | | | | 2565.4 | | | 62.1 | 4585.4 |
| | | Saifai | 7537.5 | 877.1 | 13.8 | | | | 247.9 | | | 11.3 | 545.4 |
| | | Jaswantnagar | 5025.0 | 553.7 | 41.3 | | | | 592.0 | | | 22.6 | 681.8 |
| | | Badpura | 1036.7 | 289.1 | 34.4 | | | | 141.7 | | | 5.6 | 136.4 |
| | | Basrehar | 6712.3 | 994.7 | 27.5 | | | | 349.1 | | | 0.0 | 489.9 |
| | | Bhartana | 9034.4 | 935.9 | 13.8 | | | | 354.2 | | | 0.0 | 772.7 |
| | | Takha | 6950.4 | 1519.0 | 13.8 | | | | 546.5 | | | 11.3 | 1252.4 |
| | | Maheva | 4189.3 | 1019.2 | 6.9 | | | | 318.8 | | | 5.6 | 691.9 |
| | | Chakarnagar | 116.4 | 14.7 | 6.9 | | | | 15.2 | | | 5.6 | 15.2 |
| 24 | Farrukhabad | | 11322.0 | 1748.0 | 59.4 | | | | 854.9 | | | 136.5 | 2385.3 |
| | | Badpura | 1269.9 | 14.3 | 0.0 | | | | 36.4 | | | 15.8 | 177.6 |
| | | Rajepur | 1328.8 | 38.1 | 10.8 | | | | 57.3 | | | 36.8 | 314.7 |
| | | Kamalganj | 1805.7 | 33.3 | 5.4 | | | | 130.2 | | | 42.0 | 421.2 |
| | | Mohamdabad | 1591.4 | 28.6 | 21.6 | | | | 223.9 | | | 5.3 | 603.9 |
| | | Nababganj | 1875.4 | 23.8 | 16.2 | | | | 203.1 | | | 31.5 | 360.3 |

| S. No. | District | Block | Total Rice | Pusa-1121 | Pusa Basmati-1 | Type -3 | H B C-19 | Basmati-370 | Pusa-1509 | CSR-30 | Sugandha 2,3&5 | Sharbati | Sugandha |
|-----------|---------------------|---------------|------------------|-----------------|----------------|---------------|------------|-------------|----------------|----------------|----------------|-----------------|----------------|
| | | Shamshabad | 1655.7 | 14.3 | 0.0 | | | | 192.6 | | | 0.0 | 319.7 |
| | | Kayamganj | 1795.0 | 1595.6 | 5.4 | | | | 11.5 | | | 5.3 | 187.8 |
| 25 | Auriya | | 44945.0 | 1030.4 | 49.5 | | | | 164.8 | 586.9 | | 1754.4 | 190.0 |
| | | Auriya | 6004.7 | 138.0 | 0.0 | | | | 15.9 | 4.4 | | 168.8 | 35.0 |
| | | Ajitmal | 6103.0 | 78.2 | 11.0 | | | | 21.3 | 13.1 | | 393.8 | 40.0 |
| | | Bhagwantnagar | 7665.7 | 165.6 | 22.0 | | | | 53.2 | 258.4 | | 526.8 | 35.0 |
| | | Bidhuna | 7884.2 | 193.2 | 0.0 | | | | 26.6 | 249.7 | | 301.8 | 25.0 |
| | | Achalda | 4868.2 | 78.2 | 5.5 | | | | 42.5 | 26.3 | | 102.3 | 0.0 |
| | | Sahar | 5698.7 | 289.8 | 0.0 | | | | 5.3 | 21.9 | | 92.1 | 15.0 |
| | | Aerwakra | 6720.4 | 87.4 | 11.0 | | | | 0.0 | 13.1 | | 168.8 | 40.0 |
| 26 | Shahjahanpur | | 197051.0 | 1532.2 | 267.3 | | | | 840.0 | 1493.6 | | 8688.4 | 426.3 |
| | | Banda | 20387.9 | 94.3 | 24.8 | | | | 58.1 | 65.7 | | 766.5 | 0.0 |
| | | Khutar | 10909.6 | 89.6 | 0.0 | | | | 52.8 | 26.3 | | 664.6 | 0.0 |
| | | Puvahya | 17150.9 | 174.4 | 24.8 | | | | 42.3 | 83.2 | | 873.7 | 20.2 |
| | | Sindholi | 18465.9 | 94.3 | 39.6 | | | | 37.0 | 83.2 | | 873.7 | 55.6 |
| | | Khudaganj | 14824.3 | 75.4 | 9.9 | | | | 58.1 | 118.3 | | 670.0 | 20.2 |
| | | Jaitipur | 10646.6 | 80.1 | 0.0 | | | | 42.3 | 118.3 | | 852.2 | 10.1 |
| | | Tilhar | 9898.1 | 33.0 | 9.9 | | | | 37.0 | 48.2 | | 305.5 | 30.3 |
| | | Nigohi | 11496.3 | 141.4 | 9.9 | | | | 37.0 | 74.5 | | 380.6 | 20.2 |
| | | Kanth | 11243.4 | 51.9 | 5.0 | | | | 42.3 | 74.5 | | 32.2 | 35.4 |
| | | Dadrol | 11142.3 | 61.3 | 19.8 | | | | 58.1 | 52.6 | | 519.9 | 32.3 |
| | | Bhaavalkheda | 10459.5 | 61.3 | 14.9 | | | | 89.8 | 109.5 | | 487.8 | 40.4 |
| | | Clan | 13307.0 | 231.0 | 19.8 | | | | 110.9 | 249.7 | | 734.3 | 40.4 |
| | | Mirjapur | 9898.1 | 132.0 | 29.7 | | | | 47.5 | 184.0 | | 455.6 | 50.5 |
| | | Jalalabad | 11688.5 | 108.4 | 29.7 | | | | 100.4 | 61.3 | | 766.5 | 30.3 |
| | | Madanpur | 15532.4 | 103.7 | 29.7 | | | | 26.4 | 144.5 | | 305.5 | 40.4 |
| 27 | Sambhal | | 28458.0 | 1444.4 | 396.0 | | | | 1736.8 | 17.5 | | 8533.0 | 4393.5 |
| | | Junamai | 2184.0 | 170.2 | 34.7 | | | | 88.4 | | | 832.1 | 419.6 |
| | | Gunnour | 1959.7 | 115.0 | 19.8 | | | | 88.4 | | | 784.4 | 389.3 |
| | | Rajpura | 1788.1 | 151.8 | 29.7 | | | | 98.8 | | | 726.1 | 268.0 |
| | | Baniakhera | 5212.6 | 170.2 | 64.4 | | | | 244.4 | | | 1605.9 | 399.4 |
| | | Bahjoi | 3107.7 | 142.6 | 39.6 | | | | 327.6 | | | 620.1 | 328.6 |
| | | Sambhal | 5615.1 | 262.2 | 79.2 | | | | 327.6 | | | 1653.6 | 1264.0 |
| | | Pawansa | 2316.0 | 105.8 | 29.7 | | | | 192.4 | | | 768.5 | 359.0 |
| | | Asmoli | 6274.9 | 326.6 | 99.0 | | | | 369.2 | | | 1542.3 | 965.7 |
| | Total | | 133619.15 | 14490.83 | 42837.5 | 1692.9 | 0.0 | 0.0 | 5595.03 | 11140.1 | 0.0 | 17356.09 | 91719.6 |

Block wise and Variety wise acreage under total rice and Basmati + Scented varieties in U.K (2017)

| Sl. No. | District | Block | Total Rice | Basmati varieties | | | | | | | Long Grain Non-Basmati |
|----------|------------------|---------------|---------------|-------------------|----------------|-------------|------------|-------------|-------------|-------------------|------------------------|
| | | | | Pusa Basmati-1121 | Pusa Basmati-1 | Type-3 | HBC-19 | CSR-30 | Basmati-370 | Pusa Basmati-1509 | |
| 1 | Haridwar | | 14342 | 1408 | 2156.00 | 176 | 428 | 907 | 799 | 505 | 3731.476 |
| | | Bahadurabad | 3650 | 416 | 456 | 53.9 | 259.7 | 249.9 | 225.4 | 101 | 906 |
| | | Narsan | 1871 | 174 | 316 | 0 | 39.2 | 122.5 | 34.3 | 83 | 297 |
| | | Rurki | 2490 | 255 | 286 | 24.5 | 31.36 | 151.9 | 63.7 | 64 | 609 |
| | | Lakshar | 1768 | 264 | 356 | 58.8 | 34.3 | 39.2 | 63.7 | 64 | 432 |
| | | Khanpur | 2284 | 107 | 356 | 9.8 | 39.2 | 308.7 | 377.3 | 101 | 422 |
| | | Bhagwanpur | 2279 | 192 | 386 | 29.4 | 24.5 | 34.3 | 34.3 | 92 | 1067 |
| 2 | Dehradun | | 7474 | 328 | 0 | 1725 | 0 | 519 | 402 | 202 | 2474.5 |
| | | Doibala | 1796 | 127 | 0 | 387 | 0 | 83 | 0 | 84 | 731 |
| | | Raypur | 519 | 0 | 0 | 132 | 0 | 183 | 0 | 51 | 66 |
| | | Sahjpur | 1769 | 87 | 0 | 348 | 0 | 1818 | 0 | 34 | 721 |
| | | Vikash Nagar | 1833 | 100 | 0 | 534 | 0 | 519 | 0 | 34 | 711 |
| | | Kalasi | 831 | 13 | 0 | 162 | 0 | 470 | 0 | 0 | 156 |
| | | Chackrata | 726 | 0 | 0 | 162 | 0 | 601 | 0 | 0 | 91 |
| 3 | U S Nagar | | 100293 | 1520 | 117.6 | 62 | 353 | 152 | 146 | 1522.5 | 7486.5 |
| | | Khatima Sitar | 15546 | 94 | 0 | 0 | 14 | 0 | 0 | 111 | 588 |
| | | Ganj | 17366 | 59 | 0 | 10 | 10 | 0 | 0 | 121 | 467 |
| | | Bajpur | 15006 | 195 | 0 | 0 | 0 | 0 | 24 | 329 | 1028 |
| | | Rudrapur | 14378 | 400 | 26 | 11 | 11 | 109 | 13 | 253 | 1338 |
| | | Jaspur | 12884 | 176 | 46 | 24 | 48 | 43 | 33 | 268 | 1521 |
| | | Kashipur | 11321 | 269 | 0 | 10 | 33 | 0 | 76 | 313 | 1102 |
| | | Gadarpur | 13792 | 328 | 46 | 8 | 238 | 0 | 0 | 127 | 1443 |
| 4 | Nainital | | 8585 | 282 | 0.00 | 573 | 0 | 245 | 39 | 303 | 1414 |
| | | Betalghat | 358 | 0 | 0 | 0 | 0 | 0 | 0 | 0 | 116 |
| | | Bhimtal | 307 | 0 | 0 | 0 | 0 | 0 | 0 | 0 | 70 |
| | | Dhari | 40 | 0 | 0 | 0 | 0 | 0 | 0 | 0 | 0 |
| | | Ramgarh | 199 | 0 | 0 | 0 | 0 | 0 | 0 | 0 | 0 |
| | | Okhalgola | 358 | 0 | 0 | 0 | 0 | 0 | 0 | 0 | 0 |
| | | Haldwani | 2728 | 108 | 0 | 294 | 0 | 147 | 25 | 135 | 556 |
| | | Ram Nagar | 2465 | 145 | 0 | 279 | 0 | 98 | 15 | 168 | 672 |
| | | Kotabag | 2130 | 29 | 0 | 0 | 0 | 0 | 0 | 0 | 0 |
| | Total | | 130694 | 3538 | 2274 | 2536 | 782 | 1823 | 1386 | 2533 | 15106 |

Block wise and Variety wise acreage under total rice and Basmati + Scented varieties in J.K (2017)

| Sl. No. | District | Block | Total Rice | Pusa Basmati-1121 | Basmati-370 | Sharbati |
|----------|--------------|-----------|--------------|-------------------|-------------|----------|
| 1 | Jammu | | 85000 | 1358 | | |
| | | Akhnoor | 0 | 0 | 47203 | 9129 |
| | | Balwal | 0 | 0 | 9257 | 3060 |
| | | Bishnah | 0 | 1314 | 1114 | 153 |
| | | Marh | 0 | 0 | 2129 | 1938 |
| | | R.S. Pura | 0 | 44 | 4208 | 255 |
| | | Satwari | 0 | 0 | 21782 | 2856 |
| | | | 0 | 0 | 8713 | 867 |

| Sl. No. | District | Block | Total Rice | Pusa Basmati-1121 | Basmati-370 | Sharbati |
|----------|---------------|--------------------|---------------|-------------------|--------------|--------------|
| 2 | Kathua | | 42000 | 6272 | 3762 | 744.6 |
| | | Kathua | 0 | 2744 | 1485 | 230 |
| | | Hiranagar | 0 | 2303 | 1634 | 357 |
| | | Barnoti | 0 | 1225 | 644 | 158 |
| 3 | Samba | | 12000 | 582 | 2099 | 275 |
| | | Samba & Rehian | 0 | 340 | 495 | 68 |
| | | Vijaypur & Ramgarh | 0 | 243 | 1139 | 104 |
| | | Purumandal & Yakh | 0 | 0 | 119 | 0 |
| | | Gaghwal | 0 | 0 | 347 | 104 |
| | Total | | 139000 | 8212 | 53064 | 10149 |

Methodology

- We have done the complete study based on field based survey
- We have deputed the field teams in targeted 7 states which conducted the farmer interviews in around 78 districts of total 81 districts
- We have done questionnaires' based farmer survey and taken farmers pictures along with actual survey days newspapers. We tagged the farmer pictures through geo-tagging wherever possible by the field team
- To vet the complete study, we have also taken assistance from satellite images and tele-calling so that complete perspective can be taken into considerations while arriving the results of the study
- To further validate the results, we have also taken the last year's figures from the previous reports, so that survey results error has to be minimized and actual figures can be achieved in the study

Way Forward

- Survey teams will be continuously in the field throughout the survey and report on crop progress, so that subsequent reports will be presented in the more meaning & timely manner
- Next report will focus on Mandi arrival pace / crop production / crop cutting experiments / price trends / any infestation or losses if any
- Any changes as reported from the field on current thoughts
- Next report will be presented during November 2017,

Data Source

- All figures based on farmer interview and feedback for current year
- Last year dataset from previously submitted reports
- Prices are taken from independent price pooling exercise from last Dec 2016 onwards
- Monsoon data was collected from IMD & other meteorological departments