

REPORT - 3

October 21th, 2018

Basmati Acreage & Yield Estimation in Punjab, Haryana, Delhi, Uttarakhand,
Himachal Pradesh, Western Uttar Pradesh and Parts of Jammu & Kashmir

Basmati Export Development Foundation
APEDA, New Delhi



Basmati Survey - Report-3 (Season 2018)

This is the 3rd report for Basmati crop across 7 states totalling 81 districts. Detailed microscopic level information has been collected and compiled in this report. The report begins with an overview of the entire scenario of Basmati crop for the current season and then goes on to provide details of crop health, harvest pace, mandi arrival, price trends along with other details like acreage / production w.r.t block-wise/district-wise/ state-wise.

Geotrans Technologies Pvt. Ltd.

Contents

Acknowledgement	3
Chapter 1.....	4
Executive Summary	4
State Wise Transplanted Area, Production.....	6
Haryana	8
Punjab	9
Uttar Pradesh	10
Uttarakhand	11
Jammu & Kashmir	11
Himachal Pradesh	11
State-Mandi wise arrival/prices.....	12
Exports of Basmati rice	15
All India Rice price trends in major markets	16
Chapter 2.....	18
Project Background	18
Chapter-3	22
District Wise Basmati Acreage Details	22
Chapter-4	31
District Wise Basmati Production Details (ALL FIGURES IN LAC TONS)	31
Haryana	31
Punjab	32
Uttar Pradesh	33
Uttarakhand	34
Jammu & Kashmir	34
Himachal Pradesh	34
Chapter- 5	35
Block-wise variety wise details	35
Methodology.....	48
Way Forward.....	48
Data Source	48

Acknowledgement

We are thankful to the Chairman, Agricultural and Processed Food Products Export Development Authority (APEDA) -Shri. Paban Kumar Borthakur and the Director, Basmati Export Development Foundation (BEDF)- Mr. A. K. Gupta, for assigning the work and being a force behind the basmati field study.

We are grateful to Mr. Vijay Setia, President, All India Rice Exporters' Association (AIREA) and Hon'ble Exporter Members of AIREA for cooperating in the field survey.

We would like to thank Mr. Vinod Kaul, Director, AIREA and his complete team for providing the details on various aspects of farms/ farmers/ acreage and other relevant historical details for completing this survey.

The scientific team of Geotrans would like to thank all the farmers, traders, exporters, agriculture input dealers and others who participated in this survey programme and supported our field team. We expect that all stakeholders extend similar kind of support in subsequent reports for successful completion of project in time bound manner

TEAM GEOTRANS

Geotrans Technologies Pvt. Ltd.

Executive Summary

Scope of the Report

The present report being the report for Kharif 2018 covers the results of field survey-based acreage/ production estimation reporting of Basmati varieties area transplanted in the different districts of Punjab, Haryana, Delhi, Uttar Pradesh, Uttarakhand, Himachal Pradesh and Jammu & Kashmir. This time we have focused on basmati crop fields & mandis across states for gathering the details on crop health; impact of rainfall; pest infestation; harvest pace; mandi arrivals; price trends and farmer expectation on crop selling. As we move further in the harvest season, we will give more insights on the realized yields and the clearer picture will immerse on the production/ arrival/ prices of basmati crop/ rice prices monitor etc. This report primarily covers the crop acreage / production estimates / initial information on prices / harvest pace etc to give glimpses on how basmati crop harvest pace has been happening along with quantity & quality of crop mandi arrivals.

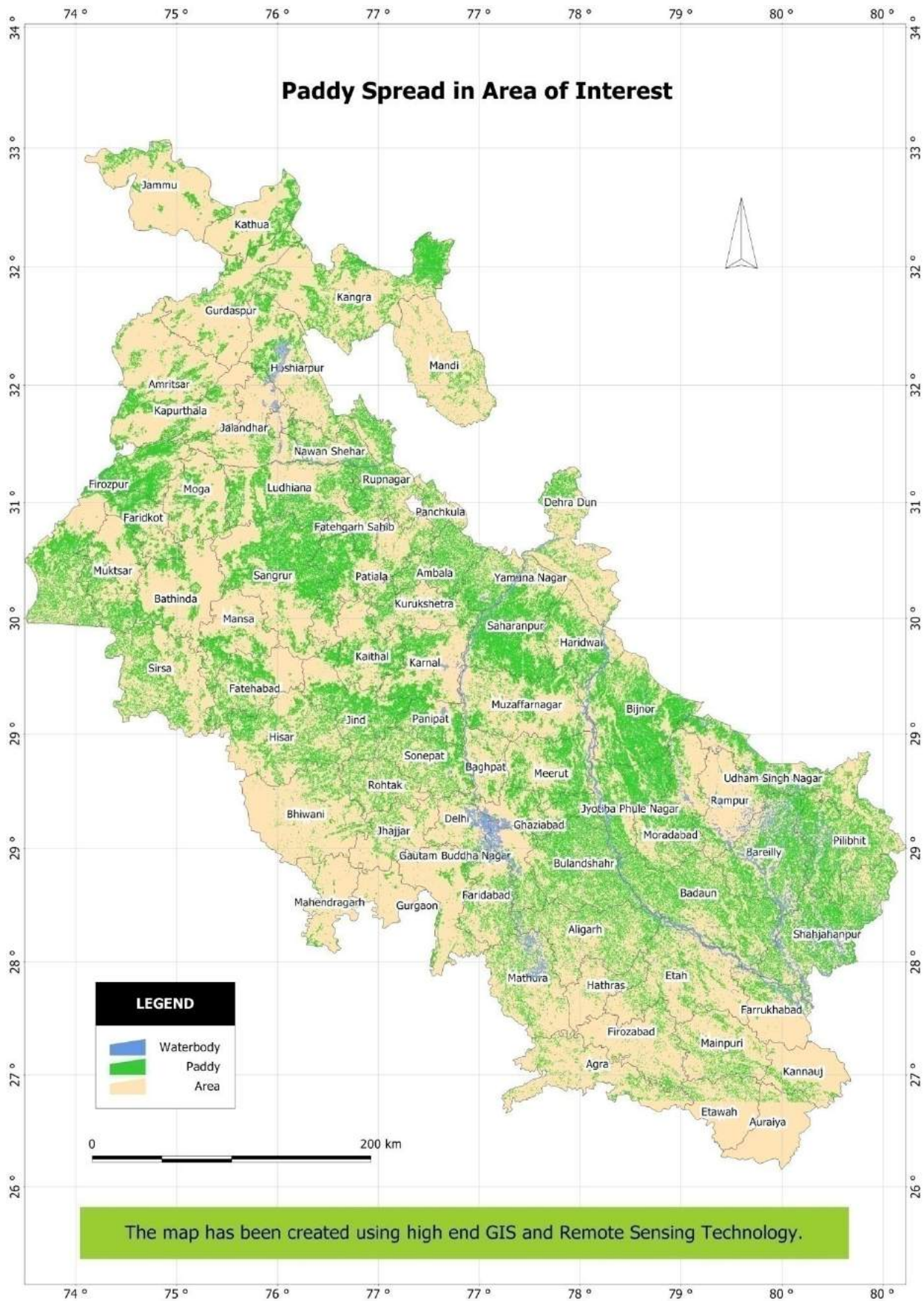
Study districts

The study has been conducted in 79 districts, which includes 22 districts of Punjab, 21 districts of Haryana, 27 districts of Uttar Pradesh, 4 districts of Uttarakhand, 2 districts of Himachal Pradesh and 3 districts of Jammu & Kashmir and findings were elaborated in form of tables / text and pictures.

Rice Acreage

This year the total rice transplanted area in India has decreased by 2.54% i.e. from 39,396,000 ha to 38,485,000ha in the kharif 2018-19 season. The total rice crop in the studied 7 states & 81 districts has been decreased to 1.19% in the kharif 2018-19 season. While the basmati acreage in the studied area has been reduced by 2.48% as compared to last year. The % area occupied by Basmati has reduced in major states of Haryana and Punjab by 2.87% and 2.67% respectively. In U.P. the area under Basmati has decreased around five thousand ha, whereas, the area under other Long Grain Non-Basmati (Sharbati& Sugandha) rice is almost similar as compared to last year i.e. acreage in 2018-19 reported to 304,482 ha from 302,818.

In Punjab, the rice transplanting has been 3042,000 ha in 22 districts this year. Sangrur district has the largest area under rice (2,81,606 ha), followed by Ludhiana district (2,62,220 ha). The area under Basmati variety Pusa Basmati-1121 has reduced this year by 3.48% in comparison to last year. The area under Pusa Basmati-1509 has significantly increased from 39,500 ha. to 41,087ha in comparison to last year as the farmers got shifted to PB 1509 from PB 1121. Farmers realized yields & higher return on PB 1509 along with shorter duration makes PB 1509 as preferred choice over PB 1121.



In Haryana, the total rice acreage based on field survey has been estimated at 1328,948 ha in 20 districts. Karnal district has the highest transplanted area under rice (1,66,619 ha), followed by Kaithal district (1,64,542ha). Overall Basmati area has reduced by 2.8% in comparison to last year. This year farmers also preferred normal paddy over basmati crop due to higher MSP declared by central govt. just before the basmati crop sowing.

In Uttar Pradesh, timely onset of monsoon, rice transplanting was started in time and continued in full swing during July. A total of 1,336,180 ha. rice acreage based on field survey has been estimated as transplanted in the 27 districts of the state. Shahjahanpur district has the largest total rice area (1,97,049 ha), followed by Pilibhit (1,52,499 ha) and in districts like Muzaffarnagar, Bagpat, Meerut, many farmers have sown sugarcane replacing Basmati speculating higher sugarcane state advised prices from the state Govt and good payments from sugar mills of the state. This year farmers also preferred normal paddy over basmati crop due to higher MSP declared by central govt. just before the basmati crop sowing.

In Uttarakhand, A total of 130,000 ha rice acreage has been estimated as transplanted in the 4 districts. Udham Singh Nagar district has the largest area under rice (99,000 ha). This year overall basmati crop has been reduced to 1.5 % across state while in certain major districts basmati acreage has been reduced upto 5%-7%.

In Jammu & Kashmir, three districts have been taken up for the study. The total rice area is estimated to be 136,609 ha. in these districts. Jammu & Samba have an area of 95,332 ha. and Kathua only 41,278 ha. The state has received excess rainfall this year. Area under basmati & rice is almost intact as farmer have lesser choice apart from rice/ basmati; moreover, in basmati variety like Ranbir, which pays well to farmers in recent past due to its demand in market also makes farmer to keep the acreage same as that of last year

In Himachal Pradesh, a total of 76,000 ha rice acreage based on field survey has been estimated as transplanted in 11 districts. Basmati is grown in Kangra and Mandi districts only. The farmers opted Permal varieties including PR-123 in the increased paddy area and the area under Pusa-Basmati 1509.

State Wise Transplanted Area, Production

Basmati & Non-Basmati Long Grain Rice Area during Kharif 2018

Total rice transplanting in the studied 7 states has been decreased by 1.19% from last year. Farmers shifted to crops like coarse cereals/ cotton/sugarcane/maize in Haryana/ Punjab & Wester part of Uttar Pradesh. The total Basmati (notified varieties) area in these targeted 7 states & 81 districts has decreased by 2.48%. The notified Basmati varieties majorly comprises of Basmati-370, Basmati- 386, Type-3 (Dehraduni), Taraori, Ranbir, Pusa-1509, Pusa Basmati-1, CSR-30 and Pusa Basmati-1121 on which the study has been conducted and produced in the report.

This year about 40 thousand hac area of basmati acreage has been shifted either to non-basmati varieties or shifted to other major competitive crops

This year initial round of farmer interaction and various field visits suggests that about 52 - 54 lakh tons of basmati production are expected against 56.43 lakh tons basmati production on last year. The exact figures of basmati production can be assessed once harvesting and crop cutting experiments will be taken in subsequent field reports.

**State Wise Transplanted Area,
Basmati & Non-Basmati long grain Rice Area/ Production during Kharif 2018
(Area in 000 ha. / production in 000 tons)**

State	Total Basmati		Pusa Basmati 1121		Pusa 1509		PB -1		Sharbati	
	Area	Production	Area	Production	Area	Production	Area	Production	Area	Production
Haryana	634	2313	428	1455	34	135	41	217	6	20
Punjab	547	2059	482	1751	41	199	23	109	6	22
U. P	251	746	138	386	58	215	42	125	174	529
U.K	15	38	3	9	3	10	2	7	17	57
J & K	62	135	8	25	0	1			10	36
H.P	7	20.4	2	5	5	13				
Delhi	1	2								
Total	1515	5313	1062	3630	141	572	108	458	213	665

This year initial round of farmer interaction and various mandi visit suggests that harvest has started on time, however harvest pace is little slower than last year due to one late seasonal rain in Sep month (24th- 26th Sep). In Punjab and Haryana harvest usually starts little early as compared to UP/ UK, but this is in line with the market expectations.

**State Wise harvest pace / harvest intentions
Basmati & Non-Basmati Long Grain Rice Area during Kharif 2018
(Area in 000 ha. / Production in 000 tons)**

% of harvested area and intentions in Basmati & Non-Basmati varieties (as on 2nd /3rd week of Oct, 2018)					
State/ Varieties	Punjab	Haryana	Uttar Pradesh	Uttarakhand	J&K
Pusa Basmati 1121 (Harvesting starts from)	Nov 2 nd week	Nov 1 st week	Nov 2 nd week	Nov 3 rd week	Nov 2 nd week
Pusa Basmati 1509 (Harvested)	90%-95%	90%-95%	50%-60%	30%-35%	40-50%
Pusa Basmati 1 (Harvesting starts from)	Oct 4 th week	Oct 4 th week	20%-25%	20%-25%	
Basmati-370/386	Nov 1 st week	Nov 1 st week	Nov 1 st week	Nov 1 st week	
CSR 30	Nov 1 st week	Nov 2 nd week			
Pusa Basmati-1401	Nov 1 st week	Nov 1 st week	Nov 1 st week	Nov 1 st week	
Sharbati (Harvested)	90%-95%		70-75%	60-65%	
Sugandha	Nov 1 st week		Nov 1 st week		
Ranbir					35-40%

Haryana

Crop Stage: Pusa Basmati-1509 harvesting has been going in full-swing and will be completed by Oct end. While for Pusa 1121 harvesting will start from first week of Nov and goes till end of the next month. Crop Health is good as of now and no major reporting of quality concerns in basmati arrival. Labour charged @150/quintal more (i.e. 2800/qlt charges for harvesting with hand) as compare to combine harvest (i.e. 2650/qlt charges for harvested with combine). There seems to be more damage caused due to rain rather than pest attacks in Haryana. Farmers at few locations reported major pest attacks like Black hopper & black mosquitoes. The production estimates of Pusa Basmati-1509, Pusa Basmati-1, Pusa Basmati-1121 and Sharbati are given in Table below considering yield losses:

**District Wise Transplanted Area,
Basmati & Non-Basmati long grain Rice Area/ Production during Kharif 2018 in Haryana
(Area in 000 ha./ production in 000 tons)**

District	Pusa Basmati 1121		Pusa 1509		PB -1		Sharbati	
	Area	Production	Area	Production	Area	Production	Area	Production
Ambala	5	13	0.1	0.6	0.2	1.1	0.1	0.4
Bhiwani	19	57	0.0	0.0	0.0	0.0	0.1	0.3
Faridabad + Palwal	19	53	0.3	1.2	2.7	11.7	0.3	1.1
Gurgaon	2	5	0.0	0.0	0.2	0.7	0.3	0.8
Fatehabad	19	72	1.7	8.2	12.3	80.5	0.3	1.0
Hisar	36	132	0.5	2.5	0.8	4.0	0.1	0.2
Jajjhar	39	118	1.1	3.9	0.0	0.0	0.3	0.9
Jind	60	261	2.3	8.7	7.4	34.2	0.3	0.8
Kaithal	33	112	3.8	17.5	0.1	0.5	0.3	0.9
Karnal	35	127	11.2	37.7	0.2	0.9	0.3	0.8
Kurukshetra	10	39	3.2	14.6	2.3	11.8	0.1	0.4
Mewat	7	22	0.0	0.0	0.0	0.0	0.3	1.0
MahendraGarh	0	0	0.0	0.0	0.0	0.0	0.3	0.9
Panchkula	0	0	0.0	0.0	0.0	0.0	0.3	0.9
Panipat	47	129	3.2	11.2	1.8	7.0	0.3	1.2
Rewari	1	4	0.0	0.0	0.0	0.0	0.3	1.0
Rohtak	30	100	0.1	0.0	0.0	0.0	0.3	0.9
Sirsa	8	35	3.8	19.9	6.2	30.5	1.1	4.2
Sonepat	59	173	1.5	5.0	0.0	0.0	0.5	1.6
Yamunanagar	1	3	0.8	3.7	6.7	33.9	0.3	0.9
TOTAL HARYANA	428	1455	33.6	134.7	41.2	216.9	5.8	20.1

Punjab

Crop Stage: Pusa Basmati-1509 harvesting has been going in full-swing and will be completed by Oct end. Pusa 1509 is being marketed @ Rs. 2600-2800 per quintal. No Disease / Pests have been reported but Neck Blast and BPH incidence are observed in few areas but these pest incidences are below ETL level and the crop has been good. Farmers shifted towards PR variety as compare to basmati varieties due to low rates of basmati varieties. This season Type 3 varieties (Hybrid varieties) has more demand as compare to Pusa 1121. Labour rate of harvesting 1509 is more as compare to other states. Pusa 1121 variety of J& K has much demand as compare to its own variety in Punjab. Punjab farmers prefer to sell the produce in Haryana mandi as Punjab mandi board has more stringent moisture norms as compare to Haryana mandis.

The production estimates of Pusa Basmati-1509, Pusa Basmati-1, Pusa Basmati-1121 and Sharbati are given in Table below

**District Wise Transplanted Area,
Basmati & Non-Basmati long grain Rice Area/ Production during Kharif 2018 in Punjab
(Area in 000 ha. / production in 000 tons)**

District	Pusa Basmati 1121		Pusa 1509		PB -1		Sharbati	
	Area	Production	Area	Production	Area	Production	Area	Production
Amritsar	72	265	32.6	159.5		0.0	0.4	1.4
Barnala	2	7	0.0	0.0	0.5	2.4	0.0	0.0
Bhatinda	9	31	0.0	0.0		0.0	0.0	0.0
Faridkot	20	80	0.0	0.0		0.0	0.0	0.0
Fatehgarh Sahib	8	30	0.0	0.0	1.9	9.2	0.0	0.0
Fazilka	66	264	0.0	0.0		0.0	0.0	0.0
Firozpur	36	130	0.0	0.0		0.0	0.0	0.0
Gurdaspur	41	139	0.1	0.4		0.0	3.6	13.9
Pathankot	3	8	0.0	0.0		0.0	1.9	7.1
Hoshiarpur	6	22	0.0	0.0		0.0	0.0	0.0
Jalandhar	10	36	0.8	0.4		0.0	0.0	0.0
Kapurthala	8	27	0.0	0.0		0.0	0.0	0.0
Ludhiana	17	61	2.2	10.6	3.2	14.3	0.0	0.0
Mansa	1	3	0.0	0.0		0.0	0.0	0.0
Moga	17	42	0.0	0.0	0.1	0.6	0.0	0.0
Mohali	4	12	0.0	0.0		0.0	0.0	0.0
Muktsar	42	150	0.0	0.0	8.3	39.7	0.0	0.0
Nawanshahar	5	16	0.2	1.1		0.0	0.0	0.0
Patiala	16	61	1.4	6.8	2.6	12.3	0.0	0.0
Rupnagar	3	10	0.0	0.1		0.0	0.0	0.0
Sangrur	25	91	0.0	0.0	6.4	30.9	0.0	0.0
Tarantaran	72	264	3.8	19.7		0.0	0.0	0.0
Total	482	1751	41.1	198.5	23.1	109.3	5.9	22.2

Uttar Pradesh

Pusa Basmati-1509 harvesting has been started. Harvesting has reached at full swing in the state in couple of weeks. Pest attack like BPH, Node blast and neck blast have been observed but not severely affecting the crop of Pusa Basmati-1 & 6 and Pusa Basmati-1121. In UP basmati farmers are using hexaconal pesticide which reduces their chances of getting to export markets. Farmers shifting from PB 1121 due to its higher labour cost. Acreage in PB 1 is also losing interest due to its milling losses as compare to other basmati varieties. Farmers prefer Sharbati due to its local market demand. Farmer also grows HKR 47 variety as it is used in mixing with PB 1121 just like Sugandha long grain variety.

**District Wise Transplanted Area,
Basmati & Non-Basmati long grain Rice Area/ Production during Kharif 2018 in U.P
(Area in 000 ha./ production in 000 tons)**

District	Pusa Basmati 1121		Pusa 1509		PB -1 & 6		Sharbati	
	Area	Production	Area	Production	Area	Production	Area	Production
Agra	0.3	0.8	0.5	1.8	0.1	0.2		
Aligarh	16.3	42.2	4.7	21.7	4.3	11.8	2.5	8.4
Auraiya	1.0	2.5	0.2	0.5	0.0	0.2	1.8	4.8
Baghpat	1.8	5.2	0.5	2.1	1.2	3.5	0.2	0.8
Bareilly	1.2	3.0	0.7	2.1	0.4	1.2	46.4	135.2
Bijnore	1.4	3.5	2.5	8.3	3.2	9.2	18.1	56.0
Budaun	1.9	4.8	2.1	6.1	0.7	2.2	20.8	62.0
Bulandshahr	19.3	54.6	4.7	18.8	5.7	19.1	4.5	15.3
Etah+Kasganj	4.7	11.5	3.1	10.2	0.5	1.5	0.9	2.5
Farukhabad	1.7	4.4	0.9	2.5	0.1	0.2	0.1	0.4
Firozabad	2.2	5.8	1.3	4.9	0.2	0.7	0.1	0.3
Etawah	6.0	17.3	2.6	8.8	0.2	0.5	0.1	0.2
Gautam Buddha Nagar	17.1	50.0	0.8	3.3	1.8	5.9	1.4	4.7
Ghaziabad+Hapur	4.7	15.9	3.2	14.4	1.4	4.6	3.5	10.1
Hathras	3.8	11.1	2.4	8.1	0.8	2.6	0.7	2.1
Mathura	22.5	68.1	3.4	12.9	1.0	3.4	0.3	0.9
Mainpuri	13.9	37.2	2.8	8.2	0.2	0.7	0.2	0.6
Meerut	2.2	4.9	2.6	11.2	2.3	7.4	0.6	2.0
Moradabad	1.1	3.3	2.3	8.3	0.3	1.0	9.3	30.9
J. P. Nagar	1.2	3.0	2.0	7.2	1.0	2.9	7.2	23.5
Kannauj	0.6	1.6	1.4	4.3	0.2	0.4	0.1	0.4
Muzaffarnagar+Shamli	4.1	8.8	2.5	10.5	3.9	11.6	1.3	3.6
Pilibhit	0.8	2.4	3.4	13.2	0.2	0.5	5.4	16.6
Rampur	0.6	1.8	1.4	4.9	0.1	0.5	24.0	71.7
Saharanpur	6.5	15.3	3.4	10.8	11.4	30.9	7.5	22.1
Shahjehanpur	1.3	3.8	0.8	3.2	0.3	0.8	8.7	28.8
Sambhal	1.4	3.6	1.7	6.6	0.4	1.3	8.5	25.4
Total	139.5	386.5	57.8	214.6	41.8	124.8	174.0	529.5

Uttarakhand

Harvest activity in Uttarakhand starts little late as compare to other states and it is as per the market expectation. The production estimates of Pusa Basmati-1509, Pusa Basmati-1, Pusa Basmati-1121 and Sharbati are given in Table below

District Wise Transplanted Area,
Basmati & Non-Basmati long grain Rice Area/ Production during Kharif 2018 in U.K
(Area in 000 ha./ production in 000 tons)

District	Pusa Basmati 1121		Pusa 1509		PB -1		Sharbati	
	Area	Production	Area	Production	Area	Production	Area	Production
Dehradun	0.21	0.49	0.21	0.71	0.00	0.00	2.60	7.83
Haridwar	1.48	4.06	0.53	2.38	2.11	6.41	4.24	15.81
Nainital	0.28	0.71	0.31	0.93	0.00	0.00	1.47	4.86
U S Nagar	1.42	3.36	1.54	6.26	0.14	0.42	8.65	28.51
Total	3.38	8.62	2.58	10.29	2.25	6.82	16.95	56.90

Jammu & Kashmir

Harvest activity in Ranbir already started . The production estimates of Pusa Basmati-1509, Pusa Basmati-1, Pusa Basmati-1121 and Sharbati are given in Table below

District Wise Transplanted Area,
Basmati & Non-Basmati long grain Rice Area/ Production during Kharif 2018 in J & K
(Area in 000 ha./ production in 000 tons)

District	Pusa Basmati 1121		Pusa 1509		Sharbati	
	Area	Production	Area	Production	Area	Production
Jammu	1.4	4.3	0.0	0.0	9.1	32.3
Kathua	6.3	20.6	0.2	0.8	0.7	2.6
Samba	0.6	0.2	0.1	0.3	0.3	1.0
Total	8.2	25.1	0.3	1.1	10.1	35.9

Himachal Pradesh

The district-wise target for total rice in Himachal Pradesh during Kharif-2018 is given below

District Wise Transplanted Area,
Basmati & Non-Basmati long grain Rice Area/ Production during Kharif 2018 in H.P
(Area in 000 ha./ production in 000 tons)

District	Pusa Basmati 1121		Pusa 1509	
	Area	Production	Area	Production
Kangra*	1.9	5.8	1.1	3.1
Mandi*	0.0		4.1	11.6
Total	1.9	5.8	5.2	14.7

State-Mandi wise arrival/prices

Basmati & Non-Basmati Long Grain Rice prices during Kharif 2018

Basmati 1121 Arrival & Prices Haryana

APMC	Arrivals traded on e-NAM (Qtl)		Prices (INR/Qtl)	
	(1/10/2018-20/10/2018)		20-Oct	15-Oct
BARWALA HISAR			3481	
KAITHAL	630		3480	3525
LADWA	35		3505	3180
PANIPAT	130		3621	3561
PEHOWA			2100	
SAMALKHA			3541	
SIRSA			2681	
DHAND	90			3500
HANSI	30			3325
ISMAILABAD	80			3531
JIND	112			3350
KALAYAT	80			3511
KARNAL	50			3500
MADLAUDA	35			3420
NARNAUND	50			3491
NARWANA	150			3471
REWARI	259			3617
SAFIDON	60			3451
SONEPAT	65			3551
THANESAR	50			3271

Basmati 1509 Arrival & Prices Haryana

APMC	Arrivals traded on e-NAM (Qtl)			Prices(INR/Qtl)			
	01-09-2018 to 15-10-2018	20-Oct	15-Oct	1-Oct	30-Sep	15-Sep	1-Sep
CHEEKA	55	2720	3445		2505	2500	
FATEHABAD			2926	2716		2485	
GANAUR						2501	
GHARAUNDA				2601	2591	2481	1850
ISMAILABAD	95	2871	2805	2581	2600	2511	
JAKHAL			2881	2675		2632	
KARNAL	103	3400	2800	2550		2560	2650
LADWA	45	2815	3325	2700	2745	2600	2675
NISSING	20	2700	2900	2750	2590	2355	
PANIPAT			3200	2641	2491	2521	
THANESAR			2772		2885	2600	
TOHANA						2700	
AMBALA	40	2921	2835	2591	2581		
GOHANA	612	2930	2931	2500	2565		
HODAL	85	2500		2181	1911		
KAITHAL	450	2890	2885	2600	2635		
NARWANA	110	3201			2400		
PEHOWA			2671	2100	3450		
PUNDRI			2705	2130	2530		
SONEPAT			3401		2692		
UCHANA				2574	2576		
BARWALA HISAR			2935	2550			
DHAND	95	3210		2500			
HANSI	330	2851	2900	2300			
INDRI			2748	2525			
JIND	3657	2861	2925	2280			
JULANA	577	3431	2971	2561			
KALAYAT	80	3231	2925	2658			
MADLAUDA	270	3340	2971	2678			
PALWAL				2471			
PILLUKHERA			2642	2361			
SAFIDON			2668	2665			
SHAHBAD				2656			
SIRSA			2900	2700			
TARAORI				2600			
ASANDH			2815				
ELLANABAD	525	2825	2827				
NARNAUND	140	2929	2895				
RANIA			2611				
RATIA			2761				
REWARI			2785				
ROHTAK			2901				
SAMALKHA			3471				

Basmati 1121 Arrival & Prices Punjab

APMC	Arrivals traded on e-NAM (Qtl)	20-Oct-18	15-Oct-18	30-Sep-18	1-Sep-18
AMRITSAR			2710	2545	3220
SANGRUR	20	3380	3200		

Basmati 1509 Arrival & Prices in Punjab

APMC	Arrivals traded on e-NAM (Qtl)	Prices(INR/Qtl)	
		01-Sep to 15-Sep	15-Sep-18
FAZILKA		35	2575

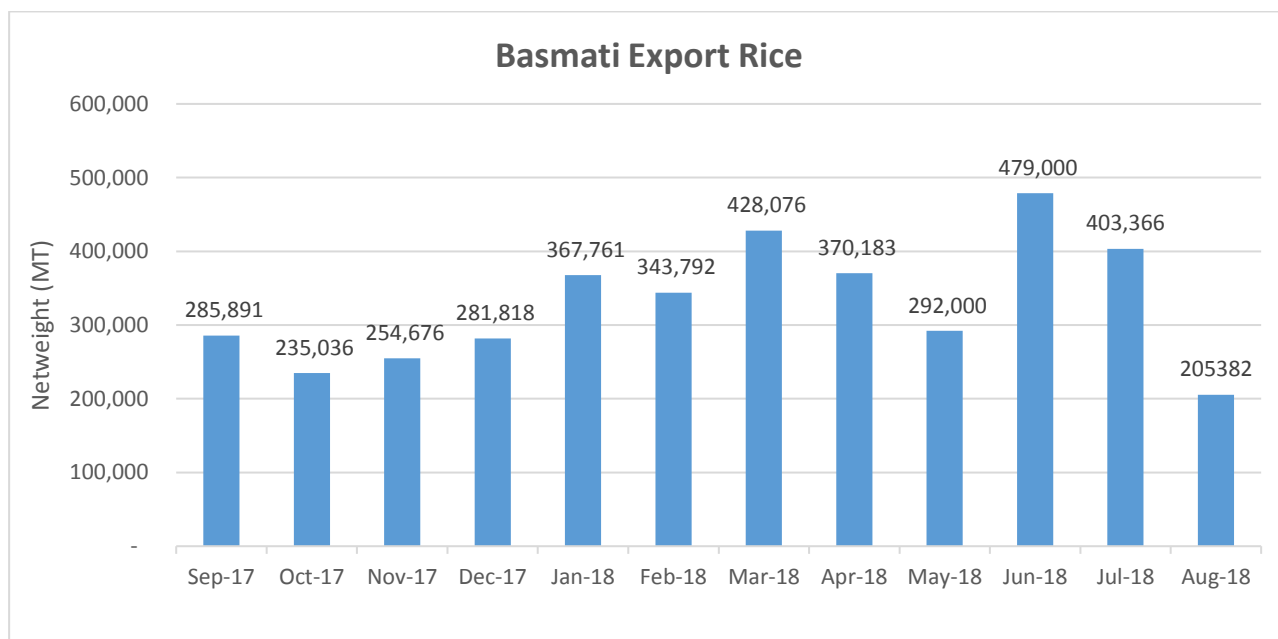
Exports of Basmati rice

All India Exports of Basmati Rice from India from (Sep 2017-Aug2018)

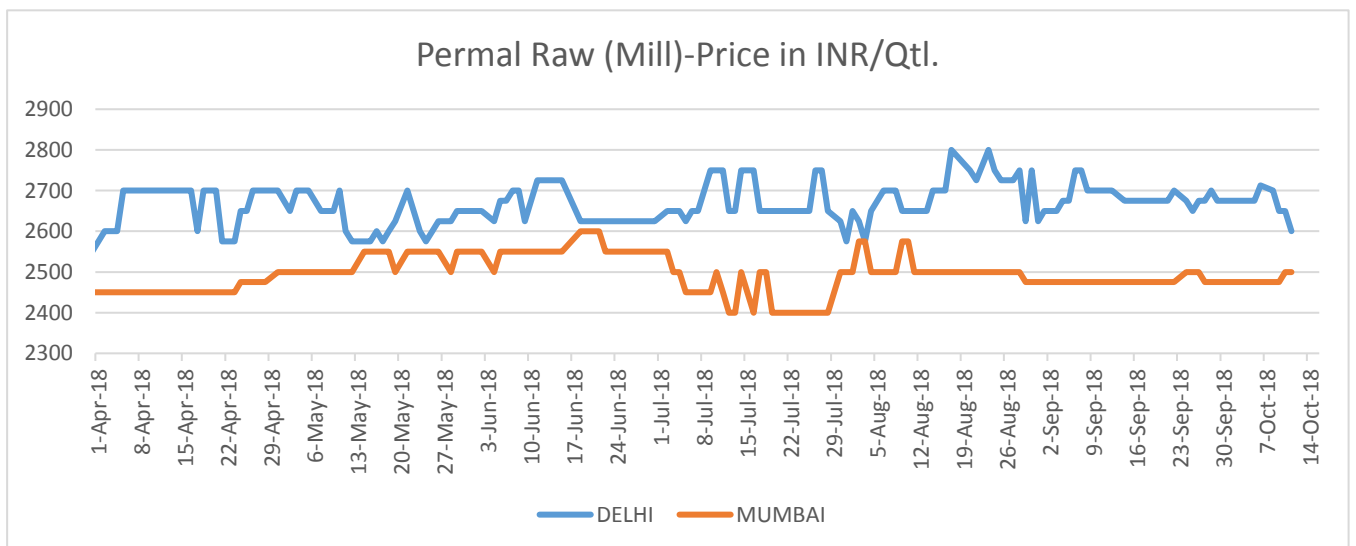
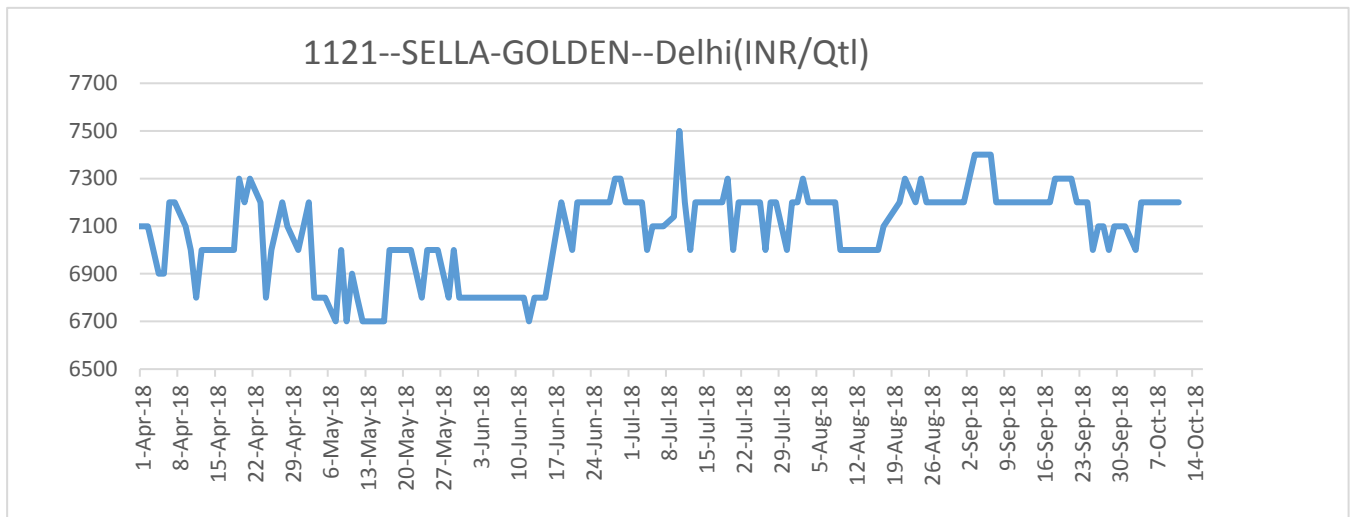
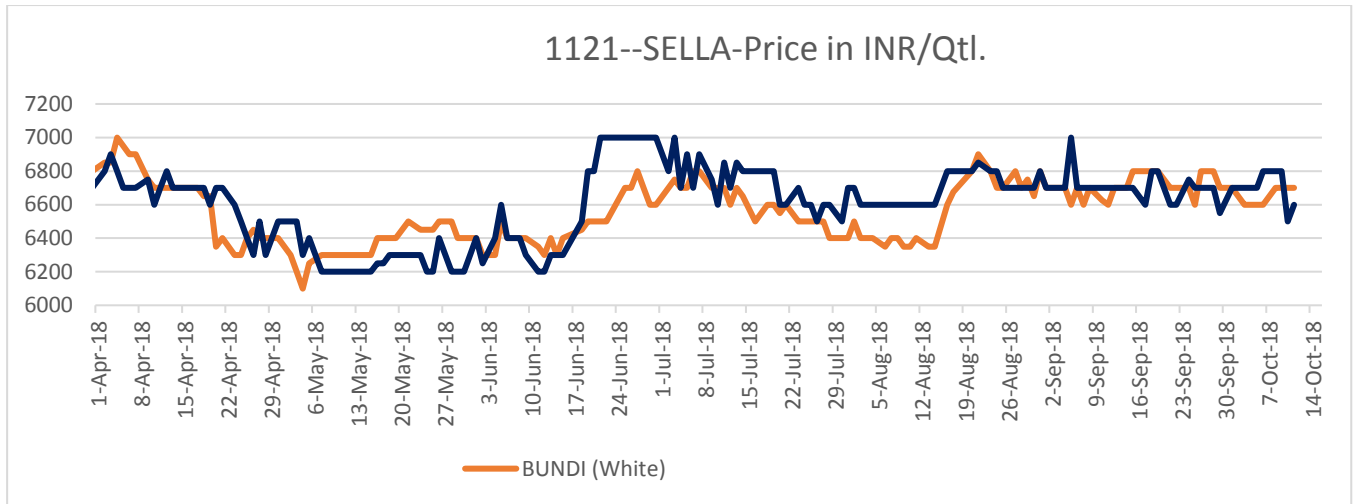
Period Desc.	Fig In Tons
Sep-17	285,891
Oct-17	235,036
Nov-17	254,676
Dec-17	281,818
Jan-18	367,761
Feb-18	343,792
Mar-18	428,076
Apr-18	370,183
May-18	292,000
Jun-18	479,000
Jul-18	403,366
Aug-18	205,382

Source: DGCIS

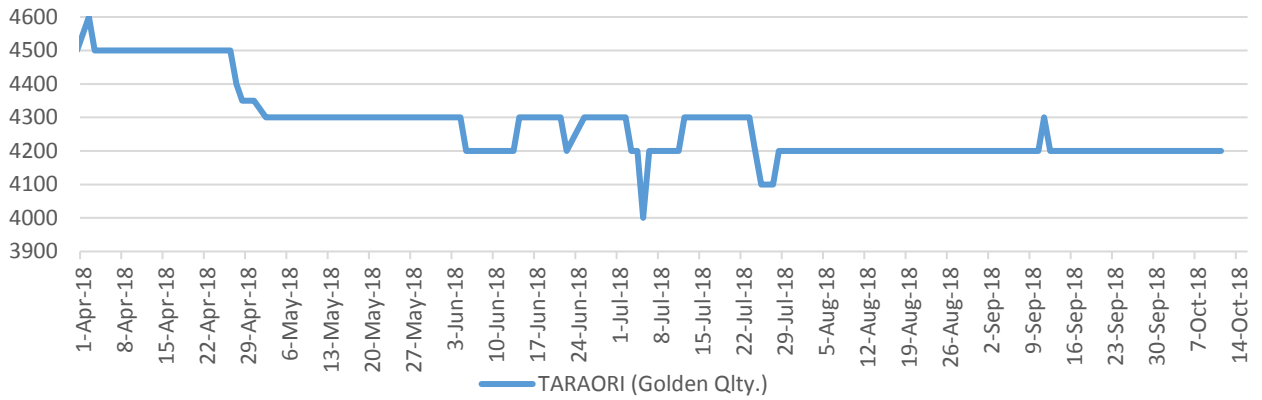
Export of Basmati Rice (Sep 2017-Aug 2018)



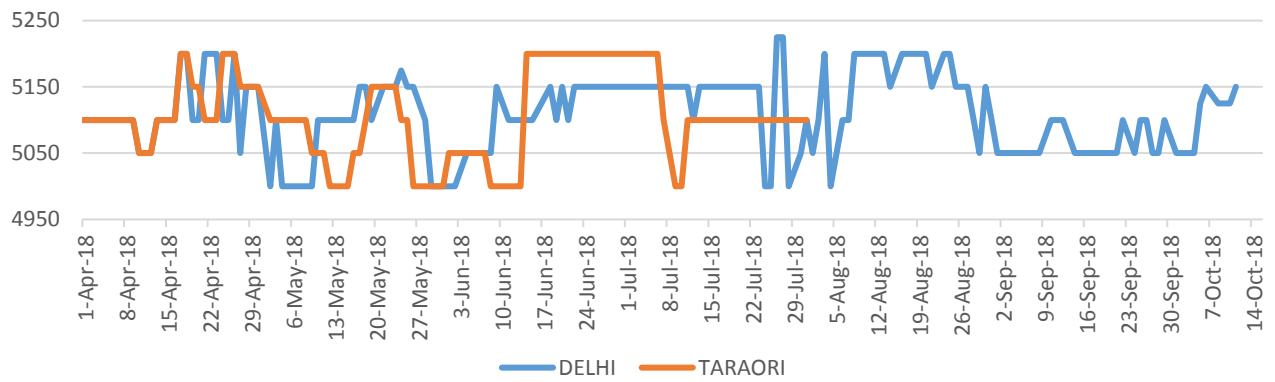
All India Rice price trends in major markets



SHARBATI SELLA(MILL)-Price in INR/Qtl.

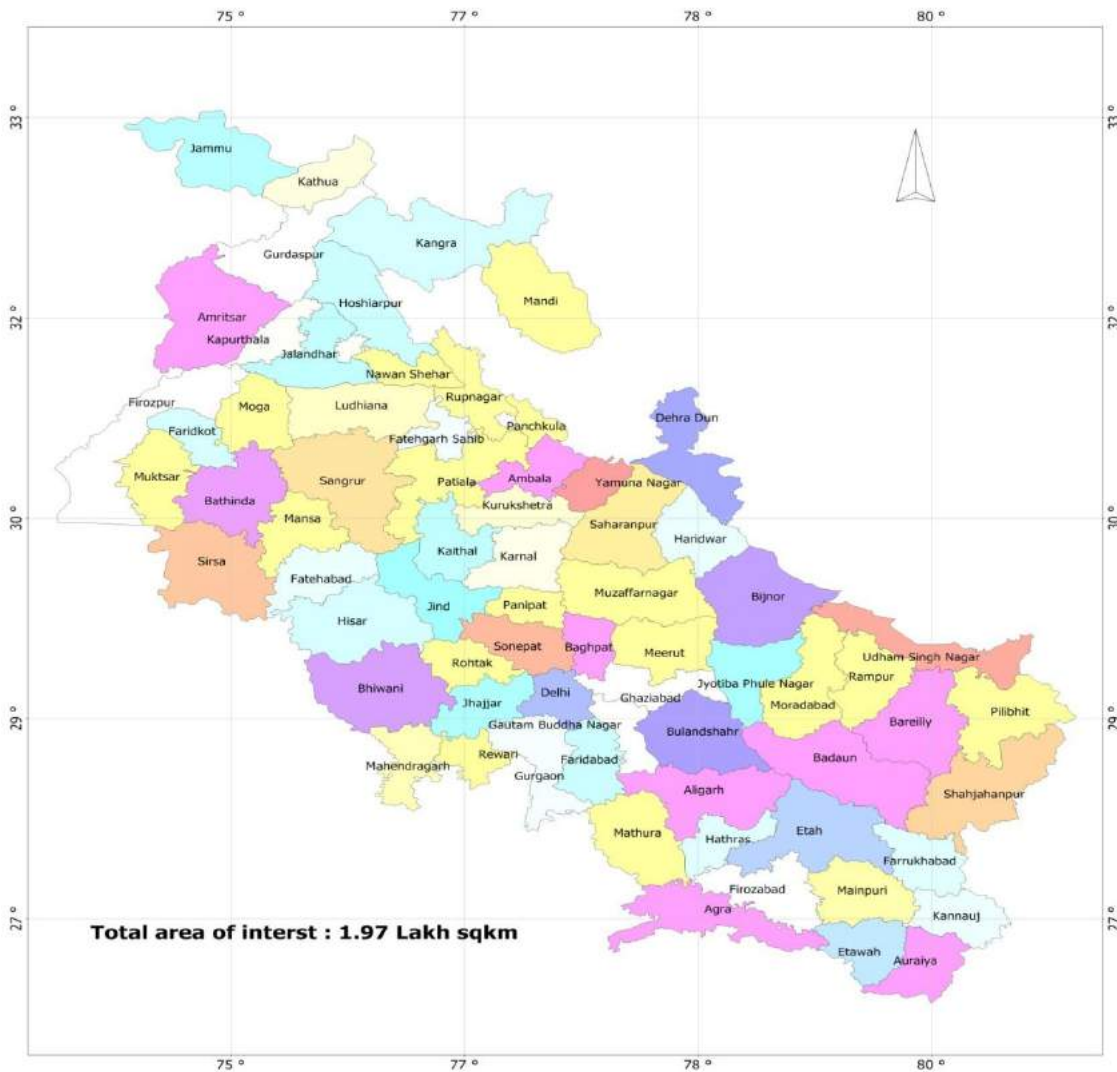


SHARBATI STEAM(MILL)-Price in INR/Qtl.



Project Background

Timely information on the area and likely production of the crop before the harvest helps exporters and other decision makers involved in Basmati trade to take decisions about the quantum and time of export. Realizing this potential, the Basmati Export Development Foundation (BEDF), New Delhi contracted M/s Geotrans Technologies Pvt. Ltd to undertake field survey work for acreage estimation for Basmati crop field survey on selected varieties, crop health monitoring and yield estimation and production for Basmati rice and non-notified varieties. It has been done on questionnaire-based sample survey of farmers across 79 districts in the selected seven states i.e. Punjab, Haryana, Uttar Pradesh, Uttarakhand, Himachal Pradesh, and Jammu & Kashmir apart from Delhi. The field survey-based approach has been being applied to collect the information at block level to improve the accuracy further to a desired level. The Basmati varieties for which information is required include Basmati-370, Basmati- 386, Type-3 (Dehraduni), Taraori, Ranbir), Pusa-1509, Pusa Basmati-1, CSR-30 and Pusa Basmati-1121 and non-notified, non- Basmati (Sharbati, and Permal).



Study Area Details

The study is confined to 79 districts, which includes 22 districts of Punjab (Amritsar, Barnala, Bathinda, Faridkot, Fatehgarh, Sahib, Firozpur, Fazilka, Gurdaspur, Pathankot, Hoshiarpur, Jalandhar, Kapurthala, Ludhiana, Mansa, Moga, Mohali, Muktsar, Nawanshahr, Patiala, Ropar, Sangrur and Tarantaran), 21 districts of Haryana (Ambala, Faridabad, Bhiwani, Fatehabad, Gurgaon, Hissar, Jhajjar, Jind, Kaithal, Karnal, Kurukshetra, MahendraGarh, Mewat, Palwal, Panchkula, Panipat, Rewari, Rohtak, Sirsa, Sonapat, Yamunanagar), 3 Districts of Jammu & Kashmir (Jammu, Samba and Kathua), 27 districts of Uttar Pradesh (Agra, Aligarh, Auraiya, Baghpat, Bareilly, Bijnore, Budaun, Bulandshahr, Etah, Kasganj, Etawah, Ferozabad, Gautam Buddha Nagar, Ghaziabad, Hapur, Hathras, J. P. Nagar, Kannauj, Mainpuri, Mathura, Meerut, Moradabad, Sambhal, Muzaffarnagar, Shamli, Pilibhit, Rampur, Saharanpur, Shahjehanpur), 4 districts of Uttarakhand, 2 district of Himachal Pradesh and one of Delhi.

Snapshot of acreage and production in Study Area

State Wise Transplanted Area, Basmati & Non-Basmati Long Grain Rice Area during Kharif 2018 (in 000ha)

S. No	State	Total Basmati	Pusa-1121	PB-1	Pusa-1509	Pusa-1401	Basmati 370	CSR-30	Type-3 & Others	Non-Notified	
										Sharbati	Sugandha
1	Haryana	634	428	41	34	43		87		6	
2	Punjab	547	482	23	41					6	
3	Uttar Pradesh	251	138	42	58				13	174	91
4	Uttarakhand	15	3	2	3				6	17	0
5	Jammu & Kashmir	62	8		0		54			10	
6	Himachal Pradesh	7	2		5						
7	Delhi	1									
Total		1515	1062	108	141	43	54	87	19	213	92

State Wise initial estimated production of Basmati & Non-Basmati long grain Rice during Kharif 2018 (production in 000 ton)

S. No	State	Total Basmati	Pusa-1121	PB-1	Pusa-1509	Pusa-1401	Basmati 370	CSR-30	Type-3 & Others	Non-Notified	
										Sharbati	Sugandha
1	Haryana	2313	1455	217	135	256		250		20	
2	Punjab	2059	1751	109	199					22	
3	Uttar Pradesh	746	386	125	215				20	529	307
4	Uttarakhand	38	9	7	10				12	57	2
5	Jammu & Kashmir	135	25		1		98			36	
6	Himachal Pradesh	20	6		15						
Total		5311	3631	458	574	256	98	250	32	665	309

State wise Variety wise details

Basmati Acreages (000 ha.) & Production (000 tons) of basmati rice basis initial estimations

Area (in 000 Ha.)					
S. No	State	2017	2018	2017	2018*
		Basmati Area		Basmati Production	
1	Haryana	652	634	2535	2313
2	Punjab	562	547	2142	2059
3	Uttar Pradesh	256	251	763	746
4	Uttarakhand	15	15	39	38
5	J & K	62	62	132	135
6	Himachal Pradesh	7	7	30	20
Total		1554	1515	5644	5311

State wise Acreages (000 ha.) & Production (000 tons) of Pusa-basmati 1121

S. No	State	2017	2018	2017	2018
		Basmati Area		Basmati Production	
1	Haryana	444	428	1612	1455
2	Punjab	500	482	1842	1751
3	Uttar Pradesh	144	138	403	386
4	Uttarakhand	4	3	9	9
5	J & K	8	8	25	25
6	Himachal Pradesh	2	2	7	6
7	Delhi				
	Total	1101	1062	3898	3631

State wise Acreages (000 ha.) & Production (000 tons) of Pusa-basmati 1509

S. No	State	2017	2018	2017	2018
		Basmati Area		Basmati Production	
1	Haryana	30	34	148	135
2	Punjab	40	41	193	199
3	Uttar Pradesh	56	58	206	215
4	Uttarakhand	3	3	10	10
5	J & K	0	0	1	1
6	Himachal Pradesh	5	5	22	15
7	Delhi				
	Total	133	141	581	574

State wise Acreages (000 ha.) & Production (000 tons) of Pusa-basmati 1

S. No	State	2017		2018	
		Basmati Area		Basmati Production	
1	Haryana	42	41	223	217
2	Punjab	23	23	110	109
3	Uttar Pradesh	43	42	133	125
4	Uttarakhand	2	2	8	7
	Total	110	108	474	458

State wise Acreages (000 ha.) & Production (000 tons) of Long Grain Non-Basmati (Sharbati)

S. No	State	2017		2018	
		Sharbati Area		Sharbati Production	
1	Haryana	6	6	21	20
2	Punjab	6	6	22	22
3	Uttar Pradesh	174	174	528	529
4	Uttarakhand	15	17	50	57
5	J & K	10	10	36	36
	Total	211	213	657	665

State wise Acreages (000 ha.) & Production (000 tons) of Long Grain Non-Basmati(Sugandha)

S. No	State	2017		2018	
		Basmati Area		Basmati Production	
1	Uttar Pradesh	92	91	309	307
2	Uttarakhand	0	0	2	2
	Total	92	92	311	309

Chapter-3

District Wise Basmati Acreage Details

Haryana

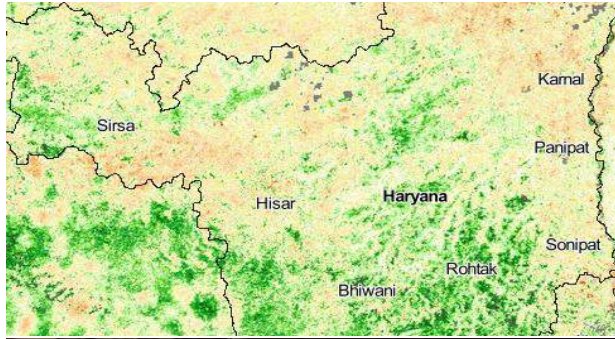
District-wise acreage (000ha.) under Basmati rice in Haryana during Kharif 2018

Sl. No.	District	Pusa Basmati-1121	CSR30	Pusa Basmati-1509	Pusa Basmati 1	Punjab Basmati-3	Pusa 1401	Sharbati
1	Kaithal	5	9	0	0		0	0
2	Karnal	19	0	0	0		0	0
3	Kurukshetra	19	0	0	3		0	0
4	Rohtak	2	0	0	0		0	0
5	Faridabad	19	1	2	12		8	0
6	Palwal	36	1	1	1		0	0
7	Fatehabad	39	0	1	0		0	0
8	Sirsa	60	6	2	7		0	0
9	Jhajjar	33	22	4	0		0	0
10	Bhiwani	35	25	11	0		0	0
11	Yamunanagar	10	13	3	2		0	0
12	Panipat	7	0	0	0		0	0
13	Jind	0	0	0	0		0	0
14	Ambala	0	0	0	0		0	0
15	Sonepat	47	7	3	2		0	0
16	Hisar	1	0	0	0		0	0
17	Mewat	30	0	0	0		0	0
18	Rewari	8	0	4	6		35	1
19	Gurgaon	59	3	2	0		0	1
20	Panchkula	1	0	1	7		0	0
	Total	428	87	34	41		43	6

% change in acreage (000ha.) of Basmati & Non-Basmati varieties of rice in 2018 over 2017 in Haryana

S.no	Variety	Acreage 2017	Acreage 2018	% Change
1	Basmati			
	Pusa Basmati-1121	444	428	-3.39%
	Pusa Basmati-1	42	41	-0.77%
	Pusa Basmati-1401	44	43	-2.22%
	Pusa Basmati-1509	30	34	12.41%
	CSR-30	93	87	-6.17%
2	Non-Basmati Long Grain			
	Sharbati	6.0	5.8	-3.50%

Haryana Satellite imagery and comparison from last year during same period
(17th Oct, 2018)



(17th Oct, 2017)



Punjab

District-wise acreage (000ha.) under total rice and Basmati rice in Punjab during Kharif 2018

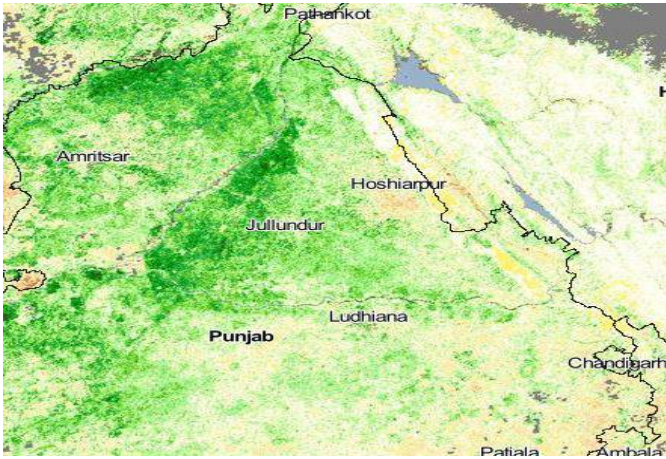
Sl. No	District	Total Basmati	Pusa-1121	Pusa-1509	CSR-30	Basmati-386/ CSR 30	PB-1	Sharbati
1	AMRITSAR	105	72	33		0		0
2	BARNALA	2	2	0			0	0
3	BATHINDA	9	9	0				0
4	FARIDKOT	20	20	0				0
5	FATEHGARH SAHIB	10	8	0			2	0
6	FAZILKA	66	66	0				0
7	FEROZEPUR	36	36	0				0
8	GURDASPUR	41	41	0				4
9	HOSHIARPUR	3	3	0				2
10	JALANDHAR	6	6	0				0
11	KAPURTHALA	10	10	1				0
12	LUDHIANA	8	8	0				0
13	MANSA	23	17	2			3	0
14	MOGA	1	1	0				0
15	MOHALI	17	17	0			0	0
16	MUKATSAR	4	4	0				0
17	NAWANSHAHR	51	42	0			8	0
18	PATHANKOT	5	5	0				0
19	PATIALA	20	16	1			3	0
20	RUPNAGAR	3	3	0				0
21	SANGRUR	32	25	0			6	0
22	TARN TARAN	76	72	4				0
	Total	547	482	41		0	23	6

% change in acreage(000ha.) of Basmati & Non-Basmati varieties of rice in 2018 over 2017 in Punjab

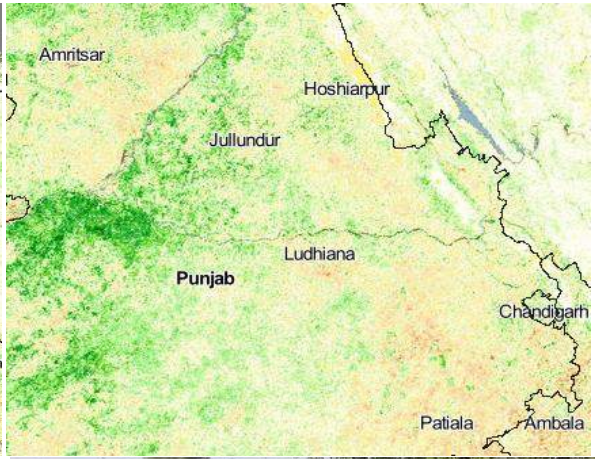
S.no	Variety	Acreage 2017	Acreage 2018	% Change
1	Basmati			
	Pusa Basmati-1121	500	482	-3.48%
	Pusa Basmati-1	23	23	0.00%
	Pusa Basmati-1509	40	41	4.02%
	Bas-386	0	0	0.00%
	Non-Basmati Long Grain			
2	Sharbati	6	6	0.00%

Punjab Satellite imagery and comparison from last year during same period

(17th Oct,2018)



(17th Oct,2017)



Uttar Pradesh

District-wise acreage (000ha.) under total rice and Basmati rice in U.P during Kharif 2018

District	Type-3 & Others	Pusa Basmati-1121	Pusa Basmati-1509	Pusa Basmati-1 & 6	Sharbati	Sugandha
Agra	0	0.3	0.5	0.1		2.2
Aligarh	0	16.3	4.7	4.3	2.5	9.1
Auraiya	0.7	1.0	0.2	0.0	1.8	0.2
Baghpat	0.0	1.8	0.5	1.2	0.2	0.9
Bareilly	0.7	1.2	0.7	0.4	46.4	0.5
Bijnore	0	1.4	2.5	3.2	18.1	1.3
Budaun	9.3	1.9	2.1	0.7	20.8	2.0
Bulandshahr	0.0	19.3	4.7	5.7	4.5	14.8
Etah+Kasganj	0	4.7	3.1	0.5	0.9	7.4
Farukhabad	0	1.7	0.9	0.1	0.1	2.4
Firozabad	0	2.2	1.3	0.2	0.1	5.3
Etawah	0	6.0	2.6	0.2	0.1	4.6
Gautam Buddha Nagar	0.01	17.1	0.8	1.8	1.4	0.9
Ghaziabad+Hapur	0	4.7	3.2	1.4	3.5	4.9
Hathras	0	3.8	2.4	0.8	0.7	5.9
Mathura	0	22.5	3.4	1.0	0.3	3.4
Mainpuri	0	13.9	2.8	0.2	0.2	6.0
Meerut	0.03	2.2	2.6	2.3	0.6	3.2
Moradabad	0	1.1	2.3	0.3	9.3	2.4
J. P. Nagar	0	1.2	2.0	1.0	7.2	2.8
Kannauj	0	0.6	1.4	0.2	0.1	1.4
Muzaffarnagar+Shamli	0.11	4.1	2.5	3.9	1.3	2.0
Pilibhit	0	0.8	3.4	0.2	5.4	0.4
Rampur	0	0.6	1.4	0.1	24.0	0.2
Saharanpur	0.2	6.5	3.4	11.4	7.5	2.9
Shahjehanpur	1.7	1.3	0.8	0.3	8.7	0.4
Sambhal	0.0	1.4	1.7	0.4	8.5	4.4
Total	12.7	139.5	57.8	41.8	174.0	91.6

% change in acreage (000ha.) of Basmati & Non-Basmati varieties of rice in 2018 over 2017 in U.P

S.no	Variety	Acreage 2017	Acreage 2018	% Change
1	Basmati			
	Pusa Basmati-1121	144	138	-4.22%
	Pusa Basmati-1 & 6	43	42	-2.38%
	Pusa Basmati-1509	56	58	3.97%
	Type 3 & Others	13	13	-0.96%
	Non-Basmati Long Grain			
2	Sharbati	174	174	0.24%
	Sugandha	92	91	-0.57%

Uttar Pradesh imagery and comparison from last year during same period

(17th Oct, 2018)



(17th Oct, 2017)



Uttarakhand

District-wise acreage(000ha.) under total rice and Basmati rice in U.K during Kharif 2018

District	Type-3 & Others	Pusa Basmati-1121	Pusa Basmati-1509	Pusa Basmati-1	Sharbati	Sugandha
Dehradun	2.4	0.2	0.2	0.0	2.6	0.1
Haridwar	2.3	1.5	0.5	2.1	4.2	0.3
Nainital	0.9	0.3	0.3	0.0	1.5	0.0
U S Nagar	0.7	1.4	1.5	0.1	8.6	0.2
Total	6.3	3.4	2.6	2.3	17.0	0.5

% change in acreage(000ha.) of Basmati & Non-Basmati varieties of rice in 2018 over 2017 in U.K

S.no	Variety	Acreage 2017	Acreage 2018	% Change
1	Basmati			
	Pusa Basmati-1121	3.5	3.4	-4.36%
	Pusa Basmati-1	2.3	2.3	-1.03%
	Pusa Basmati-1509	2.5	2.6	1.98%
	Type 3 & Others	6.4	6.3	-1.50%
Non-Basmati Long Grain				
2	Sharbati	15.0	17.0	13.28%
	Sugandha	0.5	0.5	0.00%

Uttarakhand imagery and comparison from last year during same period (17th Oct, 2018)



(17th Oct, 2017)



Jammu & Kashmir

District-wise acreage(000ha.) under total rice and Basmati rice in J.K during Kharif 2018

District	Pusa Basmati- 1121	Pusa Basmati 1509	Basmati 370/ Ranbir	Sharbati
Jammu	1.4	0.0	48.1	9.1
Kathua	6.3	0.2	3.8	0.7
Samba	0.6	0.1	2.2	0.3
Total	8.2	0.3	54.1	10.1

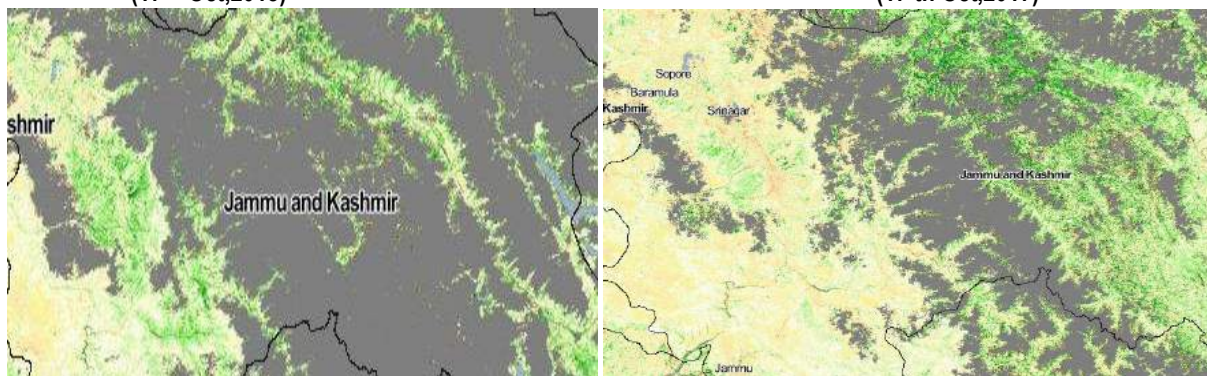
% change in acreage(000ha.) of Basmati & Non-Basmati varieties of rice in 2018 over 2017 in J.K

S.no	Variety	Acreage 2017	Acreage 2018	% Change
1	Basmati			
	Pusa Basmati-1121	8.2	8.2	0.33%
	Pusa Basmati 1509	0.3	0.3	0.00%
	Basmati 370/ Ranbir	53.1	53.9	1.53%
2	Non-Basmati Long Grain			
	Sharbati	10.149	10.149	0.00%

Jammu & Kashmir imagery and comparison from last year during same period

(17th Oct,2018)

(17 th Oct,2017)



Himachal Pradesh

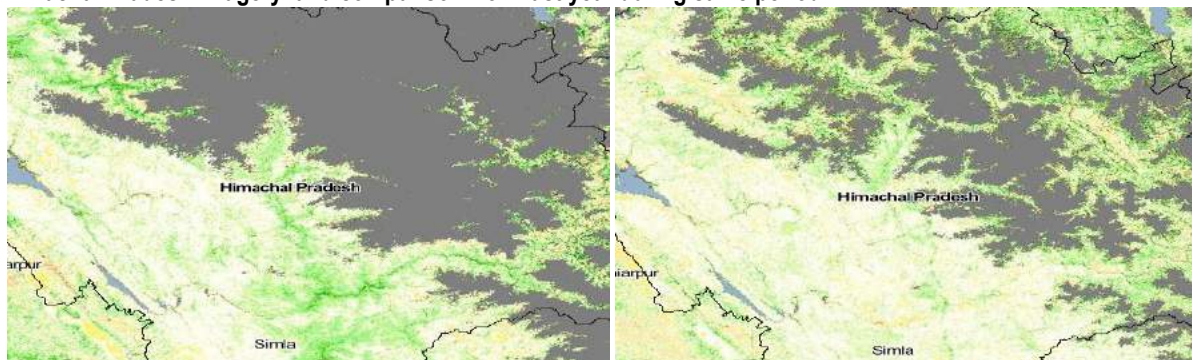
District-wise acreage(000ha.) under total rice and Basmati rice in H.P during Kharif 2018

District	Pusa Basmati 1121	Pusa Basmati 1509
Kangra*	1.9	1.1
Mandi*	0.0	4.1
Total	1.9	5.2

% change in acreage(000ha.) of Basmati & Non-Basmati varieties of rice in 2018 over 2017 in H.P

S.no	Variety	Acreage 2017	Acreage 2018	% Change
1	Basmati			
	Pusa Basmati 1121	1.92	1.92	0.00%
	Pusa Basmati 1509	5.1	5.151	1.00%

Himachal Pradesh imagery and comparison from last year during same period



Chapter-4

District Wise Basmati Production Details (ALL FIGURES IN LAC TONS)

Haryana

District	Total Basmati	Pusa Basmati 1121	Pusa 1509	CSR-30	PB -1	PB 1401	Sharbati
Ambala	34	13	1	19	1		0
Bhiwani	57	57	0	0	0		0
Faridabad + Palwal	66	53	1	0	12		1
Fatehabad	6	5	0	0	1		1
Gurgaon	217	72	8	3	80	53	1
Hisar	141	132	3	3	4		0
Jajjhar	122	118	4	1	0		1
Jind	321	261	9	16	34		1
Kaithal	194	112	18	64	0		1
Karnal	232	127	38	67	1		1
Kurukshetra	104	39	15	38	12		0
Mewat	22	22	0	0	0		1
MahendraGarh	0	0	0	0	0		1
Panchkula	0	0	0	0	0		1
Panipat	175	129	11	28	7		1
Rewari	4	4	0	0	0		1
Rohtak	100	100	0	0	0		1
Sirsa	289	35	20	1	31	203	4
Sonepat	186	173	5	9	0		2
Yamunanagar	42	3	4	1	34		1
TOTAL HARYANA	2313	1455	135	250	217	256	20

Punjab

District	Total Basmati	Pusa Basmati 1121	Pusa 1509	Bas-386	PB -1
Amritsar	425	265	160	1	0
Barnala	10	7	0	0	2
Bhatinda	31	31	0	0	0
Faridkot	80	80	0	0	0
Fatehgarh Sahib	40	30	0	0	9
Fazilka	264	264	0	0	0
Firozpur	130	130	0	0	0
Gurdaspur	140	139	0	0	0
Pathankot	8	8	0	0	0
Hoshiarpur	22	22	0	0	0
Jalandhar	37	36	0	0	0
Kapurthala	27	27	0	0	0
Ludhiana	86	61	11	0	14
Mansa	3	3	0	0	0
Moga	43	42	0	0	1
Mohali	12	12	0	0	0
Muktsar	190	150	0	0	40
Nawanshahar	17	16	1	0	0
Patiala	80	61	7	0	12
Rupnagar	10	10	0	0	0
Sangrur	122	91	0	0	31
Tarantaran	284	264	20	0	0
Total	2059	1751	199	1	109

Uttar Pradesh

District	Total Basmati	Pusa Basmati-1121	Pusa Basmati-1509	Pusa Basmati-1 & 6	Type-3 & Others	Sharbati	Sugandha
Agra	2.9	0.8	1.8	0.2	0.0		6.4
Aligarh	75.7	42.2	21.7	11.8	0.0	8.4	27.9
Auraiya	4.3	2.5	0.5	0.2	1.1	4.8	0.6
Baghpat	10.8	5.2	2.1	3.5	0.0	0.8	2.3
Bareilly	7.7	3.0	2.1	1.2	1.3	135.2	1.6
Bijnore	21.0	3.5	8.3	9.2	0.0	56.0	4.8
Budaun	27.4	4.8	6.1	2.2	14.3	62.0	6.7
Bulandshahr	92.5	54.6	18.8	19.1	0.0	15.3	52.1
Etah+Kasganj	23.2	11.5	10.2	1.5	0.0	2.5	23.4
Farukhabad	7.2	4.4	2.5	0.2	0.0	0.4	6.8
Firozabad	11.5	5.8	4.9	0.7	0.0	0.3	17.1
Etawah	26.6	17.3	8.8	0.5	0.0	0.2	13.5
Gautam Buddha Nagar	59.2	50.0	3.3	5.9	0.0	4.7	2.9
Ghaziabad+Hapur	35.0	15.9	14.4	4.6	0.0	10.1	18.2
Hathras	21.7	11.1	8.1	2.6	0.0	2.1	19.2
Mathura	84.3	68.1	12.9	3.4	0.0	0.9	13.6
Mainpuri	46.1	37.2	8.2	0.7	0.0	0.6	19.7
Meerut	23.6	4.9	11.2	7.4	0.1	2.0	12.0
Moradabad	12.5	3.3	8.3	1.0	0.0	30.9	7.9
J. P. Nagar	13.1	3.0	7.2	2.9	0.0	23.5	8.9
Kannauj	6.3	1.6	4.3	0.4	0.0	0.4	4.3
Muzaffarnagar+Shamli	31.1	8.8	10.5	11.6	0.2	3.6	8.0
Pilibhit	16.1	2.4	13.2	0.5	0.0	16.6	1.4
Rampur	7.1	1.8	4.9	0.5	0.0	71.7	0.8
Saharanpur	57.4	15.3	10.8	30.9	0.4	22.1	10.4
Shahjehanpur	10.6	3.8	3.2	0.8	2.8	28.8	1.4
Sambhal	11.5	3.6	6.6	1.3	0.0	25.4	15.3
Total	746.3	386.5	214.6	124.8	20.4	529.5	307.0

Uttarakhand

District	Total Basmati	Pusa Basmati- 1121	Pusa Basmati- 1509	Pusa Basmati- 1	Type-3 & Others	Sharbati	Sugandha
Dehradun	2.8	0.5	0.2	0.0	2.4	2.6	0.1
Haridwar	6.4	4.1	0.5	2.1	2.3	4.2	0.3
Nainital	1.5	0.7	0.3	0.0	0.9	1.5	0.0
U S Nagar	3.8	3.4	1.5	0.1	0.7	8.6	0.2
Total	14.6	8.6	2.6	2.3	6.3	17.0	0.5

Jammu & Kashmir

District	Pusa Basmati- 1121	Pusa Basmati 1509	Basmati 370/ Ranbir	Sharbati
Jammu	4.3	0.0	86.7	32.3
Kathua	20.6	0.8	7.7	2.6
Samba	0.2	0.3	3.9	1.0
Total	25.1	1.1	98.2	35.9

Himachal Pradesh

District	Pusa Basmati 1121	Pusa Basmati 1509
Kangra*	5.8	3.1
Mandi*		11.6
Total	5.8	14.7

Chapter- 5

Block-wise variety wise details

Block wise and Variety wise acreage under total rice and Basmati + Scented varieties in Haryana (2018)

Sl. No.	District	Block	Pusa Basmati-1121	CSR 30	Pusa Basmati-1509	Pusa Basmati - 1	Punjab Basmati-3	Taraori (HBC-19)	Pusa 1401	Sharbati
1	Kaithal		32600	22350	3780	91				276
		Pundri	719	303	575	35				0
		Seevan	5007	644	523	0				0
		Gulha	4616	984	879	0				0
		Rajond	6797	4597	446	0				0
		Kaithal	7762	2032	465	35				0
		Kalayat	7762	2032	465	35				0
2	Karnal		34935	24746	11225	213				255
		Nissang	8136	3324	0	0				0
		Assandh	2843	2031	0	0				0
		Nilokheri	15023	4358	0	0				0
		Gharunda	1433	7978	11225	0				0
		Indri	4536	0	0	0				0
		Karnal	2964	7055	0	0				0
3	Kurukshetra		10333	12587	3205	2346				138
		KRK	2086	5153	82	0				0
		Babain	86	1369	403	0				0
		Ladwa	0	3247	2481	0				0
		Pehowa	6398	2817	0	0				0
		Sahabad	1764	0	239	0				0
4	Rohtak		30275	57	56	0				276
		Rohtak	0	0	0	0				0
		Lakhanmajra	12615	57	0	0				0
		Sampla	0	0	0	0				0
		Meham	3532	0	0	0				0
		Kalanaur	14128	0	0	0				0
5	Faridabad		9715	0	160	1365				138
		Faridabad	0	0	53	0				0
		Ballabhgarh	0	0	106	0				0
6	Palwal		9715	0	160	1365				138
		Palwal	0	0	70	0				0
		Hodal	0	0	9	0				0
		Hathin	0	0	21	0				0
		Hassanpur	0	0	60	0				0

7	Fatehabad	Hassanpur	18930	998	1682	12310		7877	276
		Tohana	811	404	123	0			0
		Fatehabad	2794	15	648	0			0
		Bhuna	3065	154	98	0			0
		Ratia	11628	69	773	0			0
		Jakhal	631	347	33	0			0
		Bhattukalan	0	8	7	0			0
8	Sirsa		7567	286	3808	6211		35243	1050
		Ellanbad	0	93	821	0			0
		Sirsa	0	100	1620	0			0
		Rania	7567	90	1064	0			0
		Baragua	0	0	0	0			0
		Dabwali	0	0	0	0			0
		Odhan	0	0	0	0			0
		Natusari	0	4	303	0			0
9	Jhajjar		39000	257	1071	0			276
		Jajhhar	22076	145	0	0			0
		Beri	0	0	0	0			0
		Sahlwas	0	0	0	0			0
		Matnhill	0	0	0	0			0
		B/Garh	16925	112	0	0			0
10	Bhiwani		18555	0	0	0			84
		Bhiwani	0	0	0	0			0
		Bhiwani Khera	0	0	0	0			0
		Dadri	0	0	0	0			0
		Dadri II	0	0	0	0			0
11	Yamunana gar		786	390	772	6740			276
		Radore	479	224	538	0			0
		Mustfabad	192	0	17	0			0
		Jagadhari	115	0	214	0			0
		Bilaspur	0	0	0	0			0
		Chachhroli	0	165	3	0			0
		Sadhora	0	0	0	0			0
12	Panipat		46892	7308	3168	1845			277
		Panipat	10042	1838	0	0			0
		Israna	13011	875	0	0			0
		Matloda	12662	2283	3168	0			0
		Samalkha	8150	2313	0	0			0
		Bapoli	3027	0	0	0			0
13	Jind		59974	5891	2323	7434			276

		Narwana	8944	916	1179	0			0
		Jind	8397	869	118	0			0
		Julana	5664	0	0	0			0
		safidon	0	1263	246	0			0
		Pilukhera	18484	0	115	0			0
		Alewa	8546	2843	664	0			0
		Uchana	9938	0	0	0			0
14	Ambala		4960	8599	135	247			84
		Naraingarh	0	0	78	0			0
		Ambala-I	4800	5733	0	0			0
		Ambala-II	53	0	0	0			0
		Baraar	107	0	52	0			0
		Saha	0	2866	0	0			0
		Sahzadpur	0	0	5	0			0
15	Sonepat		58875	2807	1517	0			505
		Gohana	9340	252	0	0			0
		Mundana	1837	0	0	0			0
		Kharkhoda	3598	579	0	0			0
		Sonipat	25877	264	0	0			0
		Kathura	0	327	0	0			0
		GANOUR	18221	1385	0	0			0
		Rai	0	0	0	0			0
16	Hisar	Rai	35860	1035	533	829			72
		Hisar 1	0	0	0	0			0
		Bas	32600	690	125	0			0
		Hansi	0	0	0	0			0
		Narnaud	0	115	31	0			0
		Agroha	0	0	0	0			0
		Uklana	3260	230	251	0			0
		Barwala	0	0	125	0			0
17	Mewat		6534	0	0	0			302
		Nuh	0	0	0	0			0
		Punana	0	0	0	0			0
		Nagina	0	0	0	0			0
18	Rewari		1045	0	0	0			307
19	Gurgaon		1938	0	0	190			265
20	Panchkula		0	0	0	0			276
	Total		428490	87311	33594	41186		43119	5819

Block wise and Variety wise acreage under total rice and Basmati + Scented varieties in Punjab (2018)

Sl. No.	District	Block	Total Basmati	Pusa-1121	Pusa-1509	Basmati-386/ CSR 30	PB-1	Sharbati
1	AMRITSAR		105221	72278	32591	352		367
		Ajnala	25154	10542	1867	106		
		Chogawan	20955	8062	1809	212		
		Harsha Chhina	15760	14263	3130			
		Jandiala Guru	2413	3721	7119			
		Majitha	8532	14389	9125			
		Rayya	2906	3109	1901			
		Tarsikka	4900	989	1183			
		Verka	12103	11129	3154	33		
		Attari	12497	6076	3304			
2	BARNALA		2306	1809			497	
		Barnala	1032	439				
		Sehna	746	685				
		Mehal Kalan	528	685				
3	BATHINDA		9117	9117				
		Rampura Phul	2003	1531				
		Nathana	2326	2906				
		Bathinda	1550	1647				
		Maur	1074	1318				
		Sangat	848	552				
		Talwandi	485	436				
		Sabo	468	242				
		Bhagta Bhai Ka	363	484				
4	FARIDKOT		19699	19699				
		Faridkot	9158	9180				
		Kotkapura	10541	10519				
5	FATEHGARH SAHIB		19699	7673			1938	
		Khera	3752	1381				
		Bassipathana	2181	1535				
		Khamano	3377	460				
		Sirhind	4831	2149				
		Amlah / Gobindgarh	5558	2149				
6	FAZILKA		66145	66145				
		Fazilka	34300	28709				
		Abohar	5380	1378				
		Jalalabad	23851	35369				
		KhuyianSarvar	2615	689				
7	FEROZEPUR		36245	36245				
		Ferozepur	4881	4461				
		Ghall Khurd	2779	5390				
		Guru Har Sahai	19081	14870				
		Makhu	2366	2788				
		Mamdot	4703	5948				
		Zira	2437	2788				
8	GURDASPUR		41174	41072	102			3595
		Gurdaspur	3411	5305	0			0
		Dhariwal	3953	4278				0
		Khanuwan	2757	4022				0
		Kalanaur	4289	4107				0
		Dinanagar	3589	3080				0
		Batala	3252	2995				0
		ShHargobindpur	3682	2909				0
		FatehgarhChurian	3215	3679				0
		Quadian	4028	2995				0
		Dera Baba Nanak	4794	3765				0
		Dorangla	4205	3936				0
9	HOSHIARPUR		5921	5921				
		Hoshiarpur-I	381	0				
		Hoshiarpur-II	267	0				
		Bhunga	373	0				
		Tanda	1393	1719				
		Dasuya	178	1528				
		Mukerian	1644	1719				
		Hajipur	162	764				

		Talwara	243	0			
		Mahilpur	478	0			
		Garhshankar	802	191			
10	JALANDHAR		10413	9657	756		
		Jalandhar East	854	1518	0		
		Jalandhar West	650	1242	0		
		Adampur	1271	828	0		
		Bhogpur	1252	966	216		
		Philour	1980	828	0		
		Rurka Kalan	505	759	0		
		Noor Mahal	747	1173	0		
		Nakodar	1126	1242	0		
		Shahkot	844	552	0		
		Lohian	1184	552	540		
11	KAPURTHALA		7744	7744			
		Kapurthala	988	1452			
		Sultanpur Lodhi	444	1646			
		Phagwara	1505	2130			
		Dhilwan	2267	1646			
		Nadala	2539	871			
12	LUDHIANA		22780	17392	2217		3172
		Ludhiana-I	1593	1070	0		
		Ludhiana-II	1770	1070	0		
		Machiwara	1829	1070	599		
		Samrala	1676	535	1561		
		Khanna	1534	2676	0		
		Doraha	2184	803	0		
		Dehlon	3187	803	0		
		Pakhowal	1936	1338	0		
		Sudhar	1617	1338	57		
		Jagraon	2254	1338	0		
		Sidhwan Bet	1818	4013	0		
		Rai Kot	1381	1338	0		
13	MANSA		850	850			
		Mansa	179	163			
		Bhikhi	179	327			
		Bhudhalada	281	294			
		Jhunir	196	33			
		sardulgarh	17	33			
14	MOGA		17160	17040			120
		Moga-I	2359	4492			
		Moga-II	938	1549			
		Bagha Purana	2170	6196			
		Nihal Singh wala	7405	2479			
		Kot Ise khan	4288	2324			
15	MOHALI		3851	3851			
		Kharar	1612	1091			
		Majri	1791	1284			
		Derabassi	448	1476			
16	MUKATSAR		50723	42407			8317
		Muktsar	10289	13304			
		Malout	14315	10394			
		Giddarbaha	10604	10394			
		Lambi	15515	8315			
17	NAWANSHAHR		4862	4630	232		
		Nawanshahr	635	1158	116		
		Banga	1446	1158	116		
		Aur	2016	579	0		
		Balachaur	541	1158	0		
		Saroya	224	579	0		
18	PATHANKOT		2750	2750			1938
		Pathankot	941	724			
		N.J. Singh	822	1302			
		Bamial	365	362			
		Dhar	0	0			
		Kalan	320	0			
		Sujanpur	301	362			

19	PATIALA		19734	15770	1390				2575	
		Patiala	2196	2017	0					
		Nabha	3830	2567	0					
		Saman	1391	1284	0					
		Patran	3024	1009	528					
		Bhunerheri	121	3301	0					
		Sanour	3377	2567	306					
		Rajpura	3035	1284	556					
		Ghanour	2759	1742	0					
20	RUPNAGAR		2887	2874	13					
		Rupnagar	477	1495	0					
		Chamkaur Sahib	1295	460	0					
		NurpurBedi	189	230	0					
		Morinda	764	575	13					
		Anandpur Sahib	162	115	0					
21	SANGRUR		31859	25440					6419	
		Sangrur	2372	3117						
		Bhawanigarh	2330	2715						
		Ahmedgarh	1027	2715						
		Malerkotla	858	2514						
		Dhuri	1801	2011						
		Sherpur	1991	2715						
		Sunam	1843	3419						
		Lehragaga	9850	3017						
		Andana	9787	3218						
22	TARN TARAN		75580	71792	3787					
		TarnTaran	9729	9415	169					
		Chohla Sahib	3780	11769	0					
		NausheraPannuan	13500	10828	1162					
		Gandiwind	8117	7650	1222					
		Khadaur Sahib	4478	5296	1234					
		Patti	12020	8827	0					
		Valtoha	11963	8827	0					
		Bhikhiwind	11992	9180	0					
	Total		546645	482156	41087			352	23050	5900

Block wise and Variety wise acreage under total rice and Basmati + Scented varieties in U.P (2018)

S. No.	District	Block	Total Rice	Pusa-1121	Pusa Basmati-1	Typ e-3	HBC -19	Basmat i- 370	Pusa-1509	CSR -30	Sugandha 2,3&5	Shar bati
1	Aligarh		58300	16310	4326				4684		9060	2475
		Dhanipur	6200	2911	306				287		0	54
		Lodha	3745	1067	204				242			98
		Jawan	7551	2428	377				399			236
		Akrabad	6228	2524	275				365			59
		Atroli	4816	891	182				388			380
		Bijoli	4209	865	115				506			297
		Gangiri	4065	663	102				388			289
		Khair	4836	1098	1365				236			87
		Chandous	3540	865	430				354			179
		Tappal	4577	1401	634				478			134
		Iglas	4284	698	84				579			355
		Gonda	4250	900	253				461			308
2	Hathras		13561	3794	788				2413		5898	696
		Hasain	3949	1033	236				563		0	205
		Sikandrara oo	4505	1520	241				469		0	275
		Sapau	2905	681	153				646		0	81
		Mursan	549	194	59				151		0	43
		Hathras	648	149	44				198		0	22

		Sasani	664	167	39			182		0	32
		Sadabad	342	50	15			203		0	38
3	Etah +Kasganj		33150	4707	483			3135		7413	882
		Sheetalpur	3646	521	55			380		0	90
		Sakeet	6288	880	80			375		0	69
		Nindholikala	2554	413	35			155		0	42
		Marehara	1592	349	10			198		0	42
		Aliganj	554	63	20			128		0	21
		Jaithra	277	36	15			59		0	16
		Jalesar	2407	349	35			294		0	37
		Awagarh	2375	472	40			209		0	37
		Soron	1674	195	15			155		0	42
		Kasganj	1625	245	15			187		0	32
		Tilpura	2663	358	55			230		0	90
		Ganjjudwara	1831	100	20			209		0	69
		Patiyali	2549	413	60			225		0	164
		Amapur	1690	209	20			209		0	100
		Sawat	1424	104	10			123		0	32
4	G.B. Nagar		26829	17105	1762	10		783		853	1376
		Bisrakh	3551	2309	342	0		57		0	152
		Dadri	6330	3302	252	0		438		0	719
		Dankour	7298	4858	550	0		98		0	247
		Jebar	9650	6636	619	0		191		0	257
5	Baghpat		4921	1828	1172	30		536		850	235
		Chhaproli	702	683	134	0		68		0	23
		Barot	683	730	124	0		89		0	48
		Bagpat	860	915	183	0		84		0	37
		Kirana	968	799	297	0		110		0	42
		Khekhda	973	1089	252	0		100		0	48
		Binoli	737	706	183	0		84		0	37
6	Bulandshahr		12524	19262	5731	20		4652		14776	4484
		Sikandrabad	1376	3004	863	0		304		0	249
		Gulavati	769	1101	783	0		237		0	409
		Lakhawati	1100	2094	980	0		292		0	228
		Bulandshahar	853	1834	282	0		232		0	260
		Shikarpur	870	1333	188	0		226		0	223
		B.B. Nagar	335	223	76	0		215		0	37
		Sayana	358	265	89	0		232		0	164
		Jahangirabad	628	506	286	0		320		0	101
		Khurja	990	1830	546	0		326		0	334
		Arnia	770	1217	237	0		298		0	653
		Pahasu	1264	1987	470	0		502		0	541
		Unchagaon	323	344	76	0		155		0	101
		Danpur	867	1258	210	0		453		0	409
		Dibai	734	915	143	0		265		0	334
		Anoopshahar	974	952	277	0		447		0	334
		Agota	312	399	224	0		149		0	106
7	Ghaziabad + Hapur		26966	4727	1400			3194		4875	3479
		Rajapura	3324	1211	205			52		0	355
		Loni	1291	393	90			76		0	90

		Muradnagar	2397	774	145			128		0	187
		Bhojpur	2093	275	70			169		0	175
		Hapur	5254	806	95			1309		0	54
		Dholana	4831	749	215			262		0	1715
		Garh	4979	320	535			483		0	788
		Simbhawali	2797	198	45			716		0	114
8	Meerut		16280	2209	2325	29		2649		3193	625
		Hastinapur	1937	65	496	0		95		0	270
		Jani	1084	243	190	0		161		0	11
		Mavana	1777	325	164	0		306		0	69
		Parichshitgarh	2162	126	299	0		273		0	122
		Meerut	725	152	76	0		106		0	11
		Kharkhonda	1257	156	44	0		412		0	27
		Machhara	1405	135	83	0		395		0	27
		Rohta	1007	187	190	0		217		0	37
		Sardana	1276	122	272	0		122		0	16
		Rajpura	1123	169	63	0		239		0	11
		Dorala	1225	256	239	0		139		0	11
		Saroorpur	1302	273	207	0		184		0	16
9	Muzzfarnagar + Shamili		29785	4058	3881	107		2541		1990	1264
		M. Nagar	2170	189	200	0		300		0	22
		Bagra	1705	171	259	0		184		0	70
		Sardhawan	2402	285	458	0		226		0	76
		Purkaji	3598	408	511	0		132		0	437
		Jansath	1804	189	361	0		179		0	76
		Khatoli	2545	285	288	0		205		0	49
		Borda	1527	215	122	0		132		0	49
		Shahpur	2009	373	201	0		116		0	38
		Udana	1777	250	217	0		153		0	22
		Kandla	1759	189	229	0		210		0	59
		Shamli	1982	400	278	0		184		0	43
		Udon	2045	400	229	0		121		0	65
		Kerana	1830	163	308	0		205		0	167
		Thanabhawan	2634	540	220	0		195		0	92
10	Saharanpur		50504	6489	11414	206		3368		2879	7455
		Baliakheri	5284	647	1507	18		264		0	824
		Punwarka	5932	597	1436	15		231		0	835
		Nakur	6016	798	1783	15		341		0	751
		Sarsawan	5278	831	2001	0		264		0	887
		Gangoh	5751	701	1854	23		132		0	541
		Rampur Maniharan	5549	656	965	45		341		0	1061
		Nanota	6172	626	870	45		637		0	688
		Devband	2273	376	162	0		379		0	58
		Nagal	3455	585	542	30		379		0	625
		Sadholikalan	2325	326	128	0		203		0	646
		Muzzafarabad	2469	347	166	15		198		0	541
11	Moradabad		66503	1065	296			2315		2375	9299
		Billari	3437	182	64			491		0	1313
		Moradabad	4761	215	39			420		0	1340

		Chhajlet	3043	171	39			388		0	189
		Mudapanday	7924	72	31			153		0	1351
		Kundarki	8159	215	44			278		0	1567
		Thakurdwar	15300	108	44			235		0	1097
		BhagatpurTandan	12017	61	20			164		0	1097
		Dillari	11864	44	15			186		0	1345
12	Bijnore		43714	1444	3181			2495		1340	18072
		Mohamadpur	3001	67	212			237		0	1194
		DevmalHaladore	3208	98	247			121		0	1515
		Nurpur	3508	103	278			133		0	1729
		Jalilpur	4309	58	288			225		0	1772
		Dhampur	2679	98	187			162		0	1204
		Chuhara	2922	76	200			133		0	1558
		Mehtore	2829	80	197			121		0	1483
		Afjalgarh	4266	139	358			589		0	1761
		Kotwali	6831	255	583			393		0	1697
		Najibabad	7224	308	591			248		0	2719
		Keeratpur	2937	161	40			133		0	1440
13	Rampur		112403	610	140			1384		192	23972
		Subar	20199	86	35			182		0	4332
		Vilaspur	20099	131	40			252		0	3313
		Shayatnagar	17765	50	10			229		0	2326
		Chabraoa	16034	77	15			252		0	3629
		Shahabad	17313	140	15			217		0	4469
		Milakh	20994	127	25			252		0	5902
14	J.P. Nagar		15974	1157	955			1998		2757	7233
		Amroha	2728	184	108			366		0	626
		Joya	2519	160	64			561		0	1086
		Dhanora	2870	247	310			361		0	1204
		Gajrola	2924	271	138			273		0	1343
		Hasanpur	2314	107	182			221		0	1279
		Gangeshwani	2619	189	153			216		0	1696
15	Pilibhit		152499	809	158			3396		377	5406
		Nurori	15849	113	13			235		0	579
		Lalorikhera	8834	106	33			203		0	782
		Amaria	22349	113	13			395		0	305
		Badkhera	12205	77	40			416		0	541
		Beejalpur	13633	56	33			395		0	833
		Bilsanda	18298	127	13			587		0	941
		Puranpur	61330	218	13			1164		0	1425
16	Agra		3956	313	72			483		2182	
		Achhnera	2315	121	32			228		0	
		Atmadpur	312	46	18			48		0	

		Fetehpur Sikri	1330	146	23			207		0	
17	Bareilly		150083	1201	428	666		659		495	46375
		Khyora	5186	83	27	0		10		0	1670
		Bitlichainpur	11742	55	27	0		57		0	2083
		Bhojipur	9082	41	9	0		46		0	2920
		Fatehganj	5913	23	14	0		88		0	769
		Meerganj	6501	78	14	0		46		0	2099
		Fareedpur	11327	55	50	0		67		0	2268
		Bhutha	12316	74	41	0		57		0	2454
		Nababganj	13799	69	32	0		62		0	4373
		Bhairpura	9676	161	32	0		57		0	4086
		Bahedi	13957	64	36	0		26		0	4219
		Damekhoda	10635	87	38	0		36		0	3662
		SeeshGarh	9438	106	50	0		26		0	4086
		Alampur	12711	143	23	0		21		0	4468
		Jafrabad	9142	101	14	0		57		0	4192
		Majhagwa	8657	60	23	0		3		0	3026
18	Badaun		47800	1880	739	929		2070		1970	20754
		Badaun	2077	61	39	0		36		0	936
		Asabpur	1868	182	10	0		57		0	1040
		Islamnagar Bisoli	2139	61	39	0		191		0	1302
		Bajirganj	1721	51	25	0		114		0	894
		Dangawan	1603	47	25	0		88		0	1030
		Sahswan	3336	61	25	0		160		0	1615
		Auiyapur	2771	42	25	0		114		0	1553
		Salarpur	3623	145	30	0		263		0	1302
		Jagat	3211	89	34	0		160		0	1610
		Ujhiani	2873	173	54	0		181		0	1344
		Kodarchok	3110	173	44	0		145		0	1302
		Samred	5655	317	108	0		114		0	1730
		Dataganj	5368	145	89	0		263		0	1678
		Mayaoo	5108	173	54	0		88		0	2075
		Usava	3336	163	138	0		98		0	1344
19	Kannauj		12322	621	158			1408		1424	137
		Chhibramu	1934	53	13			87		0	11
		Talgram	1532	86	13			154		0	32
		Sorikh	2143	38	57			220		0	16
		Haseran	2257	186	19			363		0	11
		Jalalabad	336	72	6			56		0	16
		Kakor	1728	62	25			179		0	32
		Umardha	2030	81	13			251		0	11
		Jugrajpur	362	43	13			97		0	11
20	Firozabad		12524	2181	236			1306		5323	124
		Tundla	220	42	10			87		0	10
		Narkhi	358	42	10			67		0	10
		Shikohoba	2046	333	15			189		0	21
		Madanpur	2046	295	15			113		0	26
		Araon	1348	174	50			292		0	16

		Jasrana	4719	1055	70			364		0	26
		Hathbant	150	19	5			46		0	16
		Eka	1637	220	60			148		0	0
21	Mathura		35717	22479	1044			3434		3424	276
		Mathura	3988	2998	39			331		0	43
		Govardhan	4472	3123	212			226		0	12
		Nand Gaon	4979	3123	94			473		0	24
		Chhata	7870	4669	305			788		0	12
		Chomuha	3824	2675	123			457		0	6
		Farah	1470	462	25			299		0	49
		Baldev	981	345	34			142		0	49
		Raya	1049	273	39			205		0	18
		Manth	3007	1573	84			368		0	12
		Navjhil	4075	3240	89			147		0	49
22	Mainpuri		48042	13855	201			2761		5970	179
		Kurawali	2373	615	5			228		0	6
		Ghiroor	6899	1676	15			409		0	24
		Sultanganj	3344	1251	40			449		0	36
		Bebar	3036	683	20			286		0	42
		Kishani	8179	1302	40			525		0	24
		Mainpuri	11168	3571	60			403		0	12
		Jageer	11351	4169	10			286		0	24
		KarahalBar nahal	1691	589	10			175		0	12
23	Etawah		40602	5987	158			2565		4585	62
		Saifai	7537	846	14			248		0	11
		Jaswantnag ar	5025	534	41			592		0	23
		Badpura	1037	279	34			142		0	6
		Basrehar	6712	960	27			349		0	0
		Bhartana	9034	903	14			354		0	0
		Takha	6950	1466	14			546		0	11
		Maheva	4189	984	7			319		0	6
		Chakarnag ar	116	14	7			15		0	6
24	Farrukhabad		11322	1687	59			855		2385	137
		Badpura	1270	14	0			36		0	16
		Rajepur	1329	37	11			57		0	37
		Kamalganj	1806	32	5			130		0	42
		Mohamdab ad	1591	28	21			224		0	5
		Nababganj	1875	23	16			203		0	32
		Shamshaba d	1656	14	0			193		0	0
		Kayamganj	1795	1540	5			11		0	5
25	Auriya		44945	1009	49	657		165		190	1754
		Auriya	6005	135	0	0		16		0	169
		Ajitmal	6103	77	11	0		21		0	394
		Bhagwant nagar	7666	162	22	0		53		0	527
		Bidhuna	7884	189	0	0		27		0	302
		Achalda	4868	77	5	0		43		0	102
		Sahar	5699	284	0	0		5		0	92
		Aerwakatra	6720	86	11	0		0		0	169
26	Shahjahanpur		19704 9	1318	266	168 0		815		426	8688
		Banda	20388	81	25	0		56		0	766

		Khutar	10910	77	0	0			51		0	665
		Puvahya	17151	150	25	0			41		0	874
		Sindholi	18466	81	39	0			36		0	874
		Khudaganj	14824	65	10	0			56		0	670
		Jaitipur	10647	69	0	0			41		0	852
		Tilhar	9898	28	10	0			36		0	306
		Nigohi	11496	122	10	0			36		0	381
		Kanth	11243	45	5	0			41		0	32
		Dadrol	11142	53	20	0			56		0	520
		Bhaavalkhe da	10459	53	15	0			87		0	488
		Clan	13307	199	20	0			108		0	734
		Mirjapur	9898	114	30	0			46		0	456
		Jalalabad	11688	93	30	0			97		0	766
		Madanpur	1553	89	30	0			26		0	306
			2									
27	Sambhal		28458	1415	394	20			1737		4394	8533
		Junamai	2184	167	34	0			88		0	832
		Gunnour	1960	113	20	0			88		0	784
		Rajpura	1788	149	30	0			99		0	726
		Baniakhera	5213	167	64	0			244		0	1606
		Bahjoi	3108	140	39	0			328		0	620
		Sambhal	5615	257	79	0			328		0	1654
		Pawansa	2316	104	30	0			192		0	769
		Asmoli	6275	320	99	0			369		0	1542
	Total		13361			1271						1739
			80	139522	41817	6			57797		91595	71

Block wise and Variety wise acreage under total rice and Basmati + Scented varieties in U.K (2018)

Sl. No.	District	Block	Total Rice	Basmati varieties							Long Grain Non-Basmati	
				Pusa Basmati-1121	Pusa Basmati-1	Type-3	HBC-19	CSR-30	Basmati-370	Pusa Basmati-1509		Sharbati
1	Haridwar		14227	1476	2113	2317					528	4236
		Bahadurabad	3621	436	447	708					106	1028
		Narsan	1856	183	310	0					86	337
		Rurki	2470	267	280	322					67	691
		Lakshar	1754	276	349	772					67	490
		Khanpur	2266	112	349	129					106	479
		Bhagwanpur	2260	201	378	386					96	1211
2	Dehradun		7414	210		2413					208	2598
		Doibala	1782	81		542					87	767
		Raypur	515	0		185					52	69
		Sahjpur	1754	56		487					35	757
		Vikash Nagar	1818	64		747					35	746

		Kalasi	825	9		226			0	164
		Chackrata	720	0		226			0	95
3	U S Nagar		99491	1422	137	749			1538	8647
		Khatima Sitar	15421	88	0	0			112	679
		Ganj	17227	55	0	115			123	539
		Bajpur	14886	183	0	0			332	1188
		Rudrapur	14263	374	30	138			255	1545
		Jaspur	12781	164	54	288			271	1757
		Kashipur	11230	252	0	115			317	1272
		Gadarpur	13682	307	54	92			129	1666
4	Nainital		8516	276		869			309	1471
		Betalghat	356	0		0			0	121
		Bhimal	304	0		0			0	72
		Dhari	40	0		0			0	0
		Ramgarh	198	0		0			0	0
		Okhalgola	356	0		0			0	0
		Haldwani	2706	106		446			137	579
		Ram Nagar	244 5	142		4 23			172	699
		Kotabag	2113	28		0			0	0
	Total		129648	3384	2250	6348			2583	16952

Block wise and Variety wise acreage under total rice and Basmati + Scented varieties in J.K (2018)

Sl. No.	District	Block	Total Rice	Pusa Basmati-1121	Basmati-370	Sharbati
1	Jammu		136609	1385		9129
		Akhnoor	0	0		3060
		Balwal	0	0		153
		Bishnah	0	1340		1938
		Marh	0	0		255
		R.S. Pura	0	45		2856
		Satwari	0	0		867
2	Kathua		41278	6272		745
		Kathua	0	18059		230
		Hiranagar	0	15157		357
		Barnoti	0	8062		158
3	Samba		136609	582		275
		Samba & Rehian	0	340		68
		Vijaypur & Ramgarh	0	243		104
		Purumandal & Yakh	0	0		0
		Gaghwal	0	0		104
	Total		136609	8239		10149

Methodology

- We have done the complete study based on field survey
- We have deputed the field teams in targeted 7 states which conducted the farmer interviews in around 79 districts out of total 81 districts
- We have done questionnaires'-based farmer surveys and taken farmers pictures along with actual survey day newspapers. We geo-tagged farmers during the survey too in ours picture.
- To vet the complete study, we have also taken assistance from satellite images and tele-calling, so that complete perspective can be taken into considerations while arriving the results of the study
- To further validate the results, we have also taken the last year's figures from the previous reports, so that survey results error has to be minimized and actual figures can be achieved in the study

Way Forward

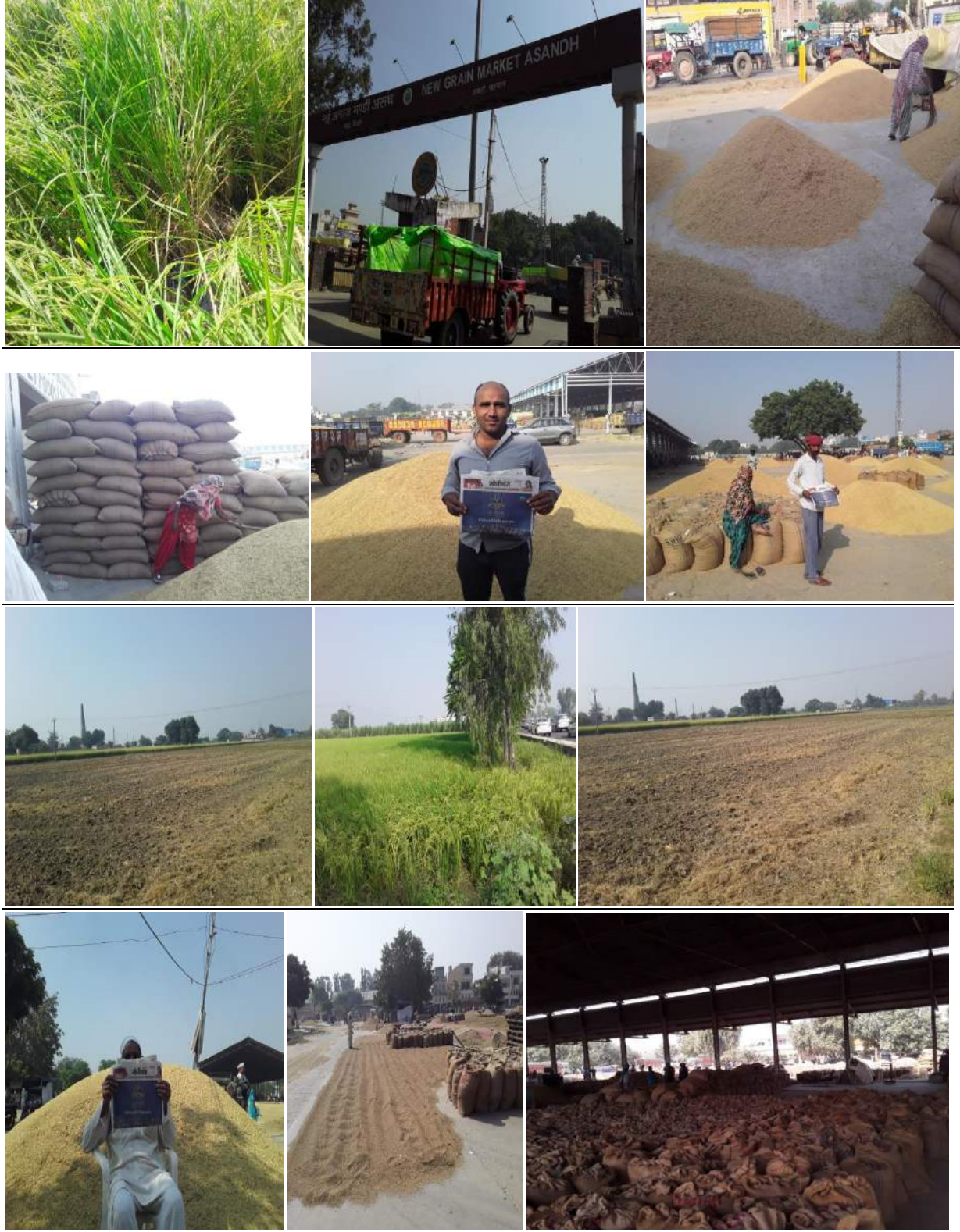
- Survey teams will be continuously in the field throughout the survey and report on crop progress to APEDA, so that subsequent reports will be presented in the more meaningful& timely manner
- Next report will focus on Mandi arrival pace / crop production / crop cutting experiments / price trends / any infestation or losses if any
- Any changes as reported from the field on current thoughts will also be incorporated
- Next report will be presented during Nov, 2018,

Data Source

- All figures based on farmer interview and feedback for current year
- Last year dataset from previously submitted reports
- Paddy procurement prices taken from independent price pooling exercise
- Monsoon data was collected from IMD & other meteorological departments
- Satellite imagery from NRSC

PICTURES FROM FIELD SURVEY









**Basmati Export Development Foundation
APEDA, New Delhi**

**Prepared by
Geotrans Technologies Pvt. Ltd.**