

MSME

MICRO, SMALL & MEDIUM ENTERPRISES
सूक्ष्म, लघु एवं मध्यम उद्यम



Financial Assistance for using Global Standards in BARCODING.

Delivering solutions that help you **stay ahead.**



Administered by:
Development Commissioner (MSME)
Ministry of Micro, Small & Medium Enterprises
Government of India
New Delhi

GS1 BARCODES - THE GLOBAL LANGUAGE OF BUSINESS

Financial Assistance Scheme for using Global Standards in barcoding

The Ministry of Micro, Small & Medium Enterprises (MSME), Government of India recognizes the contribution of the micro and small scale industries in the growth of Indian economy, export promotion and employment generation. To make them compliant with International best practices which use GS1 standards in barcoding, Ministry of MSME has provided a financial assistance scheme. Under the scheme Ministry of MSME will provide for reimbursement of 75% of registration fees (one time) and 75% of annual renewal fees (for first three years) for using GS1 standards in barcoding.

What is barcoding?

Barcodes are the series of black lines and white spaces printed on product packages or attached as tags which you would have noticed on consumer products. Information on a product or a consignment like its item code or serial number, expiry date, consignor/consignee etc. can be represented through such barcodes. When these barcodes are scanned using a scanner, it enables instantaneous data capture with 100% accuracy and at great speeds.



Why do you need barcoding?

Barcoding can have a significant impact on the success of your organisation. Timely and accurate capture of product information and its communication electronically across the Supply Chain ahead of physical product flow is critical to lowering inventory costs, in accurate sales forecasting & dynamic production scheduling and in product track and trace.

Barcoding not only facilitates the exchange of information between buyers and sellers, but also provides the potential for better visibility and sharing of information across an entire Supply Chain.

Other benefits:

- Automated data capture with 100% accuracy
- Real time stock management of raw materials and finished goods
- Fast and error free data recording on product/consignment movement
- Easy integration with existing software, if any
- In compliance with growing requirements of leading national markets
- In line with requirements of international retailers
- Also gives international look and feel

Why are GS1 Standards required?

GS1 Standards provide the means by which a common language is used to accurately and speedily communicate trading information across the supply chain to any industry in any part of the world.

In fact, GS1 Standards go further by enabling identification not only of traded goods but also of companies, locations, services, assets, logistics units and customers.

What's more, the numbers issued by GS1 are completely unique, so no product can be confused with another. And the system is international so this uniqueness applies around the world.

GS1 Standards can be used by all industries and in all parts of the supply chain, from supply of raw materials through manufacturing, warehousing and distribution to an end point.

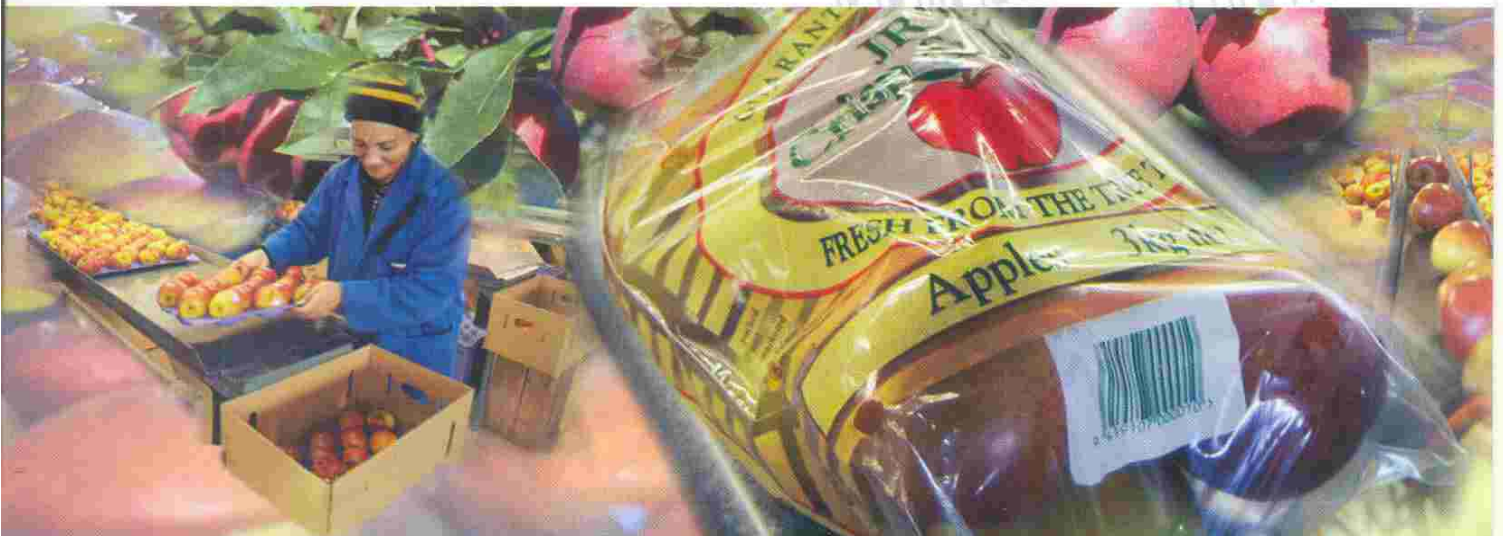
GS1 Standards offer benefits to all organizations by reducing costs, saving time and increasing accuracy and efficiency. It promotes automation, increases control and enables goods to be tracked and traced.

It also provides:

- A global standard for the unambiguous physical identification of products, consignments, locations etc.
- A global standard for the representation of supplementary information (such as batch number, date, measurements etc.) along with a product identification code.
- Standardized business messages for Electronic Data Interchange and Electronic Commerce for sharing information between supply chain trading partners.

GS1 barcodes are used in over 140 countries by more than 1 million companies across 24 industry sectors. They are de-facto global standards in Retail.

Worldwide over 5 billion GS1 barcodes get scanned at Point-of-Sale counters each day.



Financial Assistance just a few steps away...

It's simple! This scheme makes it highly affordable for Micro and Small units to adopt GS1 global standards in barcoding. Units adopting GS1 standards are eligible for reimbursement of 75% of Registration Fees paid towards the allocation of GS1 company prefix (that will be used for the generation of product codes for your different product variants/types).

And what's more.....75% of the Annual Renewal Fees will also be reimbursed not just for the **FIRST year but for THREE years!!!**

Procedure for availing of Financial Assistance:

- Fill up the GS1 registration form (enclosed) or download from www.gs1india.org.
- Send this form along with the requisite payment with a copy of SSI Registration Certificate to GS1 India.
- On receipt of the GS1 company prefix number from GS1 India, apply with necessary documents to Ministry of MSME for reimbursement of Registration Fees and Annual Fees.

After approval, reimbursement Cheque/DD will reach you directly from Min. of MSME.

RUSH! Scheme is available for limited period only on first come first serve basis.

How to implement GS1 barcodes on your products

After obtaining the GS1 company prefix provided by GS1 India on registration, just approach your printer to incorporate the generated GS1 barcode numbers on your product packaging through a one time artwork change or generation of a barcoded sticker/label for each product. GS1 India will provide the technical specifications for generation of GS1 barcodes.

With your registration, you join a global community of over 1 million companies across 140 countries and get yourself global exposure through GS1's GEPIR service.



CONTACT DETAILS



Nearest, Director, MSME-DI's (formerly SISI's)

or

Dy. Director (*Marketing Assistance*)

O/O Development Commissioner (MSME), Ministry of Micro, Small & Medium Enterprises
Nirman Bhawan, New Delhi Ph: 011-23062992, Fax: 23061430 E-mail: adatta@nic.in
Website: www.dcmsme.gov.in, www.smallindustryindia.com, www.laghu-udyog.com

or

GS1 India (Under Ministry of Commerce, Govt. of India)
330, 2nd Floor, "C" Wing August Kranti Bhawan Bhikaji Cama Place, New Delhi
Ph. 011-26168 720/721/725 Fax: 011-26168730
E-mail: info@gs1india.org www.gs1india.org